



| Yanwath | Penrith | CA10 2LF

Guide Price £300,000



david britton
ESTATES

Key features

- 3 bedroom traditional cottage
- In desirable village location
- Sun room, dining kitchen and lounge
- Ground floor bedroom, WC and shower room
- 2 First floor bedrooms and family bathroom
- Generous plot with garden room to the rear
- Beautiful gardens to the front and side
- No onward chain
- Garage and ample off road parking
- Close to Ullswater and Pooley Bridge

Description

This attractive cottage sits on the edge of the Lake District National Park, close to Ullswater, in a generous plot with pretty cottage style gardens, ample parking, garage and even a studio/garden room to the rear. Beautifully presented throughout, this semi-detached bedroom cottages has charm and character and generous living accommodation with three bedrooms, one on the ground floor, sunroom, dining kitchen, lounge, family bathroom and a ground floor bathroom.

Located in the desirable village of Yanwath, on the edge of the Lake District National Park, only 3.5 miles from Ullswater and Pooley Bridge. The nearby A6 offers easy access to the market town of Penrith, with major amenities, shops, schools and national transport links via the M6 and West Coast Main Line close by.

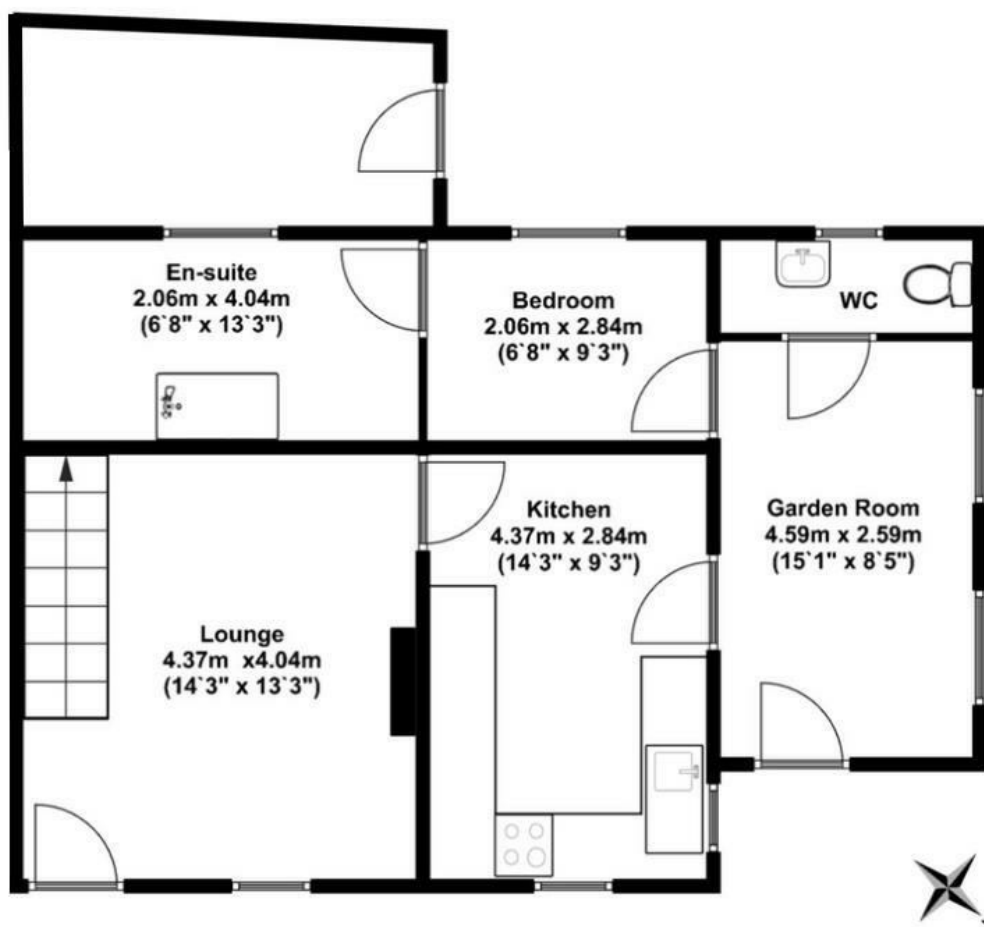
****Viewing strictly by appointment only****

Directions





Floor plans



Energy Efficiency Rating		
	Current	Potential
<i>Very energy efficient - lower running costs</i>		
(92 plus) A		
(81-91) B		
(69-80) C		
(55-68) D		
(39-54) E		
(21-38) F		
(1-20) G		
<i>Not energy efficient - higher running costs</i>		
England & Wales	EU Directive 2002/91/EC	



Unit 3 Mason Court Gillan Way, Penrith 40 Business Park
 Penrith
 Cumbria
 CA11 9GR
 01768881111
 Sales@brittonestates.co.uk
 www.brittonestates.co.uk