



Stoneknowe | Scaleby | Carlisle | CA6 4LS

Asking Price £495,000



david britton
ESTATES

Key features

- Detached 3/4/ bedroom barn conversion
- Parking for several vehicles
- Double garage
- entrance hallway
- inner hallway
- WC
- Utility
- dining room
- kitchen diner
- living room

Description

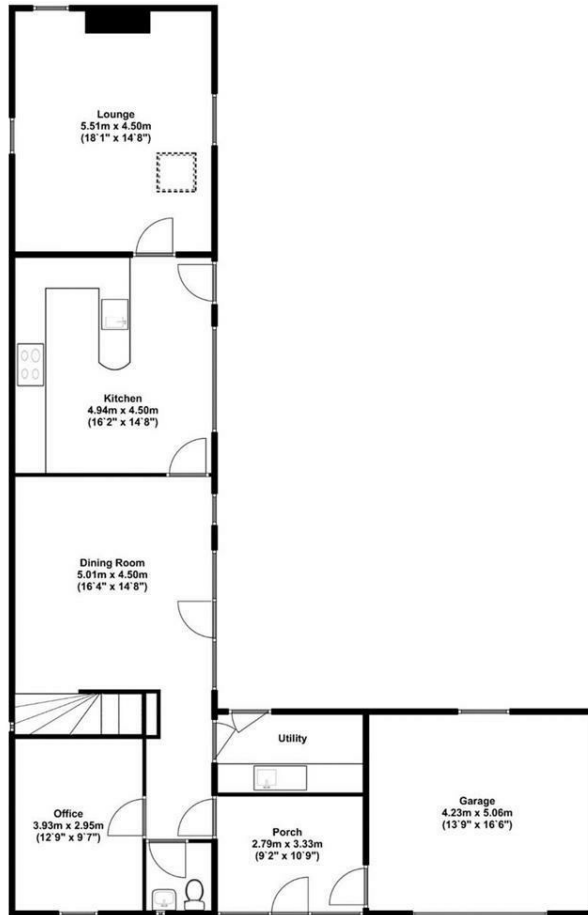
Near the extremely pretty hamlet of Scaleby just outside of Carlisle is this stunning 3/4 bedroom detached barn conversion, beautifully presented throughout, with no expense spared on the finish, With ample parking for up to 3 vehicles to the front and an integral double garage and to the rear there is a huge garden area,



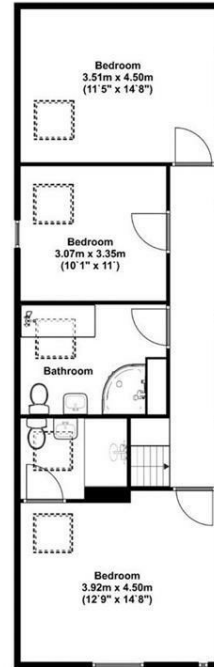
Directions



Floor plans



Ground Floor
Approx 106.00 Sq meters (1141.00 Sq feet).



First Floor
Approx 68.00 Sq meters (732.00 Sq feet).

Energy Efficiency Rating		
	Current	Potential
Very energy efficient - lower running costs		
(92 plus) A		
(81-91) B		
(69-80) C	71	75
(55-68) D		
(39-54) E		
(21-38) F		
(1-20) G		
Not energy efficient - higher running costs		
England & Wales	EU Directive 2002/91/EC	



Unit 3 Mason Court Gillan Way, Penrith 40 Business Park
 Penrith
 Cumbria
 CA11 9GR
 01768881111
 Sales@brittonestates.co.uk
 www.brittonestates.co.uk