



| North Stainmore | Kirkby Stephen | CA17 4EX

Guide Price £500,000



david britton
ESTATES

Key features

- 4 bedroom detached farmhouse
- Set in approx 1 acre
- Large kitchen/diner
- Living room
- Office/snug
- Huge workshop/garage
- Out buildings
- Stunning views

Description

A Stunning four bedroomed family home set in over an acre with incredible open views. A range of outbuildings including a Large Workshop/garage (45'5 x 30' approx.) With great access links to the A66



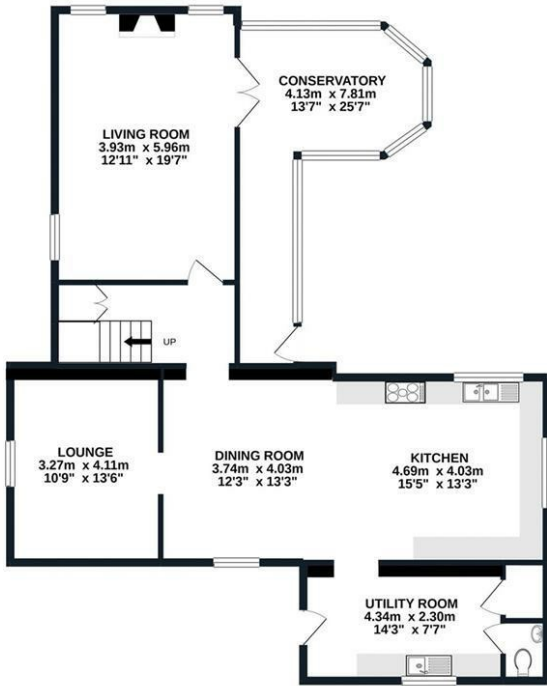
Directions



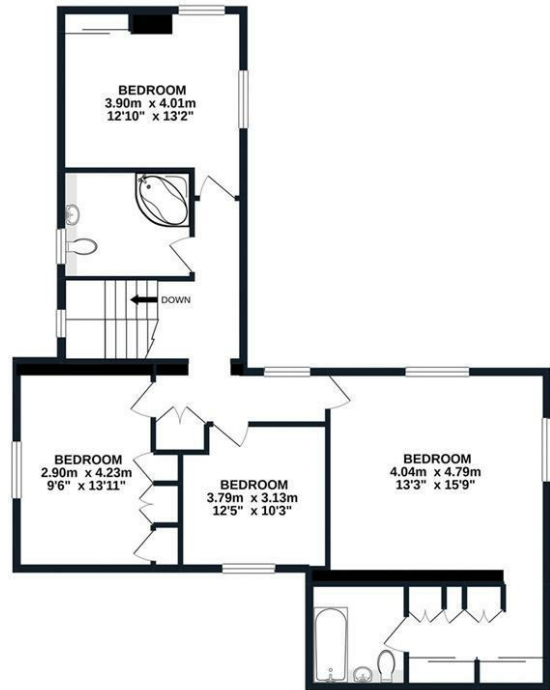


Floor plans

GROUND FLOOR
107.1 sq.m. (1153 sq.ft.) approx.



1ST FLOOR
91.7 sq.m. (987 sq.ft.) approx.



TOTAL FLOOR AREA : 198.8 sq.m. (2140 sq.ft.) approx.
Made with Metropix ©2021

Energy Efficiency Rating		Current	Potential
Very energy efficient - lower running costs			
(92 plus) A			
(81-91) B			82
(69-80) C			
(55-68) D		51	
(39-54) E			
(21-38) F			
(1-20) G			
Not energy efficient - higher running costs			
England & Wales		EU Directive 2002/91/EC	



Unit 3 Mason Court Gillan Way, Penrith 40 Business Park
Penrith
Cumbria
CA11 9GR
01768881111
Sales@brittonestates.co.uk
www.brittonestates.co.uk