



Maypole Terrace | Temple Sowerby | Penrith | CA10 1RX

Guide Price £225,000



david britton
ESTATES

Key features

- Two-bedroom mid-terrace cottage
- Popular Eden Valley village
- Close to amenities and transport links
- Fully renovated to an extremely high standard
- Spacious accommodation throughout
- Living room
- Dining kitchen and utility room
- Two double bedrooms
- family bathroom
- A patio garden at the front and a communal yard with a brick outhouse at the rear

Description

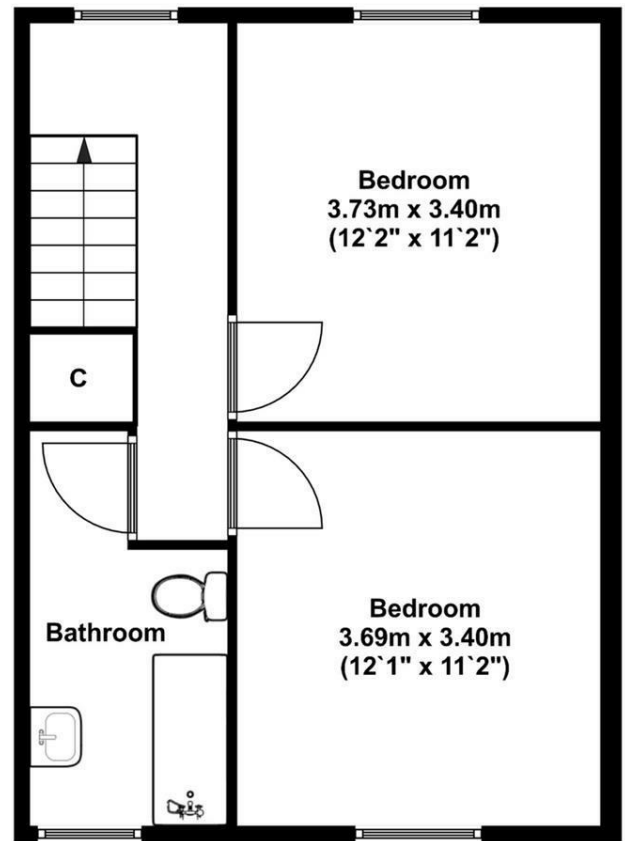
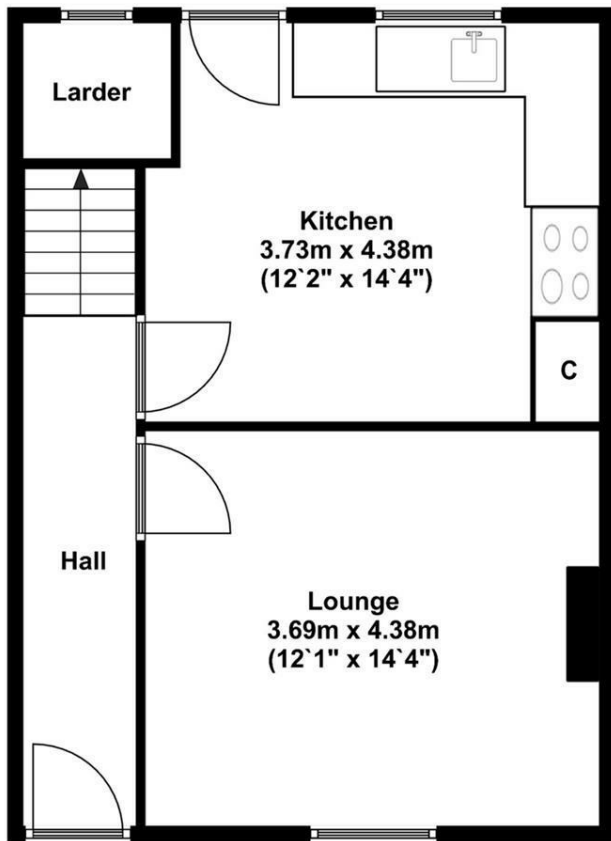
A rare opportunity to buy an outstandingly finished sandstone fronted mid-terrace property, overlooking a beautiful village green in a fabulous Eden Valley location, offering great facilities and travel access links.



Directions



Floor plans



Ground Floor
Approx 38.00 Sq meters (409.00 S qq feet).

First Floor
Approx 38.00 Sq meters (409.00 S qq feet).

Energy Efficiency Rating		Current	Potential
Very energy efficient - lower running costs			
(92 plus) A			95
(81-91) B			
(69-80) C			
(55-68) D		49	
(39-54) E			
(21-38) F			
(1-20) G			
Not energy efficient - higher running costs			
England & Wales		EU Directive 2002/91/EC	



Unit 3 Mason Court Gillan Way, Penrith 40 Business Park
Penrith
Cumbria
CA11 9GR
01768881111
Sales@brittonestates.co.uk
www.brittonestates.co.uk