



| Heads Nook | Brampton | CA8 9AE

Guide Price £365,000



david britton
ESTATES

Key features

- Detached bungalow
- Popular location close to amenities and excellent transport links
- Spacious accommodation in need of a little updating
- Living room
- Sunroom
- Three bedrooms
- Master en-suite shower room
- Family bathroom
- Separate WC
- Large gardens at the front and rear

Description

Found in the pretty village of Heads Nook just outside of Carlisle is this fantastic opportunity to own a three-bedroom detached bungalow, a great blank canvas for a prospective buyer to put their own stamp on creating a wonderful family home.

The property sits on 0.6 of an acre and boasts an extremely large front and rear garden benefiting from driveway parking for several vehicles as well as a detached garage.

Internally the accommodation is spacious and comprises of an entrance hallway, living room, sunroom, bathroom, separate WC, three bedrooms with the master having an en-suite shower and an open plan kitchen/diner with a side porch. It also benefits from a newly fitted combo boiler.

Heads Nook itself is an extremely popular village with Corby Hill approx. 1 mile away where there are shops, an award-winning butchers, supermarket, bakers, and garage. The market town of Brampton which is approx. 6 miles away also offers local amenities including shops, cafes, pubs, school etc and the City of Carlisle is approx. 5 miles away where there is an abundance of amenities and easy access to the M6.

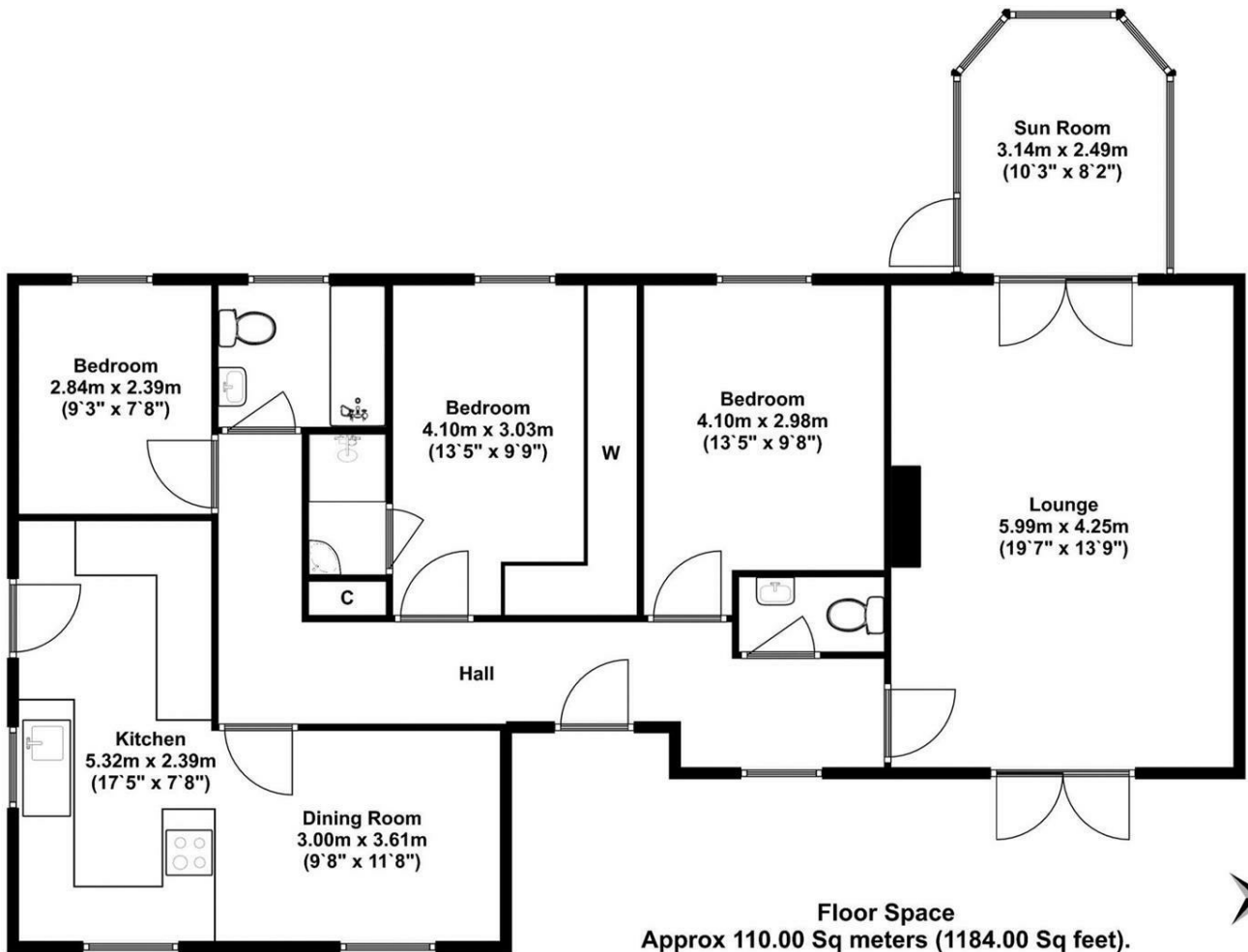
** Viewing strictly by appointment only **

Directions





Floor plans



Energy Efficiency Rating		
	Current	Potential
<i>Very energy efficient - lower running costs</i>		
(92 plus) A		
(81-91) B		
(69-80) C		
(55-68) D		
(39-54) E		
(21-38) F		
(1-20) G		
<i>Not energy efficient - higher running costs</i>		
England & Wales	EU Directive 2002/91/EC	



Unit 3 Mason Court Gillan Way, Penrith 40 Business Park
 Penrith
 Cumbria
 CA11 9GR
 01768881111
 Sales@brittonestates.co.uk
 www.brittonestates.co.uk