



| Askham | Penrith | CA10 2PU

Guide Price £1,850,000



david britton
ESTATES

Key features

- Five/six bedroom detached Grade II Listed house
- Large Plot with around 3.5 acres of land
- Desirable, standalone location, nestled at the foot of Knipe Scar
- Sitting at the head of the Lowther Valley in the Lake District National Park
- Immaculately presented throughout
- Abundance of Character and Charm
- Partially converted barn to the side
- Stone outbuildings with further development potential (STP)
- Sweeping Driveway with ample off road parking
- Sits on a 3.5 acre plot having a paddock which is perfect for live stock

Description

Nestled at the foot of Knipe Scar in the Lake District National Park is this magnificent 16th Century Lakeland Hall, the hall sits at the head of the Lowther Valley with widespread views down the valley to the Lakeland Fells beyond. It is a superb opportunity for a buyer looking for a substantial family home with a country lifestyle and fantastic grounds in the Lake District National Park. At the heart of the plot is a large, beautifully restored 16th Century Grade II Listed Hall which combines a fabulous mix of modern styling and original period features, steeped in history. With the benefit of an adjacent first floor barn with vaulted ceiling and bank barn style doorway and a large Old Dairy, there are a host of flexible options of the use of these incredible and extensive spaces.

This ancient Lakeland Hall is believed to date back to the 16th century and retains many charming and original features including exposed beams, stone flagged floors, original studded doorways, leaded windows, wooden shutters, ornate fire surrounds and many more period features. It is in immaculate order and has been maintained to an exacting standard with high quality finishes and stylish decor. Each window throughout the property is blessed with wonderful views across its beautiful grounds to the rear and to the courtyard to the front!

Internally the accommodation is arranged over two floors centred around two stunning staircases including a circular stone staircase. There are three characterful reception rooms, one with an impressive mezzanine level snug/library, a large bespoke fitted kitchen/family room with AGA five/six bedrooms, utility room, boot room and access into the adjacent barn, which has a host of flexible options. There is no shortage of storage and additional flexible use spaces.

Externally, approached by a sweeping, tree-lined driveway, this is a generous plot, extending to around 3.5 acres, mostly used as paddocks for livestock but with an ample parking area, ele

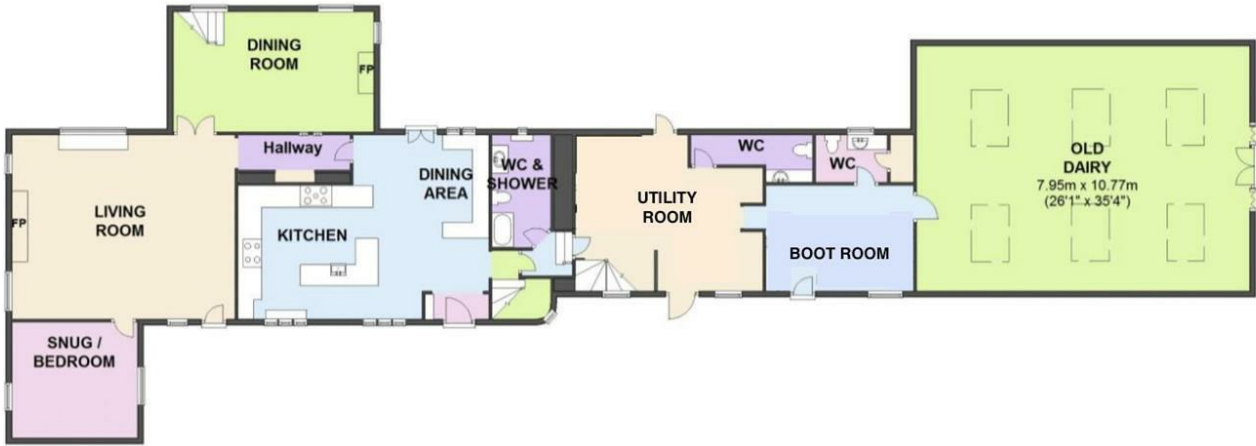
Directions





Floor plans

Ground Floor



First Floor



Second Floor



Energy Efficiency Rating		
	Current	Potential
Very energy efficient - lower running costs		
(92 plus) A		
(81-91) B		
(69-80) C		
(55-68) D		
(39-54) E		
(21-38) F		
(1-20) G		
Not energy efficient - higher running costs		
England & Wales	EU Directive 2002/91/EC	



Unit 3 Mason Court Gillan Way, Penrith 40 Business Park
 Penrith
 Cumbria
 CA11 9GR
 01768881111
 Sales@brittonestates.co.uk
 www.brittonestates.co.uk