



| Hackthorpe | Penrith | CA10 2HS

Guide Price £430,000



david britton
ESTATES

Key features

- Four Bedroom 1620 sqft Detached Home
- Exclusive New Development
- New Build Home
- High quality fixtures and fittings
- Luxurious specification
- Large open plan kitchen/dining room
- Lounge
- Four bedrooms, one with ensuite shower room
- Family bathroom and cloakroom
- 10 Years Builders Warranty

Description

**** PLOT 15 - LUXURIOUS 1620 SQFT FOUR BEDROOM DETACHED NEW BUILD HOME WITH QUALITY FINISH, ATTENTION TO DETAIL AND IN A STUNNING & ACCESSIBLE LOCATION ****

The next exciting instalment of their superb site at Hackthorpe, Stoneswood offers this wonderful four bedroom detached home of around 1620 sqft of living accommodation with generous proportions, both inside and out. Its layout is well considered with external stone and wood finishes, high quality kitchen & bathrooms, attractive design and a location that has a mix of woodland & mountain views.

Internally on the ground floor there is an impressive full height entrance hallway, large open plan kitchen/dining room with French doors to the rear garden, lounge, cloakroom and two bedrooms, one with ensuite shower room and one which could be used as a study. On the first floor there are two double bedrooms both with roof windows, one with ensuite shower room and a stylish family bathroom.

Externally it has off road parking and gardens to the front and rear. Ideally located in the pretty village of Hackthorpe, just a stones throw away from Askham, Ullswater and the Lake District National Park.

The properties benefit from a 10 year Build Warranty with Q Assure.

The Hackthorpe site is focusing on the needs and requests of buyers throughout Cumbria with a large selection of bungalows of various sizes and semi detached houses, all with space and a great outlook. Each property is well considered with external stone and wood finishes, high quality kitchen & bathrooms, attractive design and a location that has a mix of woodland & mountain views.

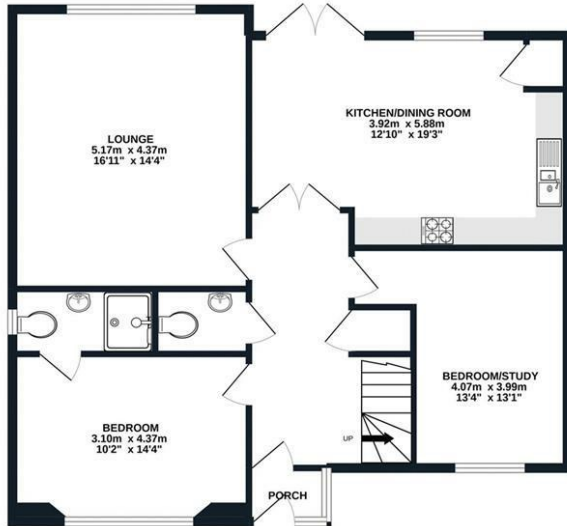
Directions



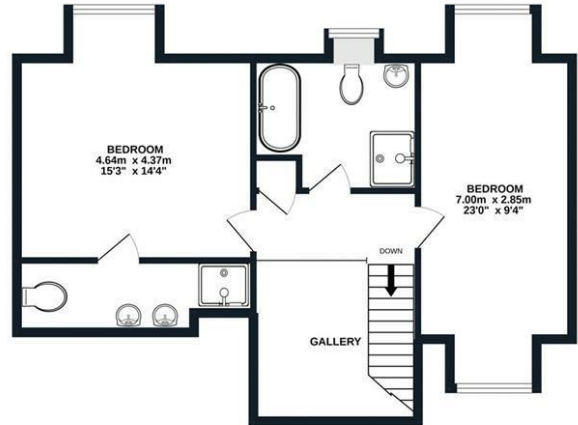


Floor plans

GROUND FLOOR
89.4 sq.m. (962 sq.ft.) approx.



1ST FLOOR
61.7 sq.m. (664 sq.ft.) approx.



TOTAL FLOOR AREA : 151.1 sq.m. (1626 sq.ft.) approx.
Made with Metropix ©2022

Energy Efficiency Rating		
	Current	Potential
<i>Very energy efficient - lower running costs</i>		
(92 plus) A		
(81-91) B		
(69-80) C		
(55-68) D		
(39-54) E		
(21-38) F		
(1-20) G		
<i>Not energy efficient - higher running costs</i>		
England & Wales	EU Directive 2002/91/EC	



Unit 3 Mason Court Gillan Way, Penrith 40 Business Park
Penrith
Cumbria
CA11 9GR
01768881111
Sales@brittonestates.co.uk
www.brittonestates.co.uk