



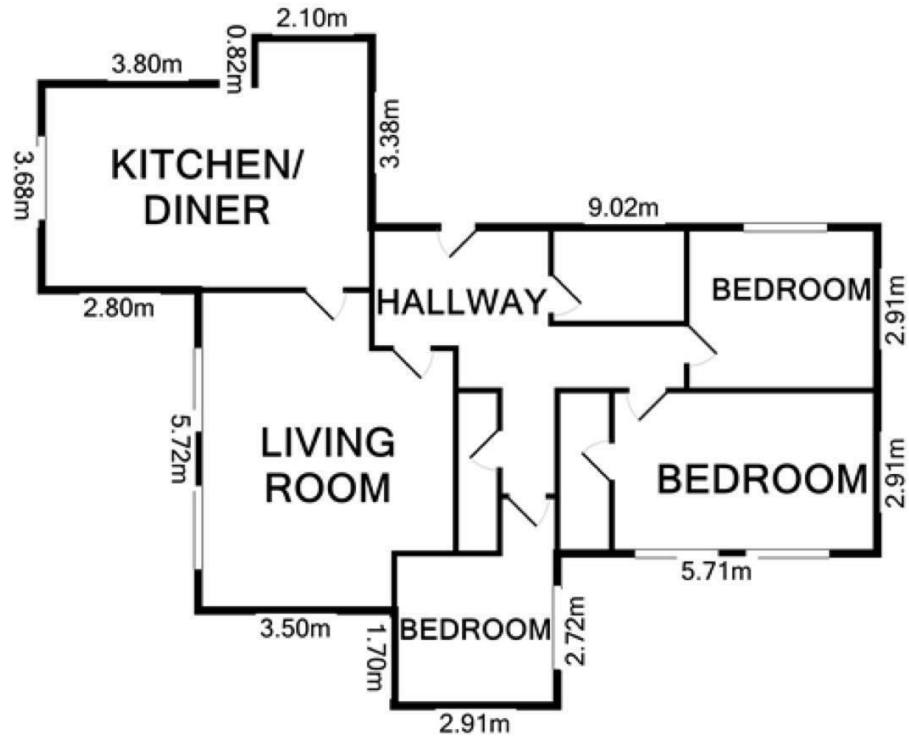
Royal Connaught Drive

, Bushey WD23 2RA

- Luxury first floor apartment
- Master bedroom with ensuite
 - Family bathroom
- 2 off-street parking spaces
- Leisure club with a gym
- Grade II Listed Building
- 2 further bedrooms
- Available 1st of July 2024
- 24 hours gated security
- Swimming pool and tennis courts

£3,000 PCM

Local Authority **Hertsmere**
Council Tax Band **G**
EPC Rating **C**



Made with Metropix ©2008

Mill Hill Office
Concorde House Grenville Place, London,
NW7 5SA

Contact
0203 544 1561
raphael@housemanhomes.co.

Agents Note: Whilst every care has been taken to prepare these particulars, they are for guidance purposes only. All measurements are approximate and for general guidance purposes only and whilst every care has been taken to ensure accuracy, they should not be relied upon and potential buyers/tenants are advised to recheck the measurements.

