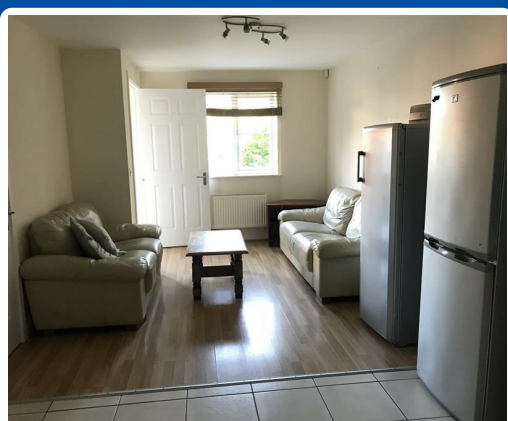




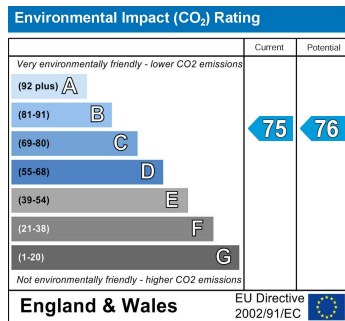
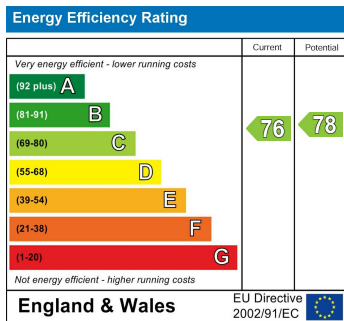
## St. Christophers Mews, Ramsgate, CT11 7SF

**£1,950 PCM**

Currently let to Pfizers Students. This property will be available from the end of August and should be viewed early to avoid disappointment. This furnished accommodation is arranged as follow - downstairs you will find an open-plan Kitchen/Lounge area with fitted wall/base units with surrounding tiling, fitted electric oven with gas hob and extraction hood over, washing machine and dishwasher and a door way to a shallow Hall giving access to the rear Garden and to the downstairs Cloakroom. Upstairs, on the first floor you will find three Bedrooms, one having an en-suite Shower Room. On the second floor you will find a further three more Bedrooms and a Bathroom with Bath, WC and wash hand basin. Finally, there is also a garage providing very useful storage space.



# St. Christophers Mews, Ramsgate, CT11 7SF



Lovetts Birchington Ltd. Trading as Lovetts Property Services  
 Registered Office – 13 Station Road, Birchington, Kent, CT7 9DJ  
 Reg. In England No. 4264378 VAT No.785 158296  
 Directors: Richard Crosby MNAEA & Tracey Crosby

