



Daffodil Crescent

Forge Wood, Crawley, RH10 3GQ

£270,000 Leasehold

Taylor Robinson is delighted to welcome to the market a 2 bedroom ground floor spacious apartment in the highly sought after area of Forge Wood. The property in brief comprises of an entrance hall with large utility cupboard, a spacious open planned living/ dining and kitchen area with integrated appliances, two good sized bedrooms and a family bathroom fitted in a white contemporary suite. Externally the property offers allocated parking space and visitors parking, The property also benefits from double glazing and gas central heating.

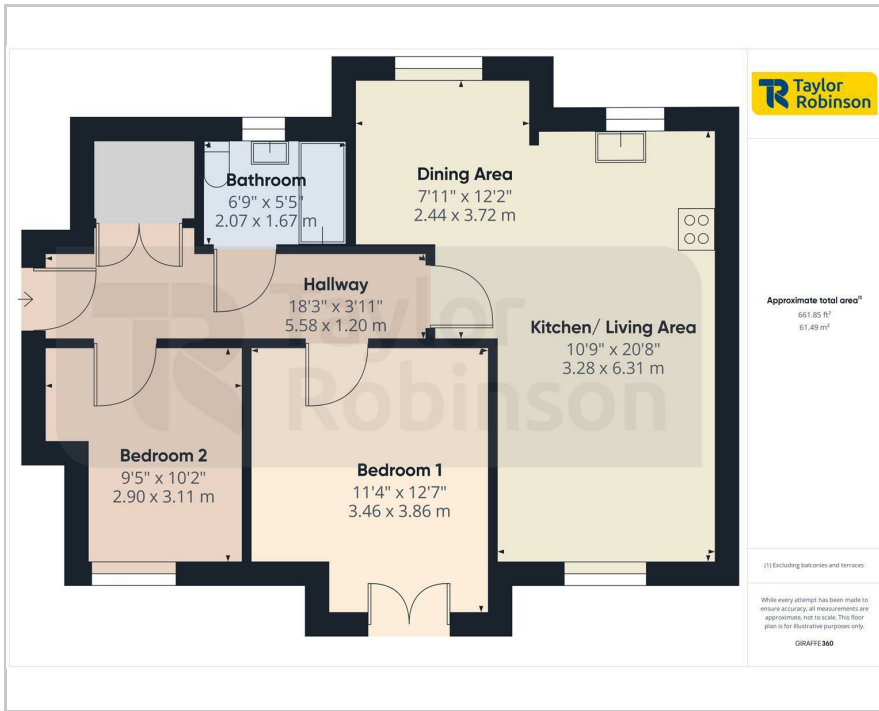
- 2 Bedroom Apartment
- Well Presented
- Ground Floor
- Open Plan Kitchen/ Living/ Dining Room
- Utility Cupboard
- Allocated Parking Space
- Double Glazing & Gas Central Heating
- Sought After Location
- Remaining Lease Term 118 years
- Annual Ground Rent £250 & Service Charge £1640

Viewing

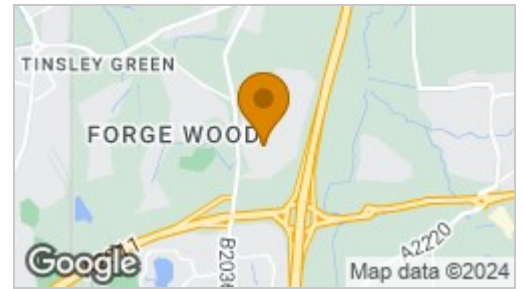
Please contact our Taylor Robinson Office on 01293 552388 if you wish to arrange a viewing appointment for this property or require further information.



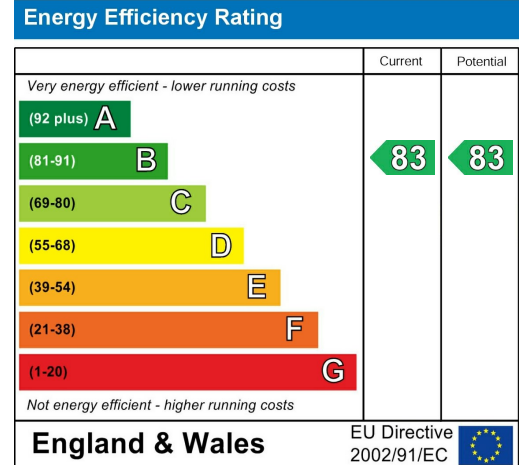
Floor Plan



Area Map



Energy Efficiency Graph



Council Tax Band: C



These particulars, whilst believed to be accurate are set out as a general outline only for guidance and do not constitute any part of an offer or contract. Intending purchasers should not rely on them as statements of representation of fact, but must satisfy themselves by inspection or otherwise as to their accuracy. No person in this firm's employment has the authority to make or give any representation or warranty in respect of the property.