



Windmill Platt

Handcross, Haywards Heath, RH17 6BS

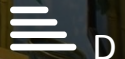
£180,000 Leasehold

Taylor Robinson welcomes to the market a 1-bedroom ground floor apartment in Handcross. The property in brief comprises of an entrance hall, light and airy living room with views of the communal gardens, a fully fitted kitchen, double bedroom and bathroom fitted in a white contemporary suite. Externally you will find communal gardens mainly laid to lawn and a car park. The property also benefits from double glazing, allocated parking space and is located close to the local amenities.

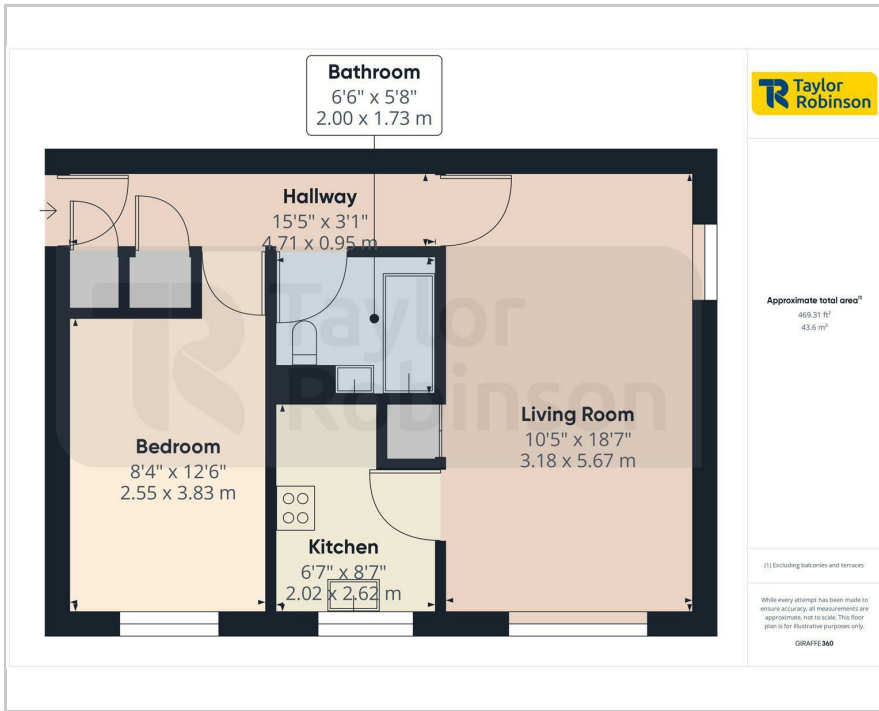
- 1 Bedroom Apartment
- Ground Floor
- Fully Fitted Kitchen
- Light and Airy Living Room
- Double Glazing
- Close to Local Amenities
- Allocated Parking
- Sought After Location
- Lease Term Remaining 151 years
- Annual Ground Rent & Service Charge £2820

Viewing

Please contact our Taylor Robinson Office on 01293 552388 if you wish to arrange a viewing appointment for this property or require further information.



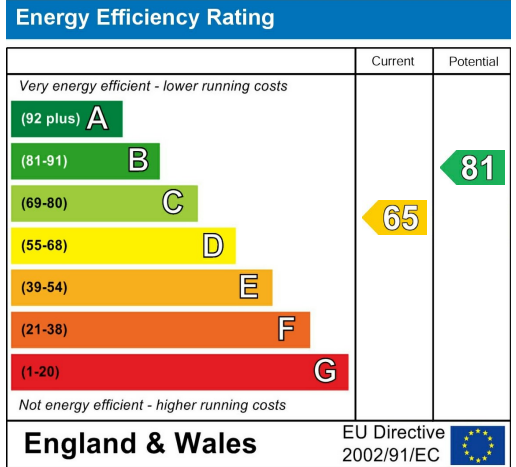
Floor Plan



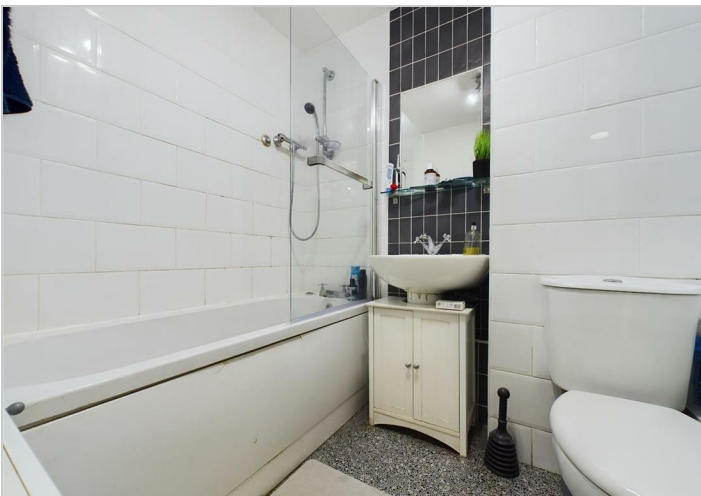
Area Map



Energy Efficiency Graph



Council Tax Band: A



These particulars, whilst believed to be accurate are set out as a general outline only for guidance and do not constitute any part of an offer or contract. Intending purchasers should not rely on them as statements of representation of fact, but must satisfy themselves by inspection or otherwise as to their accuracy. No person in this firm's employment has the authority to make or give any representation or warranty in respect of the property.

2 Brittingham House Orchard Street, Crawley, West Sussex, RH11 7AE Tel: 01293 552388
Email: sales@taylor-robinson.co.uk www.taylor-robinson.co.uk