



Weirbrook

Furnace Green, Crawley, RH10 6PE

£215,000 Leasehold

Taylor Robinson is delighted to welcome to the market a 2-bedroom spacious apartment in the highly sought after area of Furnace Green, conveniently located within easy access to Three Bridges main line station with direct routes to London, Gatwick Airport & Brighton. The property in brief comprises of an entrance hall, a spacious living room, fully fitted kitchen, two double bedrooms and a family bathroom with separate W.C. The property also benefits from communal garden, double glazing, gas central heating, communal parking and a brick-built outbuilding.

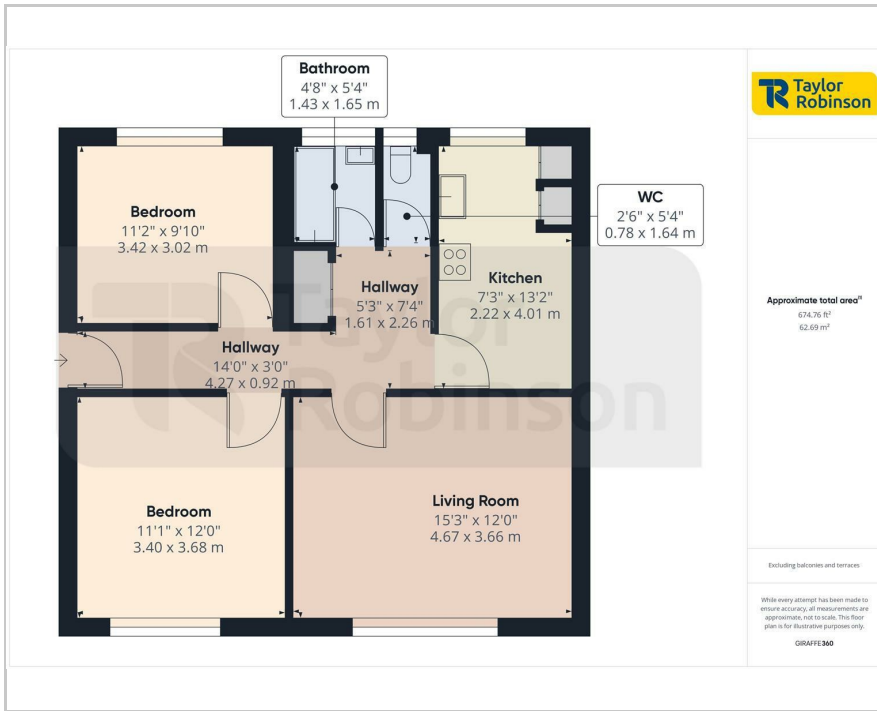
- 2 Bedroom Apartment
- Light and Airy Living Room
- Fully Fitted Kitchen
- Double Glazing
- Gas Central Heating
- Sought After Location
- 2 Double Bedrooms
- Remaining Lease Term 89 Years
- Annual Ground Rent £10
- Annual Service Charge £450

Viewing

Please contact our Taylor Robinson Office on 01293 552388 if you wish to arrange a viewing appointment for this property or require further information.



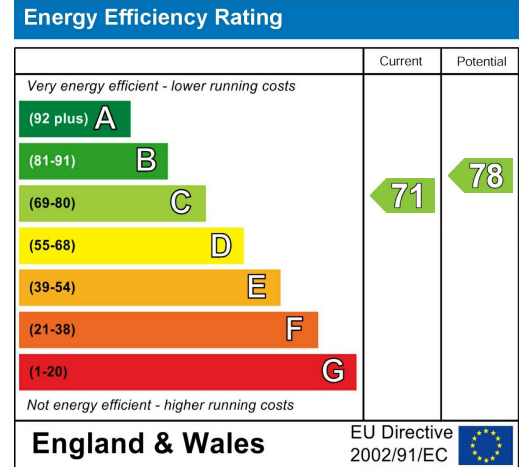
Floor Plan



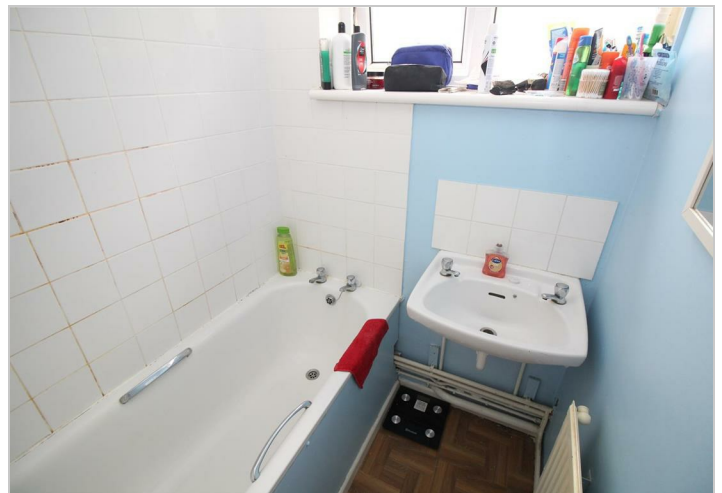
Area Map



Energy Efficiency Graph



Council Tax Band: B



These particulars, whilst believed to be accurate are set out as a general outline only for guidance and do not constitute any part of an offer or contract. Intending purchasers should not rely on them as statements of representation of fact, but must satisfy themselves by inspection or otherwise as to their accuracy. No person in this firm's employment has the authority to make or give any representation or warranty in respect of the property.