



# Oakwood Court, Mann Close

Tollgate Hill, Crawley, RH11 9TT

**£205,000 Leasehold**

Taylor Robinson are delighted to offer this 1 bedroom first floor apartment boasting a refitted kitchen with built in appliances, a refitted shower room and double glazed windows throughout. The property also benefits from electric heating and an allocated parking space.

Ideally located with access to local amenities, Fastway buses providing access to Crawley town, Gatwick and Manor Royal. The M23 and A264 roads are also close by. Internal viewing is strongly advised.

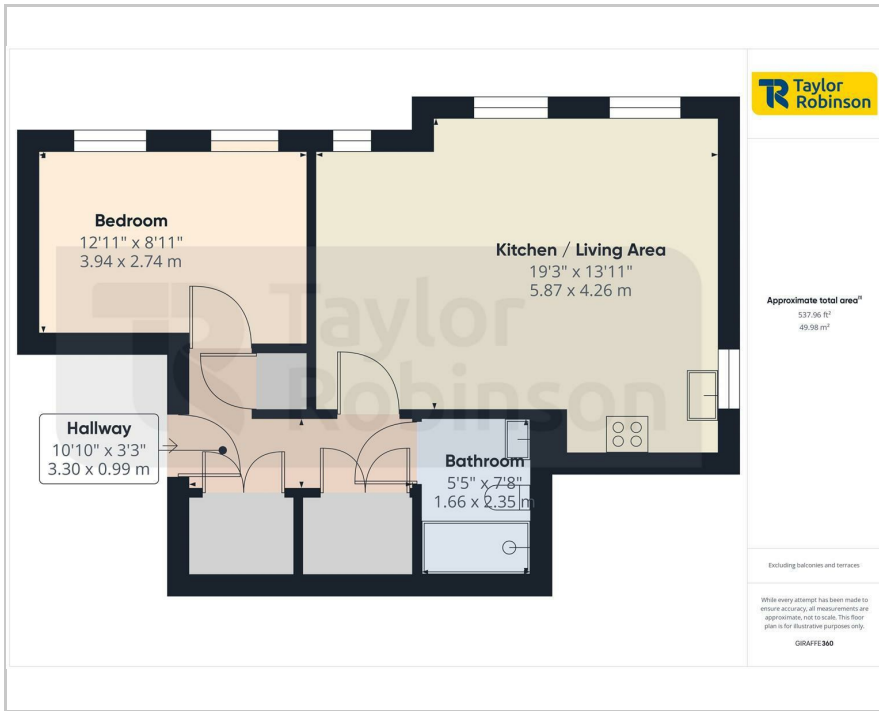
- 1 Double Bedrooms
- Living Room
- Refitted Kitchen
- Refitted Shower Room
- Lots of Storage Cupboards
- Electric Heating & Double Glazed Windows
- Close to M23 Motorway & Fastway Buses
- Remaining Term 107 years
- Annual Ground Rent £200.00
- Annual Service Charge £1518.86

### Viewing

Please contact our Taylor Robinson Office on 01293 552388 if you wish to arrange a viewing appointment for this property or require further information.

 1
  1
  1
  C

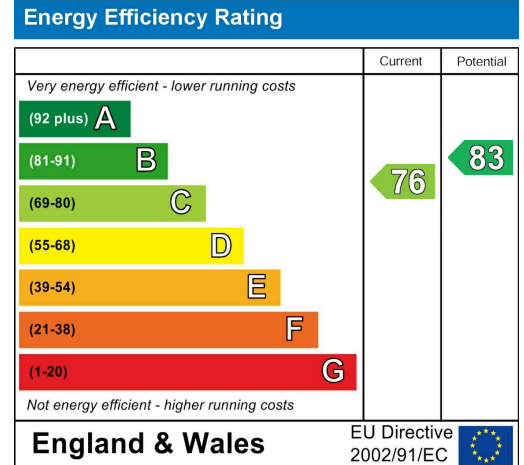
## Floor Plan



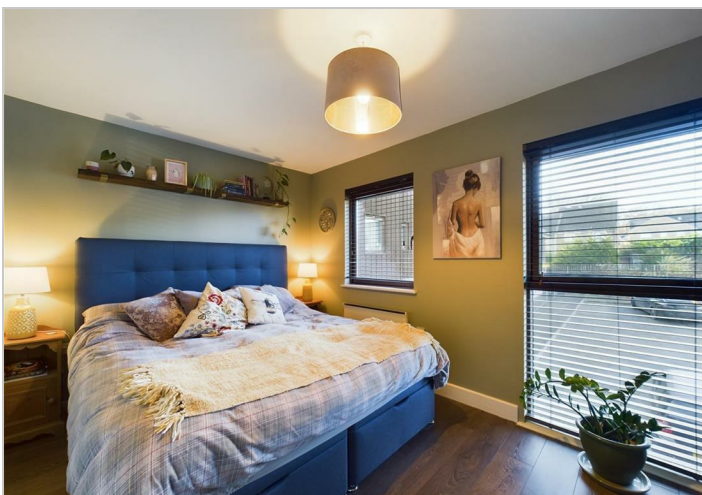
## Area Map



## Energy Efficiency Graph



## Council Tax Band: B



These particulars, whilst believed to be accurate are set out as a general outline only for guidance and do not constitute any part of an offer or contract. Intending purchasers should not rely on them as statements of representation of fact, but must satisfy themselves by inspection or otherwise as to their accuracy. No person in this firm's employment has the authority to make or give any representation or warranty in respect of the property.

**2 Brittingham House Orchard Street, Crawley, West Sussex, RH11 7AE Tel: 01293 552388**  
**Email: sales@taylor-robinson.co.uk www.taylor-robinson.co.uk**