



## Portland Street, Staple Hill, Bristol, BS16 4PT

£185,000

Brunt & Fussell are pleased to offer for sale this charming maisonette with private entrance located on Portland Street in the heart of Staple Hill. The property is in good condition and comprises one bedroom, Kitchen/Diner and a well-maintained bathroom. Situated in a prime location, this maisonette is conveniently close to local amenities, providing easy access to shops, cafe's, and other essential services. This property would make a perfect buy for an investor or someone looking to get on the property ladder. Council Tax A and Energy Rating C.

- One Bed Maisonette
- Close To Local Amenities
- G/h and D/g
- Large Shower room
- Private Entrance
- Must be Viewed

### Viewing

Please contact our Brunt & Fussell Ltd Office on 01179566004 if you wish to arrange a viewing appointment for this property or require further information.



1



1

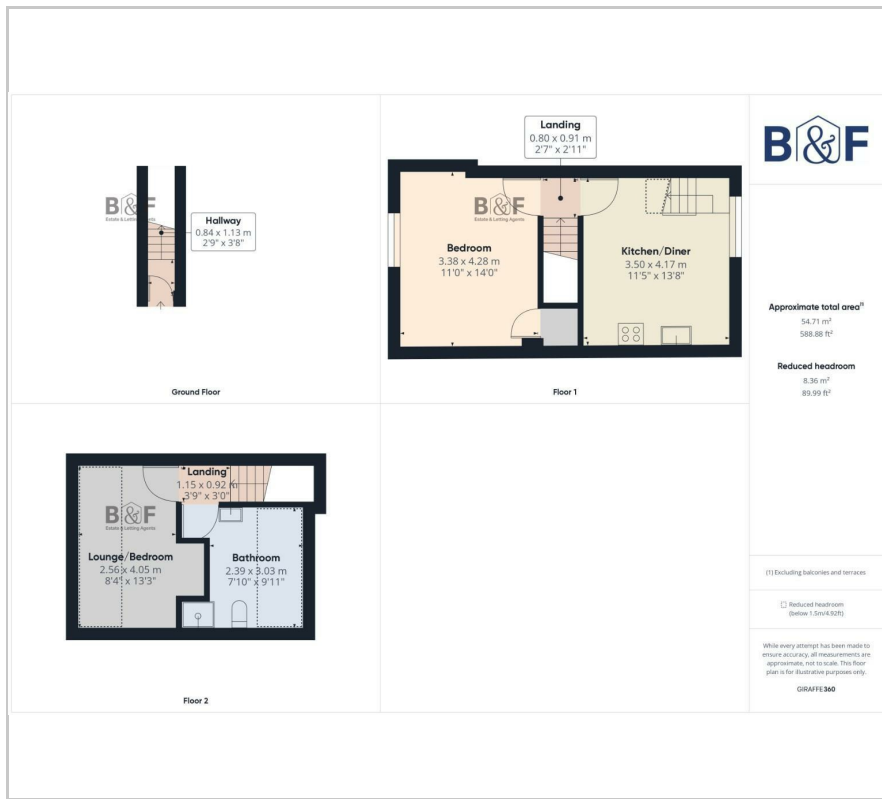


1

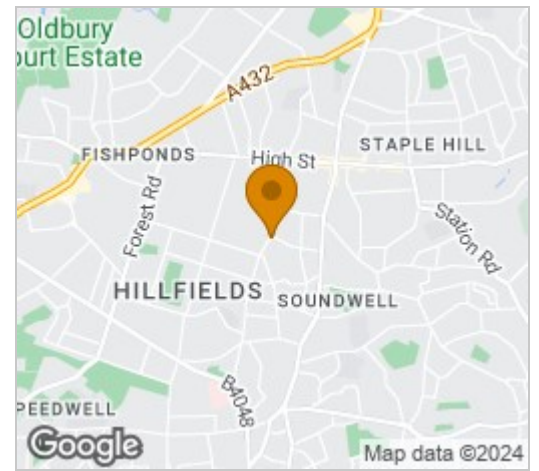


C

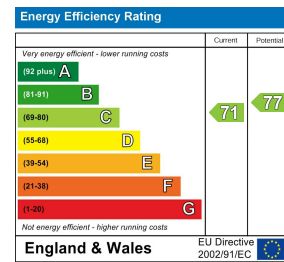
# Floor Plan



# Area Map



# Energy Efficiency Graph



These particulars, whilst believed to be accurate are set out as a general outline only for guidance and do not constitute any part of an offer or contract. Intending purchasers should not rely on them as statements of representation of fact, but must satisfy themselves by inspection or otherwise as to their accuracy. No person in this firm's employment has the authority to make or give any representation or warranty in respect of the property.