



Woodland Way Kingswood, BS15 1QH

£350,000

Offered for sale with no onward chain, this attractive three bedroom semi-detached house with enclosed gardens and garage. The property has been well maintained, but is probably best described as tired and now requires some updating. The property briefly comprises hallway, lounge, dining room, kitchen, three bedrooms and family bathroom. Other benefits include gas central heating and double glazing. Situated on this popular road close to local amenities, bus routes and local schools. Energy Rating D. Council Tax B.

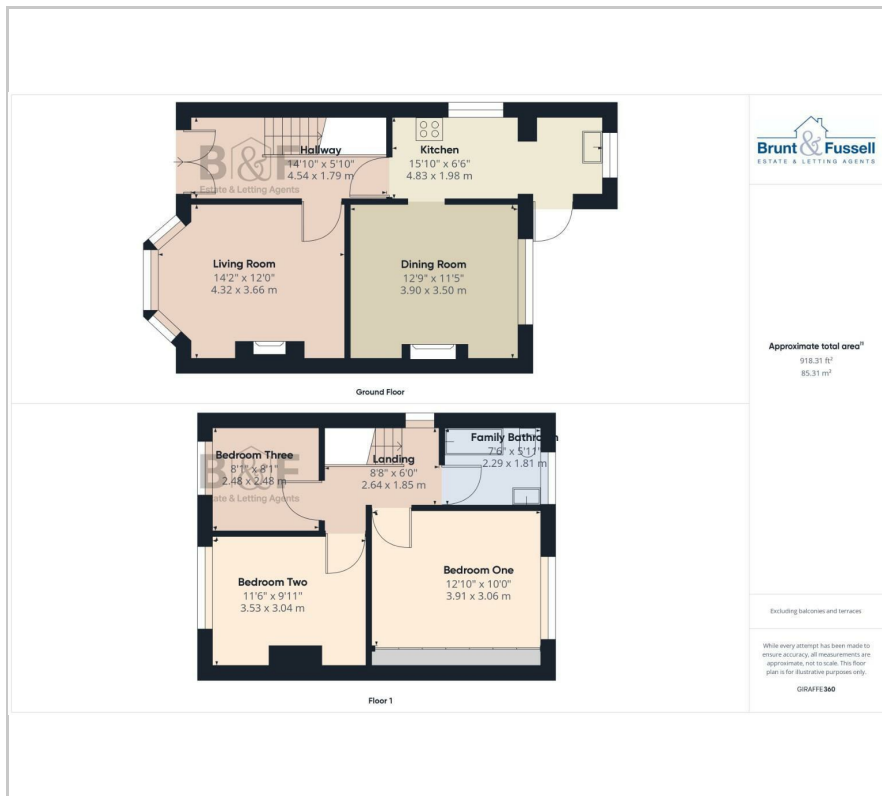
- Three Bedrooms
- D/g & Gas Ch
- Detached Garage
- Requires Some Updating
- No Onward Chain
- Popular Location

Viewing

Please contact our Brunt & Fussell Ltd Office on 01179566004 if you wish to arrange a viewing appointment for this property or require further information.



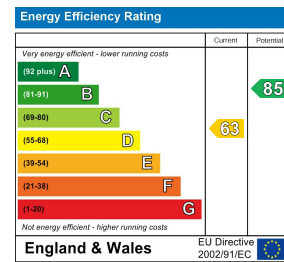
Floor Plan



Area Map



Energy Efficiency Graph



These particulars, whilst believed to be accurate are set out as a general outline only for guidance and do not constitute any part of an offer or contract. Intending purchasers should not rely on them as statements of representation of fact, but must satisfy themselves by inspection or otherwise as to their accuracy. No person in this firm's employment has the authority to make or give any representation or warranty in respect of the property.