



Corinum Close Emersons Green, BS16 7HW

Asking Price £299,950

We are delighted to offer for sale this stunning two-bedroom mid-terrace home with enclosed landscaped garden, garage and off-street parking. The house has been vastly improved by the current owners over the past three years. The accommodation briefly comprises hallway, cloakroom, lounge, kitchen/diner with light grey shaker style kitchen, two bedrooms and bathroom. The property is situated in this quiet backwater, yet close to the amenities of Emerson Green, ring road and cycle path. In our opinion this property is ideal for the first time-buyer/investor. Council Tax C. Energy Rating C.

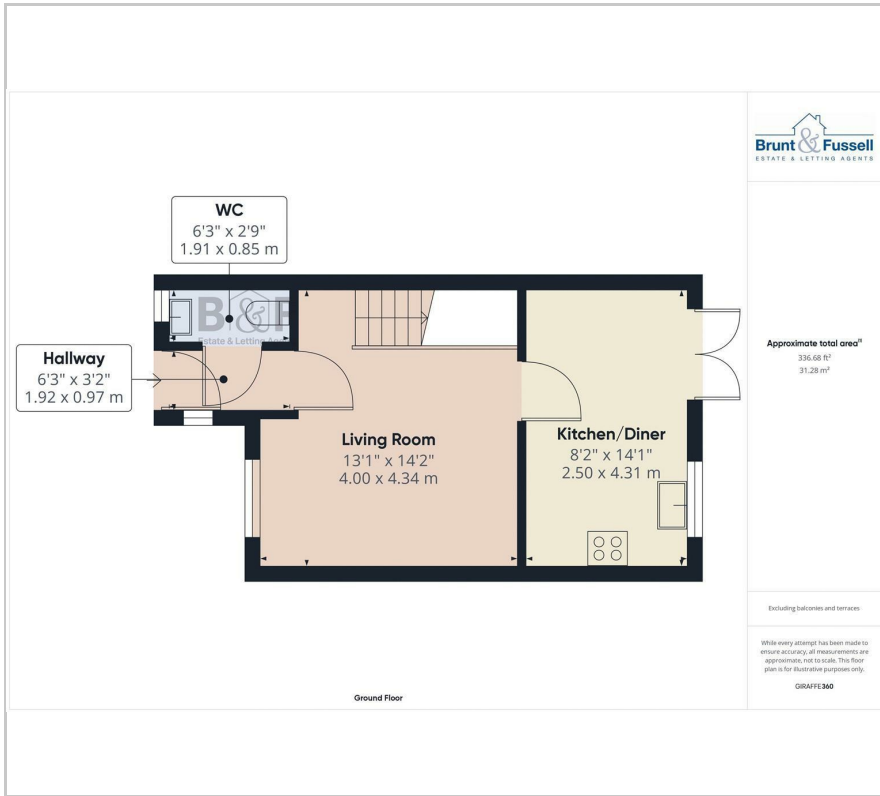
- Modern Home
- First Time Buy
- Cloakroom
- Lounge
- Kitchen Diner
- Garage

Viewing

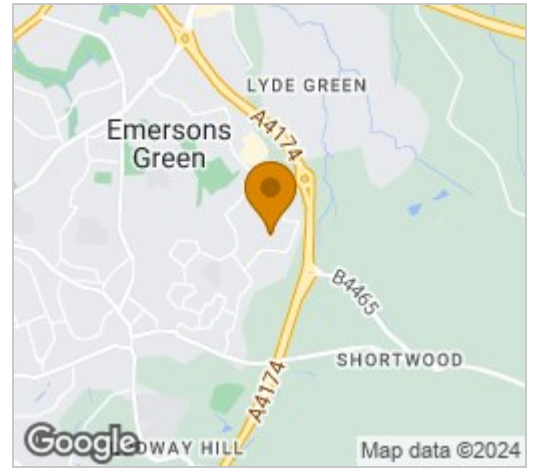
Please contact our Brunt & Fussell Ltd Office on 01179566004 if you wish to arrange a viewing appointment for this property or require further information.



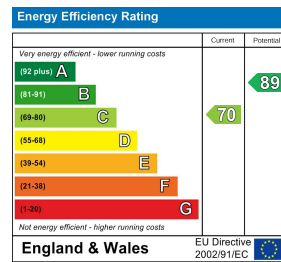
Floor Plan



Area Map



Energy Efficiency Graph



These particulars, whilst believed to be accurate are set out as a general outline only for guidance and do not constitute any part of an offer or contract. Intending purchasers should not rely on them as statements of representation of fact, but must satisfy themselves by inspection or otherwise as to their accuracy. No person in this firm's employment has the authority to make or give any representation or warranty in respect of the property.

141 High Street, Staple Hill, Bristol, BS16 5HQ

Tel: 01179566004 Email: info@bruntandfussell.co.uk www.bruntandfussell.co.uk