



Jubilee Crescent Mangotsfield, BS16 9BB

Asking Price £340,000

We are pleased to offer for sale this fine three bedroom mid-terrace family home with lovely mature enclosed garden, off-street parking and double garage. The property is in very good order throughout and benefits from gas central heating, two open fires and double glazing. The accommodation briefly comprises storm porch, hallway, cloakroom, lounge/diner, kitchen, three bedrooms and bathroom. This property offers easy access to the local amenities of Mangotsfield, Downend & Emersons Green, whilst offering excellent transport links onto The Avon ring road, motorway networks and Bristol cycle path. In our opinion this property would ideally suit a young family or car enthusiast making use of such a great garage. Council Tax Band C. Energy Rating D.

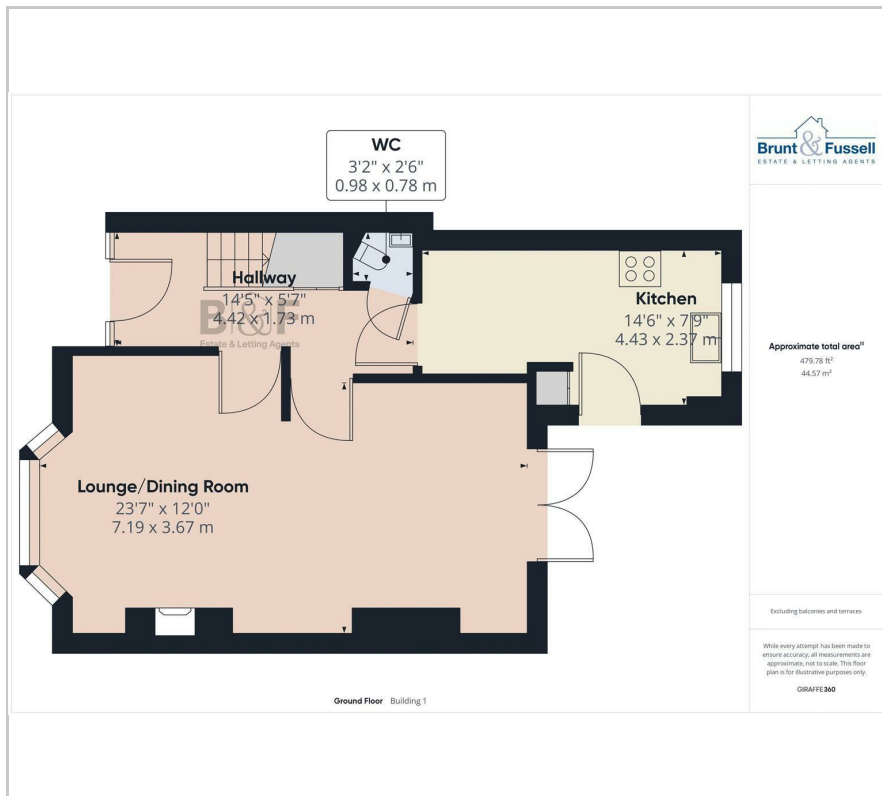
- Three Bedrooms
- Popular Road
- Good Order Throughout
- Double Garage
- D/g & Gas Ch
- Off-Street Parking

Viewing

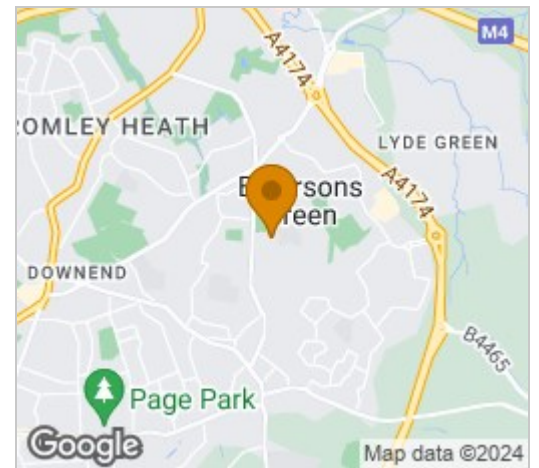
Please contact our Brunt & Fussell Ltd Office on 01179566004 if you wish to arrange a viewing appointment for this property or require further information.



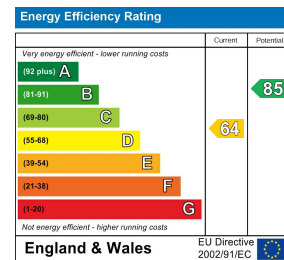
Floor Plan



Area Map



Energy Efficiency Graph



These particulars, whilst believed to be accurate are set out as a general outline only for guidance and do not constitute any part of an offer or contract. Intending purchasers should not rely on them as statements of representation of fact, but must satisfy themselves by inspection or otherwise as to their accuracy. No person in this firm's employment has the authority to make or give any representation or warranty in respect of the property.