



Derwent Road
Manchester
M41 8UJ

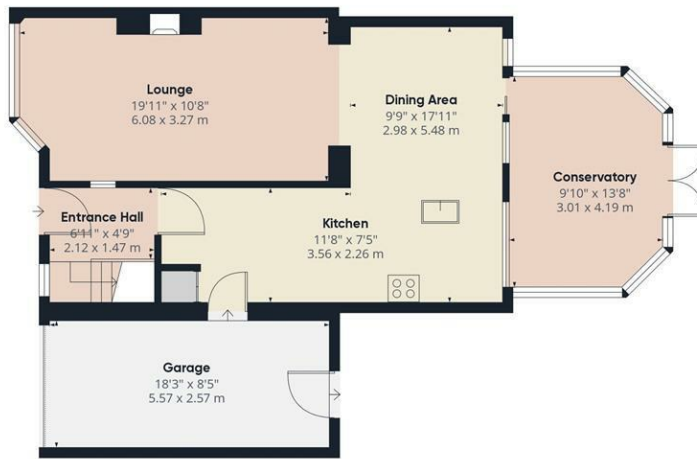
£425,000

PAUL BIRTLES

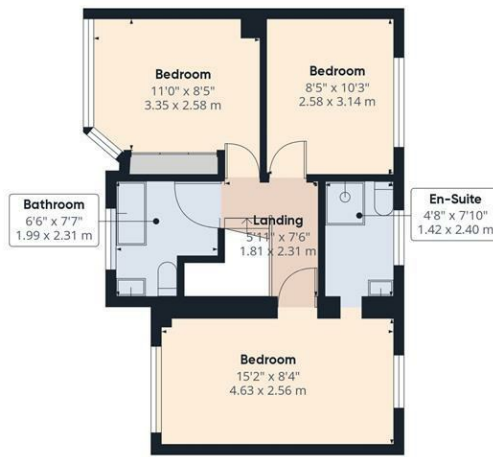


PAUL BIRTLES

SALES • RENTALS • MANAGEMENT



Ground Floor



Floor 1

PAUL BIRTLES

SALES • RENTALS • MANAGEMENT

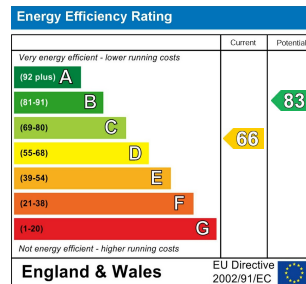
Approximate total area[®]

1257.58 ft²
116.83 m²

Excluding balconies and terraces

While every attempt has been made to ensure accuracy, all measurements are approximate, not to scale. This floor plan is for illustrative purposes only.

GIRAFFE 360



DIRECTIONS

CONTACT

3 Flixton Road
Urmston
Trafford
M41 5AW

E: info@paulbirtlesestateagents.co.uk
T: 0161 747 9095
www.paulbirtlesestateagents.co.uk



PAUL BIRTLES

SALES • RENTALS • MANAGEMENT

Paul Birtles Estate Agents have not tested any equipment, fittings, services or apparatus and so cannot verify they are in working order. Buyers are advised to seek verification from their own surveyors, solicitors or contractors. Whilst we endeavour to ensure our sales particulars are accurate and reliable, if there is any point of particular importance to you, please contact the office and we'll be pleased to check the information for you.

Paul Birtles & Co Ltd: Registered office Century Buildings, 14 St.Mary's Parsonage, Manchester, M3 2DF