

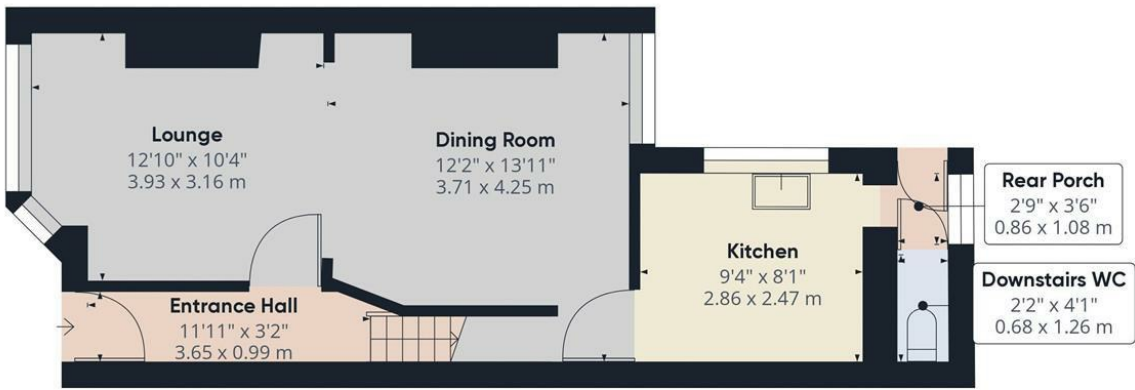


2 Bed
House - Terraced
located in Stretford

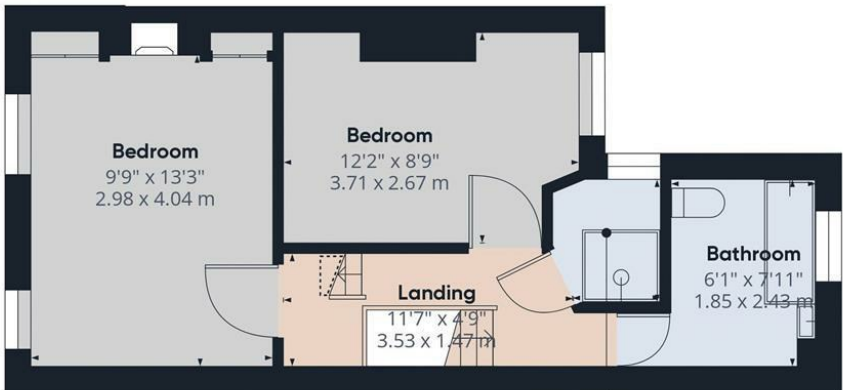
Offers Over £200,000



PAUL BIRTLES
SALES • RENTALS • MANAGEMENT



Ground Floor



Floor 1

PAUL BIRTLES
SALES • RENTALS • MANAGEMENT

Approximate total area[®]
779.78 ft²
72.44 m²

Reduced headroom
2.8 ft²
0.26 m²

Excluding balconies and terraces.

Reduced headroom (below 1.5m/4.92ft)

While every attempt has been made to ensure accuracy, all measurements are approximate, not to scale. This floor plan is for illustrative purposes only.

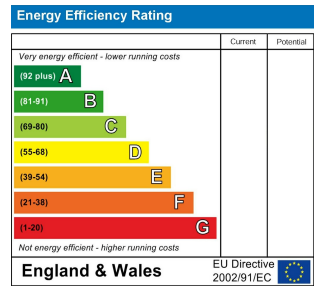
GIRAFFE360

DIRECTIONS

CONTACT

3 Flixton Road
Urmston
Trafford
M41 5AW

E: info@paulbirtlesestateagents.co.uk
T: 0161 747 9095



PAUL BIRTLES
SALES • RENTALS • MANAGEMENT