



Cumberland Road
Manchester
M41 9HS

£560,000

PAUL BIRTLES



PAUL BIRTLES



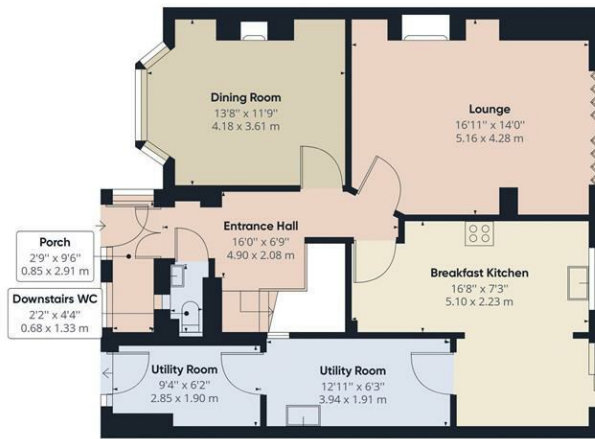
PAUL BIRTLES



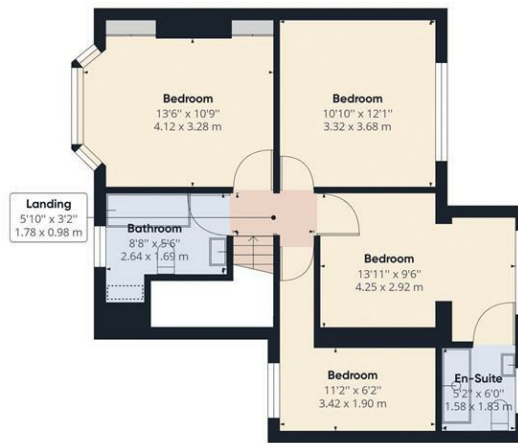
PAUL BIRTLES

PAUL BIRTLES

SALES • RENTALS • MANAGEMENT



Ground Floor



Floor 1

Energy Efficiency Rating		Current	Potential
Very energy efficient - lower running costs			
(92 plus)	A		
(81-91)	B		
(69-80)	C		
(55-68)	D		
(39-54)	E		
(21-38)	F		
(1-20)	G		
Not energy efficient - higher running costs			
England & Wales		EU Directive 2002/91/EC	

PAUL BIRTLES

SALES • RENTALS • MANAGEMENT

Approximate total area⁽¹⁾

1466.96 ft²
136.29 m²

Reduced headroom

3.18 ft²
0.30 m²

(1) Excluding balconies and terraces

Reduced headroom
(below 1.5m/4.92ft)

While every attempt has been made to ensure accuracy, all measurements are approximate, not to scale. This floor plan is for illustrative purposes only.

GIRAFFE360

DIRECTIONS

CONTACT

3 Flixton Road
Urmston
Trafford
M41 5AW

E: info@paulbirtlesestateagents.co.uk
T: 0161 747 9095
www.paulbirtlesestateagents.co.uk



PAUL BIRTLES

SALES • RENTALS • MANAGEMENT

Paul Birtles Estate Agents have not tested any equipment, fittings, services or apparatus and so cannot verify they are in working order. Buyers are advised to seek verification from their own surveyors, solicitors or contractors. Whilst we endeavour to ensure our sales particulars are accurate and reliable, if there is any point of particular importance to you, please contact the office and we'll be pleased to check the information for you.