

Hampton Road

, London, E4 8NT

Asking price £825,000

ONE OF A KIND!

Howse-group KW are delighted to present to market this spectacular FOUR bedroom property. Located in a tree lined residential street in South Chingford, this property is one of one. Boasting many features which includes; double glazing and gas central heating. On the ground floor, a front reception room, a large extended kitchen-diner with island integrated appliances, full length sliding patio doors to rear garden, a downstairs W.c and Utility room. To the first floor Three bedrooms serviced by a Family sized walk-in wet room. On the second floor a large master bedroom with sliding balcony doors and En-suite. Externally to the rear a rear accessible 120ft approx. well maintained and landscaped garden with large Garage, summer house/office shower room and sauna.

Call now to arrange a viewing 0208 087 3122

Viewing

Please contact us on 02080873122 if you wish to arrange a viewing appointment for this property or require further information.

- FOUR BEDROOM MID TERRACE PROPERTY
- SPECTACULAR INTERIOR DESIGN
- OPEN PLAN KITCHEN/LOUNGE
- FULL LENGTH SLIDING PATIO DOORS
- NEFF INTERGARTED APPLIANCES
- MASTER BEDROOM WITH ENSUITE
- 120FT APPROX REAR GARDEN WITH REAR ACCESS
- FULLY FUNCTIONING OUTBUILDING/ GARAGE
- OFFICE AND SUANA
- EPC TBC



4



2

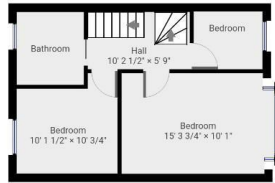
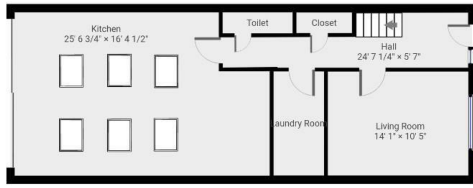


2



120ft approx rear garden

Floor Plan

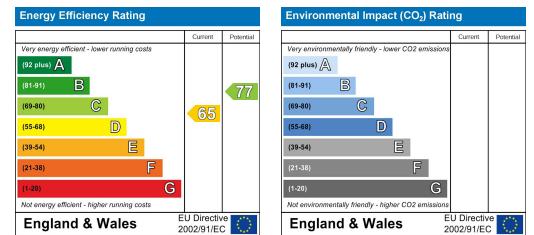


THIS FLOOR PLAN IS PROVIDED WITHOUT WARRANTY OF ANY KIND. SENSIBLE DISCLAIMERS INCLUDING, WITHOUT LIMITATION, SUBSTANTIAL QUALITY OR ACCURACY OF DIMENSIONS.

Area Map



Energy Efficiency Graph



These particulars, whilst believed to be accurate are set out as a general outline only for guidance and do not constitute any part of an offer or contract. Intending purchasers should not rely on them as statements of representation of fact, but must satisfy themselves by inspection or otherwise as to their accuracy. No person in this firm's employment has the authority to make or give any representation or warranty in respect of the property.