



Sewardstone Road

, London, E4 7PA

Guide price £700,000

Guide price £700,000- 725,000

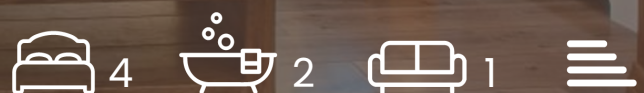
An opportunity to purchase an extended 5 bedroom family house laid out over three levels with the advantage of gated off street parking for up to four vehicles and rear vehicular access.

The property is located within reach of favoured schools (including Yardley Lane Primary), local shops and transport links including easy access to A10, M25 and A406.

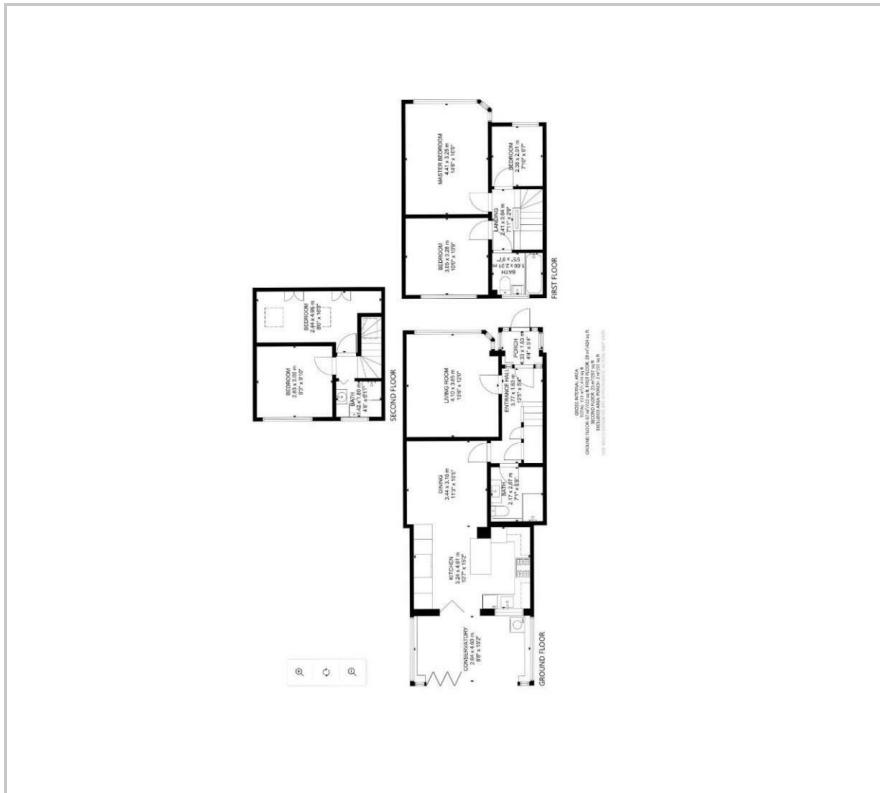
Viewing

Please contact us on 02080873122 if you wish to arrange a viewing appointment for this property or require further information.

- CHAIN FREE
- FOUR BEDROOMS
- OFF STREET PARKING UPTO 4 CARS
- CONSTERVATORY
- MODERN FITTED KITCHEN
- CATCHMENT AREA TO OUTSTANDING SCHOOLS
- GREAT TRANSPORT LINKS
- DOWNSTAIRS WC
- GARDEN 60FT
- EPC



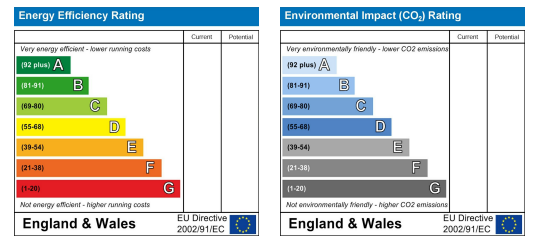
Floor Plan



Area Map



Energy Efficiency Graph



These particulars, whilst believed to be accurate are set out as a general outline only for guidance and do not constitute any part of an offer or contract. Intending purchasers should not rely on them as statements of representation of fact, but must satisfy themselves by inspection or otherwise as to their accuracy. No person in this firm's employment has the authority to make or give any representation or warranty in respect of the property.