



## Lancaster Road

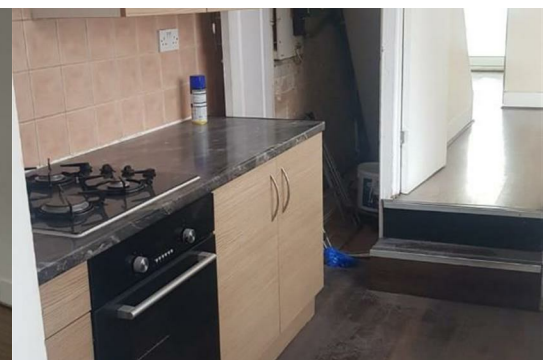
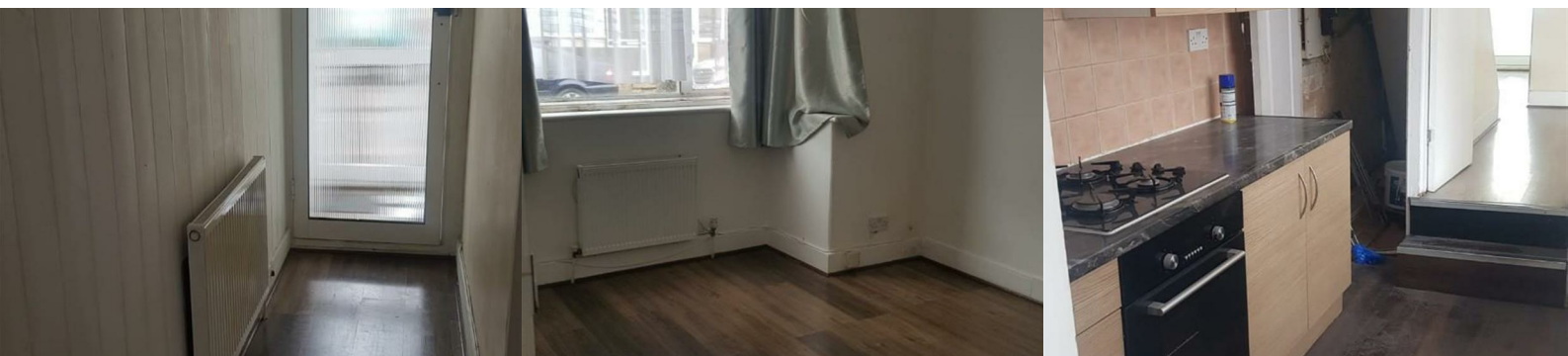
, London, E17 6AJ

**£1,850 Per month**



**\*DONT MISS OUT\*** HOWSE GROUP bring to market for LET this THREE/FOUR family home Located in E17 Walthamstow minutes walk to Blackhorse road Underground Station and great access to the local amenities . offering Three/Four bedrooms bathroom, separate WC, two reception rooms, integrated kitchen, double glazing, gas central heating and private garden. Available now unfurnished

Call to arrange a viewing 01992761986



ENTRANCE HALL

LOUNGE

KITCHEN

BATHROOM

WC

BEDROOM 1

BEDROOM 2

BEDROOM 3

LOFT ROOM

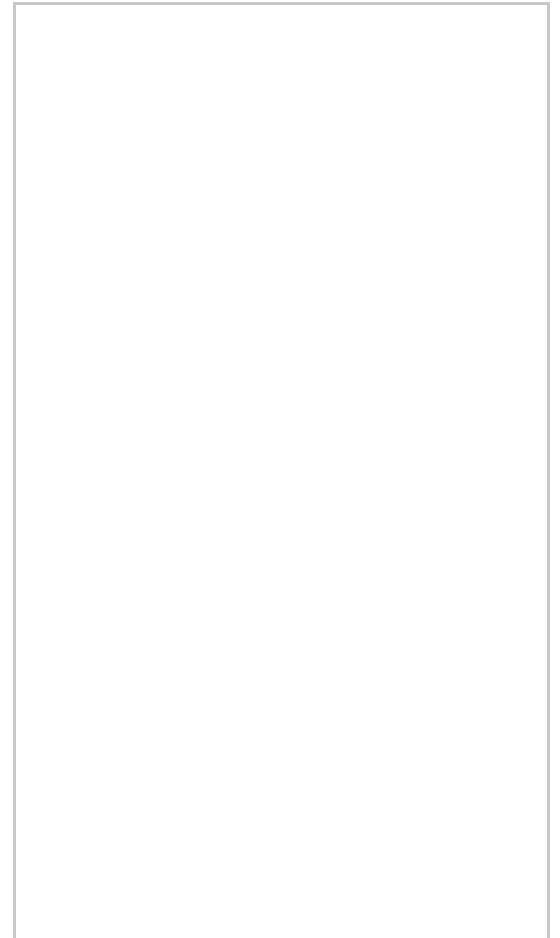
GARDEN



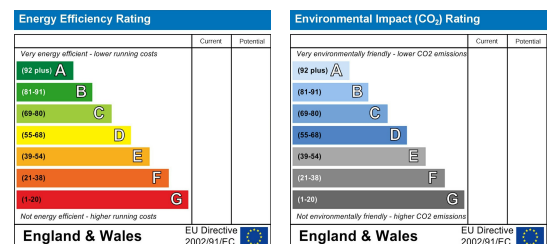
## Area Map



## Floor Plans



## Energy Efficiency Graph



These particulars, whilst believed to be accurate are set out as a general outline only for guidance and do not constitute any part of an offer or contract. Intending purchasers should not rely on them as statements of representation of fact, but must satisfy themselves by inspection or otherwise as to their accuracy. No person in this firm's employment has the authority to make or give any representation or warranty in respect of the property.



01992761986



info@howse-group.com



First Floor 480, Larkshall Road, Highams Park, London, E4 9HH