



Tiller Road

, London, E14 8PY

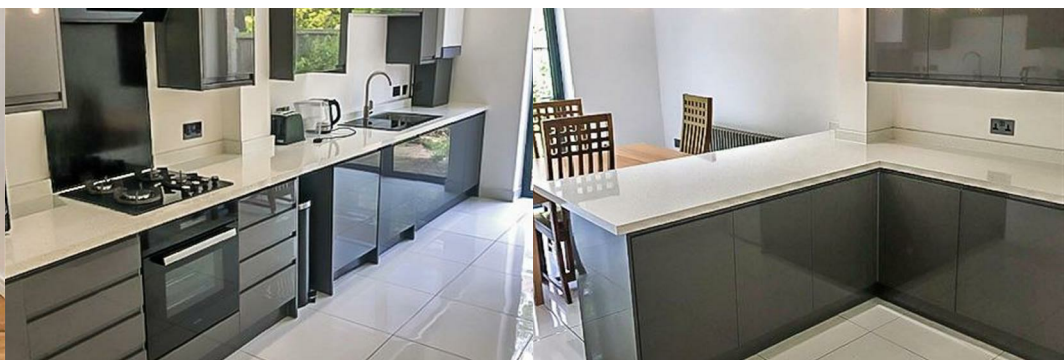
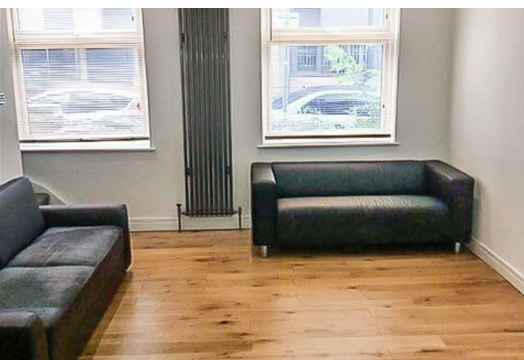
Offers in the region of £850,000



MORDEN LIVING!

HOWSE-GROUP PRESENT TO THE MARKET THIS STUNNING THREE STOREY THREE BEDROOM PROPERTY LOCATED IN ISLE OF DOGS E14. CONVENIENTLY LOCATED THE PROPERTY HAS GREAT ACCESS TO CANARY WHARF AND TO THE CITY. THIS MORDEN THREE BEDROOM PROPERTY BOASTS MANY FEATURES WHICH INCLUDES; DOUBLE GLAZING AND GAS CENTRAL HEATING, TO THE GROUND FLOOR A SPACIOUS LOUNGE LEADING ON TO AN INTERGRATED KITCHEN/DINER AND BI-FOLD DOORS TO GARDEN. TO THE FIRST FLOOR TWO DOUBLE BEDROOMS AND W.C. TO THE SECOND FLOOR A LOFT CONVERTED MASTER BEDROOM WITH A SHOWER ROOM. EXTERNALLY TO THE FRONT, SIDE ACCESS TO THE REAR GARDEN.

CALL NOW TO ARRANGE A VIEWING 01992761986



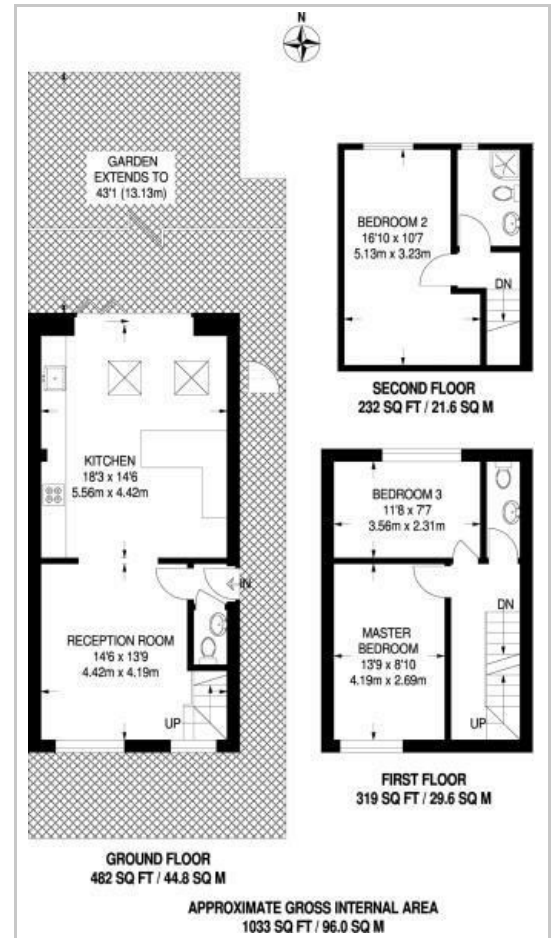
- ENTRANCE HALL
- DOWNSTAIRS WC
- LOUNGE
- KITCHEN/DINER
- BEDROOM 1
- BEDROOM 2
- BEDROOM 3
- TOILET
- SHOWER ROOM
- GARDEN



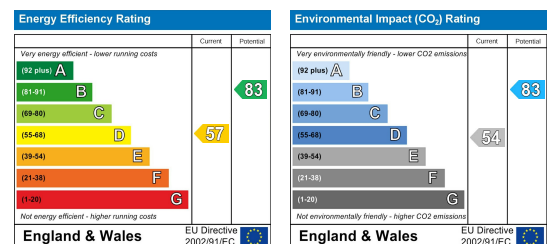
Area Map



Floor Plans



Energy Efficiency Graph



These particulars, whilst believed to be accurate are set out as a general outline only for guidance and do not constitute any part of an offer or contract. Intending purchasers should not rely on them as statements of representation of fact, but must satisfy themselves by inspection or otherwise as to their accuracy. No person in this firm's employment has the authority to make or give any representation or warranty in respect of the property.