



## Mandeville Court

, London, E4 8JB

Asking price £225,000



**CHAIN FREE!**

HOWSE are delighted to offer for sale! This first floor ONE bedroom flat located on a popular development in South Chingford. Being close to Chingford mount which boasts a selection of shopping and transport facilities this property is ideally situated. Boasting many features which include; double glazing, double bedroom fitted kitchen, bathroom and lounge. Externally the property is surrounded by communal gardens and also come with an allocated parking bay. A perfect first time buyers purchase or a buy to let investor.

Call now to arrange a viewing 01992761 286

internal photo's to follow.

## ENTRANCE HALL

LOUNGE 12'09 x 9'01 (3.89m x 2.77m)

KITCHEN 7'05 x 8'03 (2.26m x 2.51m)

MASTER BEDROOM 10'05 x 7'10 (3.18m x 2.39m)

BATHROOM 5'00 x 6'05 (1.52m x 1.96m)

COMMUNAL GARDENS

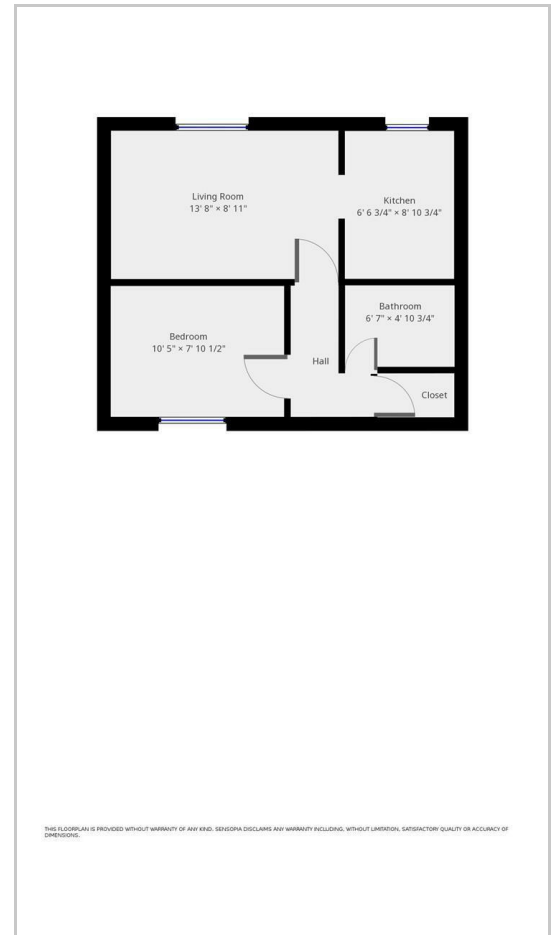
ALLOCATED PARKING



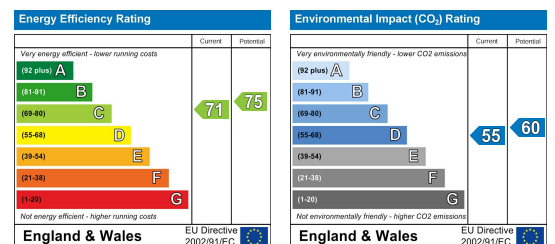
## Area Map



## Floor Plans



## Energy Efficiency Graph



These particulars, whilst believed to be accurate are set out as a general outline only for guidance and do not constitute any part of an offer or contract. Intending purchasers should not rely on them as statements of representation of fact, but must satisfy themselves by inspection or otherwise as to their accuracy. No person in this firm's employment has the authority to make or give any representation or warranty in respect of the property.



01992761986



info@howse-group.com



First Floor 480, Larkshall Road, Highams Park, London, E4 9HH