



Deer Leap Grove

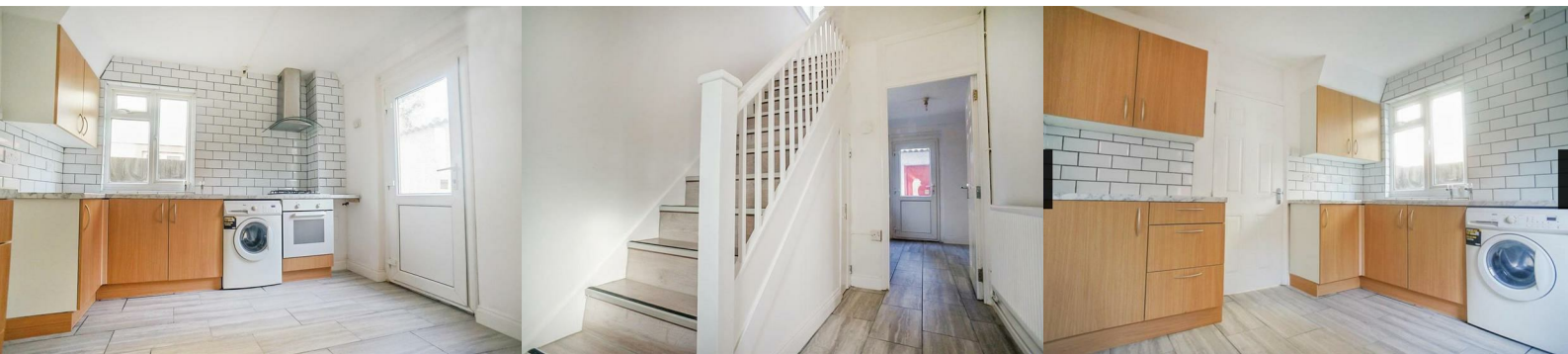
, London, E4 7RU

Offers in excess of £360,000



CASH BUYERS ONLY!

HOWSE are delighted to offer for sale! This THREE BEDROOM PRC built semi detached property located in North Chingford. Recently refurbished throughout this property offers spacious accommodation and potential. Boasting many features which includes; Double glazing and gas central heating. On the ground floor two reception rooms and a modern fitted kitchen. To the first floor three bedrooms serviced by a shower room. Externally to the rear an approx. 50ft garden. This property is an ideal purchase for a buy to let investor looking for a great return. Offering a potential yield of 6% this is one not to miss.



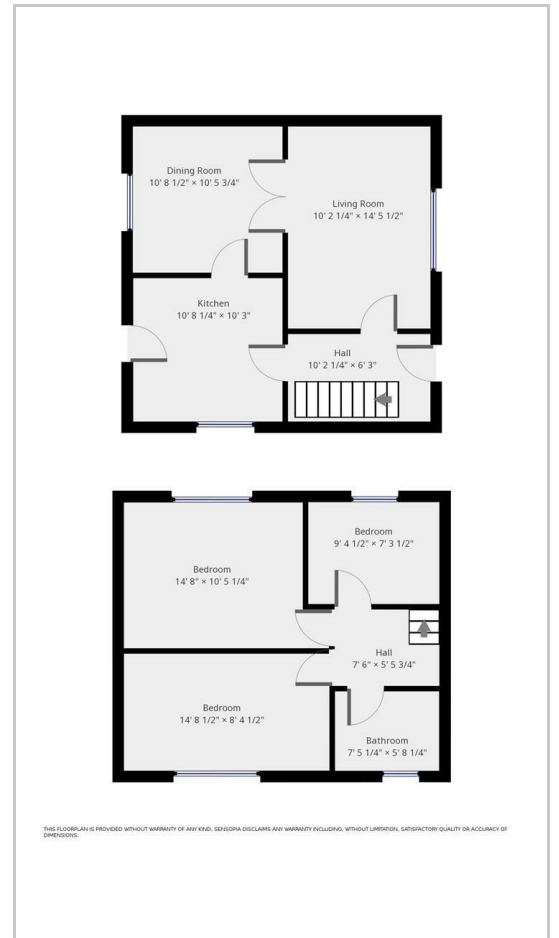
- ENTRANCE HALL
- LOUNGE
- DINER
- KITCHEN
- MASTER BEDROOM
- BEDROOM 2
- BEDROOM 3
- SHOWER ROOM
- GARDEN 70FT APPROX



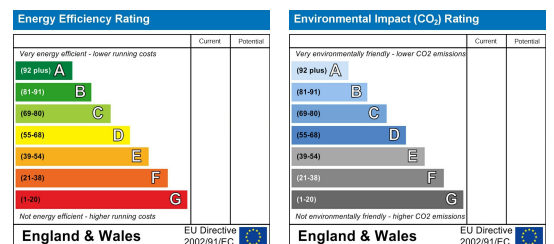
Area Map



Floor Plans



Energy Efficiency Graph



These particulars, whilst believed to be accurate are set out as a general outline only for guidance and do not constitute any part of an offer or contract. Intending purchasers should not rely on them as statements of representation of fact, but must satisfy themselves by inspection or otherwise as to their accuracy. No person in this firm's employment has the authority to make or give any representation or warranty in respect of the property.