

Flat 1 Tower House Castle Street, Rhuddlan, LL18 5AB

£127,000

 2  1  1  D

EPC - D66

Council Tax Band - B

Tenure - Leasehold

Castle Street, Rhuddlan

2 Bedrooms - Flat

Located on Castle Street, this unique ground floor apartment offers outstanding rear views looking over the river Clwyd and the green surroundings. The accommodation affords the entrance hallway, modern shower room, lounge with French doors to the rear patio, modern two tone fitted kitchen plus two bedrooms. Having double glazing, gas central heating and a split level rear garden. This stunning apartment is close to all Village amenities as well as having various walks with so much history. EPC is TBC. Leasehold. Council tax band B.



Accommodation

Double glazed front door giving access into the hallway.

Hallway

Having laminate flooring, radiator, navy fronted modern units with shelving and concealed fridge freezer, glazed door leads into the lounge.

Lounge

12'1" x 13'9" (3.70 x 4.20)

This light and airy room has the continuation of the laminate flooring, radiator, T.v connection, walk in storage cupboard with light and shelving, double glazed French doors that provides access to the rear patio and offers spectacular views over the River Elwy.

Kitchen

11'5" x 9'0" (3.50 x 2.76)

Fitted with two tone modern units - the wall units being in chalk white, navy fronted base & drawer units, integral washing machine, double built in oven, gas hob, breakfast bar, worktop surfaces with matching up-stands, modern splash-backs, single drainer sink with mixer tap, double glazed side window, wall mounted boiler, inset spot lighting, vinyl flooring, double glazed window and rear door.

Bedroom 1

17'0" x 9'3" (5.20 x 2.84)

Having two double glazed front windows, radiator and T.v connection.

Bedroom 2

10'8" x 9'2" (3.26 x 2.81)

With radiator and two double glazed front windows.

Shower Room

6'5" x 6'0" (1.98 x 1.85)

Comprising of a push button toilet, modern wall hung vanity wash hand basin with grey fronted drawer units and adjacent is a matching long storage cupboard with mirror, shower enclosure with white glitter back panels, wall tiles, vinyl flooring, heated towel rail and double glazed rear window.



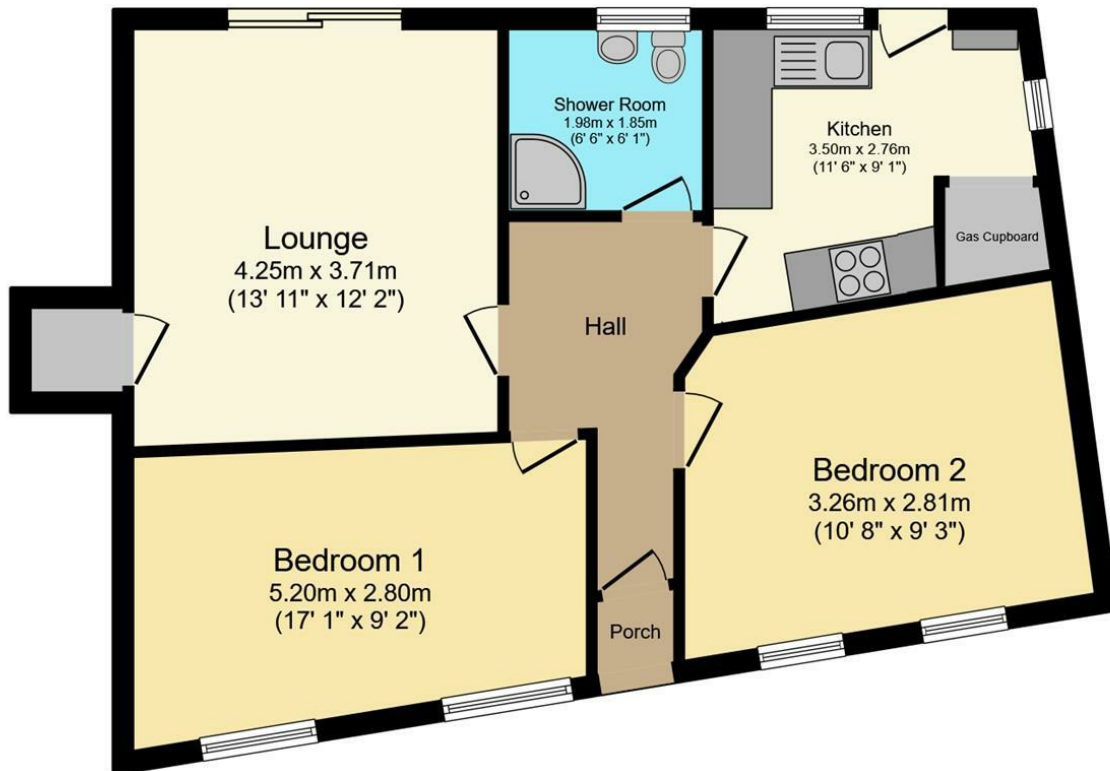
Outside

The rear garden offers a crazy paved patio with lower level patio and benefits from having amazing views over the River Elwy and beyond countryside.

Directions

Proceed onto Vale Road that leads onto Rhuddlan Road. Continue towards Rhuddlan and follow the signs into Rhuddlan Village. Continue towards the bridge and turn left onto Castle Street. This flat can be located on your right just before Rhuddlan Castle.





Floor Plan
 Floor area 62.5 m² (673 sq.ft.)

TOTAL: 62.5 m² (673 sq.ft.)

This floor plan is for illustrative purposes only. It is not drawn to scale. Any measurements, floor areas (including any total floor area), openings and orientations are approximate. No details are guaranteed, they cannot be relied upon for any purpose and do not form any part of any agreement. No liability is taken for any error, omission or misstatement. A party must rely upon its own inspection(s). Powered by www.Propertybox.io

Energy Efficiency Rating		Current	Potential
Very energy efficient - lower running costs			
(92 plus) A			
(81-91) B			
(69-80) C			
(55-68) D		66	77
(39-54) E			
(21-38) F			
(1-20) G			
Not energy efficient - higher running costs			
England & Wales	EU Directive 2002/91/EC		

Call us on
 01745 369444

Rhyl@williamsestates.com

Agents Note: Whilst every care has been taken to prepare these particulars, they are for guidance purposes only. All measurements are approximate and are for general guidance purposes only and whilst every care has been taken to ensure their accuracy, they should not be relied upon and potential buyers are advised to recheck the measurements themselves.