



House

1 VALE PARK, COLOMENDY INDUSTRIAL ESTATE, RHYL ROAD,

£14,000

FEATURES



williamslettings

0 Bedroom House located in Denbigh

Offered for lease a prominent office suite located on the Colomendy Industrial Estate in Denbigh. The purpose built office suite has one large open plan room which could be partitioned if required, and an additional office. The lease includes electricity, heating and rates. car parking spaces are available on site

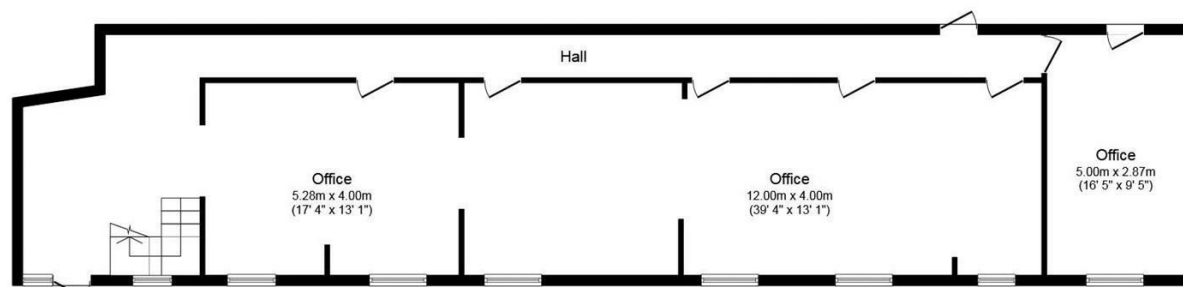
The offices are to be let on a new lease, the terms of lease to be negotiated

Call us on

01745 592616

rhuddlan@williamsestates.com

Council Tax Band



Floor Plan

Total floor area 118.3 sq.m. (1,273 sq.ft.) approx

This plan is for illustration purposes only and may not be representative of the property. Plan not to scale.

Energy Efficiency Rating		Current	Potential
<i>Very energy efficient - lower running costs</i>			
(92 plus) A			
(81-91) B			
(69-80) C			
(55-68) D			
(39-54) E			
(21-38) F			
(1-20) G			
<i>Not energy efficient - higher running costs</i>			
England & Wales		EU Directive	
		2002/91/EC	

Agents Note: Whilst every care has been taken to prepare these particulars, they are for guidance purposes only. All measurements are approximate and are for general guidance purposes only and whilst every care has been taken to ensure their accuracy, they should not be relied upon and potential buyers are advised to recheck the measurements.

williamslettings