



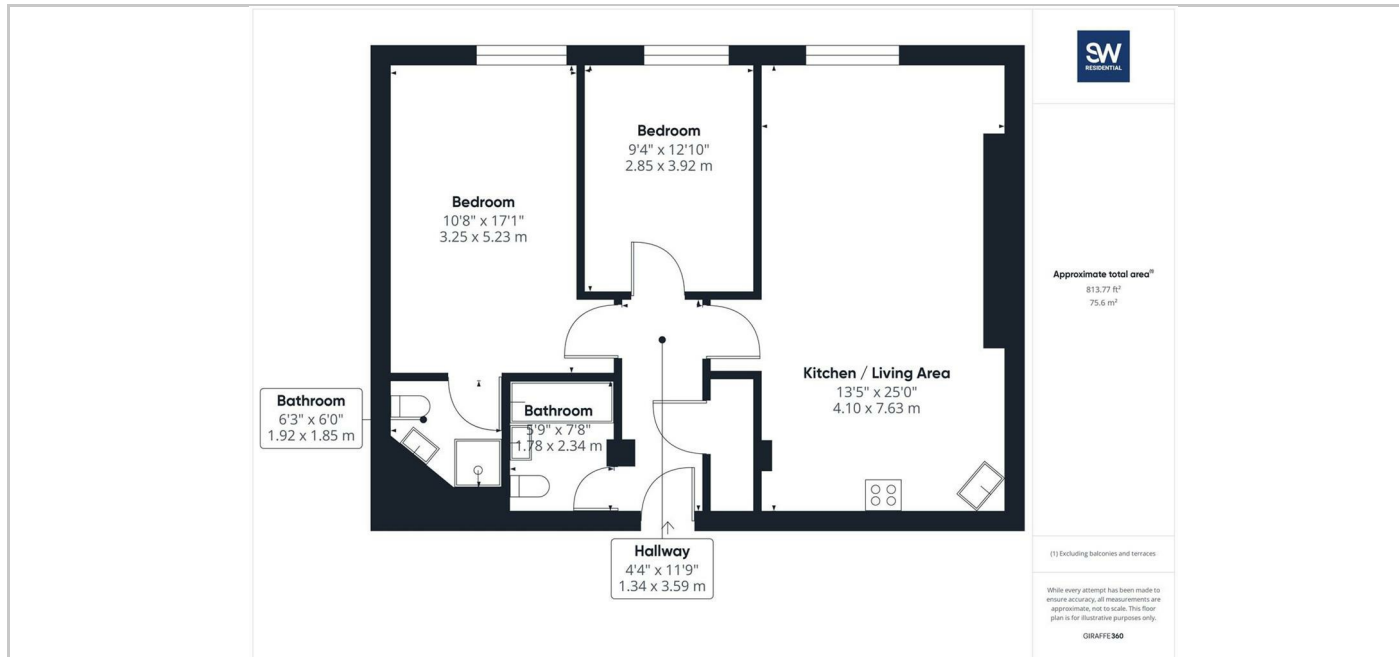
47 City Central - 181838 Wellington Street, Leeds, West Yorkshire, LS1 4EA  
£1,450 PCM

**SW**  
RESIDENTIAL

- Two double bedrooms
- Spacious accommodation
- Furnished
- Council Tax Band E
- Grade II Listed building
- Two bathrooms
- Available now

## THE PROPERTY

A spacious contemporary two bedroom apartment situated on the fifth floor of this popular Grade II Listed Conversion situated on Wellington Street in the heart of the central business district. The accommodation comprises large open plan living room and kitchen, two very good size double bedrooms with en-suite shower to the master bedroom and also a family bathroom. The property is furnished and is available now.



## SITUATION

## Directions

6th Floor Central Square, 29 Wellington Street, West Yorkshire, LS1 4DL  
Tel: 0113 221 6000 Email: residential@sw.co.uk