



28 Beech Walk, Eastfield, Scarborough, North Yorkshire, YO11 3HN

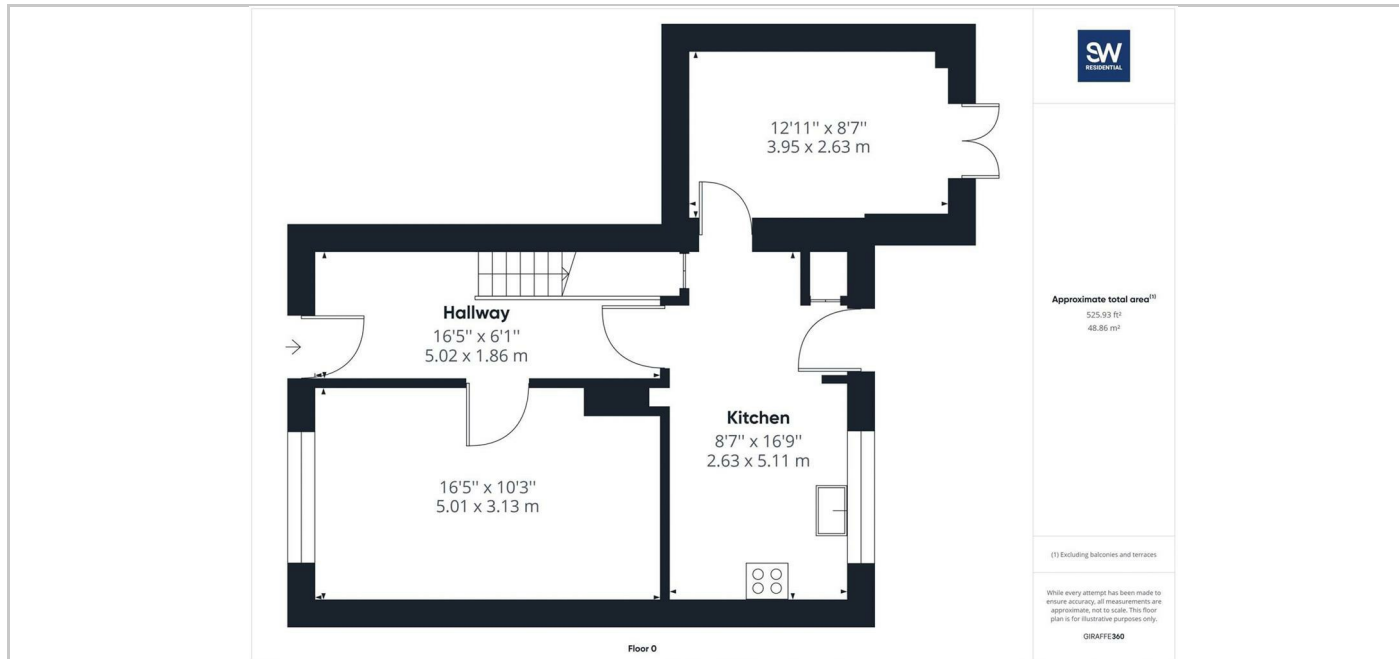
£135,000

SW
RESIDENTIAL

- End Town House
- Spacious lounge
- Playroom/home office
- Contemporary Bathroom
- EPC D
- Popular Residential Location
- Modern dining kitchen
- 3 Bedrooms
- Garage & Gardens
- Council Tax Band A

THE PROPERTY

We are pleased to offer for sale this 3 BEDROOM END TOWN HOUSE home on Beech Walk with GARAGE. The property briefly comprises of an entrance hallway, spacious lounge with window to front and feature electric fire. The dining kitchen is fitted with a good range of modern units, separate playroom with French doors leading onto a decked area and garden beyond. To the first floor are 3 good sized bedrooms and a contemporary bathroom. Externally, there is a lawned garden to the front and rear as well as a decked patio area. To the rear of the property is a garage. The property has gas central heating and double glazed windows throughout. EPC rating D, Council Tax band A. The property is offered for sale with NO ONWARD CHAIN.



SITUATION

Directions