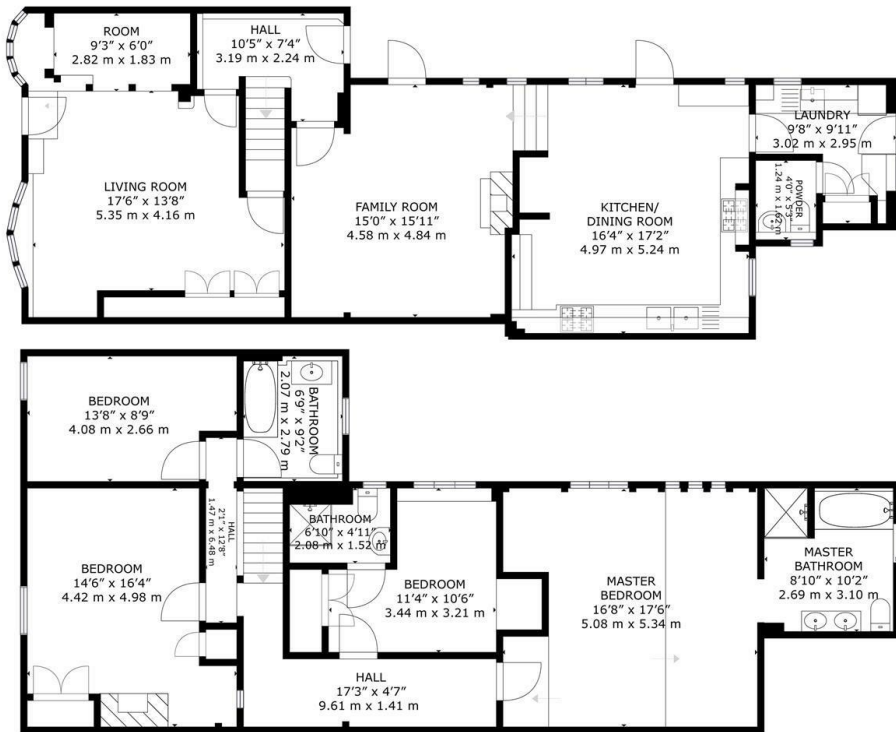




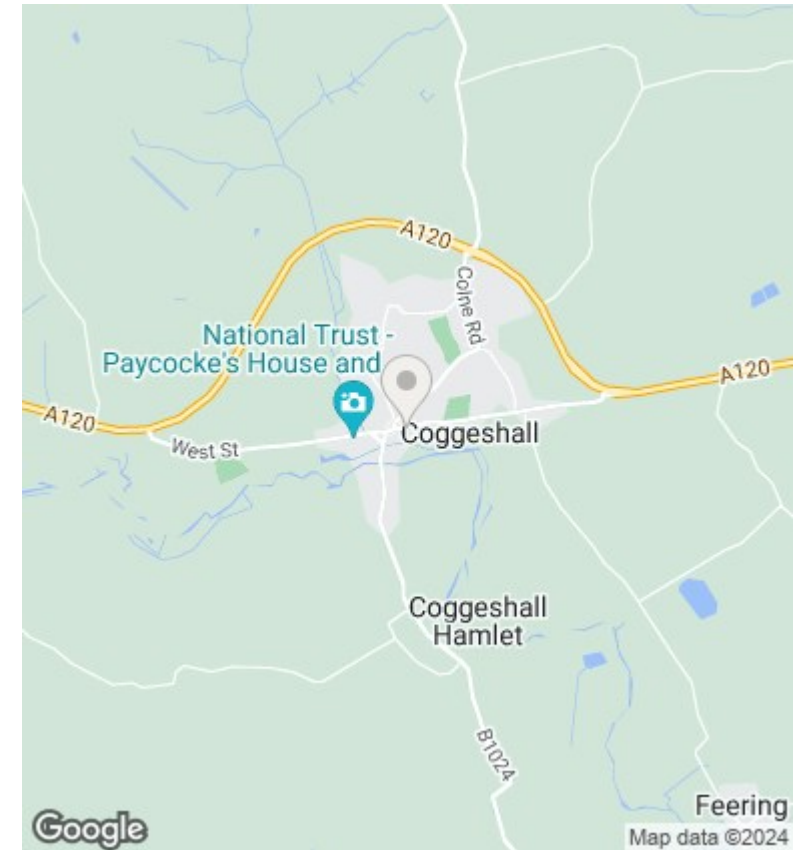
## 10 East Street, Coggeshall, Colchester, Essex, CO6 1SH

£1,800 PCM

- Available now
- Two Reception Rooms
- Enclosed Rear Garden
- Grade Two Listed
- Viewing Advised
- Parking & Cart lodge to Rear
- Four Bedrooms



GROSS INTERNAL AREA  
 FLOOR 1: 1001 sq.ft, FLOOR 2: 1108 sq.ft  
 TOTAL: 2109 sq.ft  
SIZES AND DIMENSIONS ARE APPROXIMATE, ACTUAL MAY VARY.



**Directions**

**Viewings**

Viewings by arrangement only. Call 01376563656 to make an appointment.

**Council Tax Band**

F

**EPC Rating:**

| Energy Efficiency Rating                           |                         |           |
|--|-------------------------|-----------|
|  | Current                 | Potential |
| <i>Very energy efficient - lower running costs</i> |                         |           |
| (92 plus) <b>A</b>                                 |                         |           |
| (81-91) <b>B</b>                                   |                         |           |
| (69-80) <b>C</b>                                   |                         |           |
| (55-68) <b>D</b>                                   |                         |           |
| (39-54) <b>E</b>                                   |                         |           |
| (21-38) <b>F</b>                                   |                         |           |
| (1-20) <b>G</b>                                    |                         |           |
| <i>Not energy efficient - higher running costs</i> |                         |           |
| <b>England &amp; Wales</b>                         | EU Directive 2002/91/EC |           |