

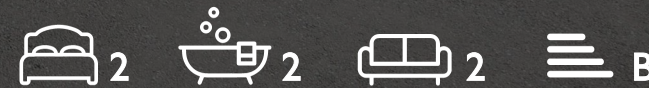
WE VALUE



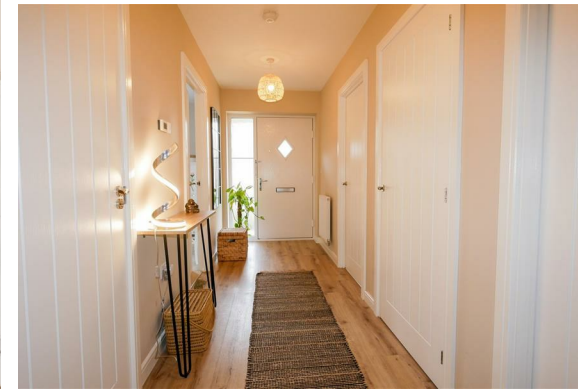
YOUR HOME



Cornflower Drive, Cholsey
£510,000

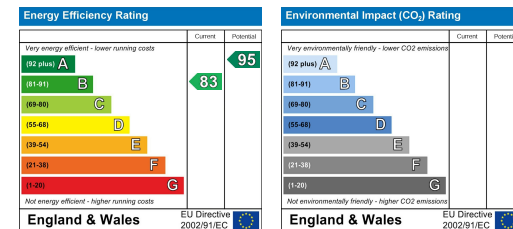


If you are looking for single storey living, this beautifully presented detached bungalow which is only 2 years old, offers a comfortable and modern living experience with a bright open-plan kitchen/dining room and lounge both with double doors opening up to the good sized, enclosed rear garden. Featuring two double bedrooms, a family bathroom & en-suite, and both off-street parking and a garage. This property is perfect for those looking for a stylish home in this popular village, close to amenities and the village train station.



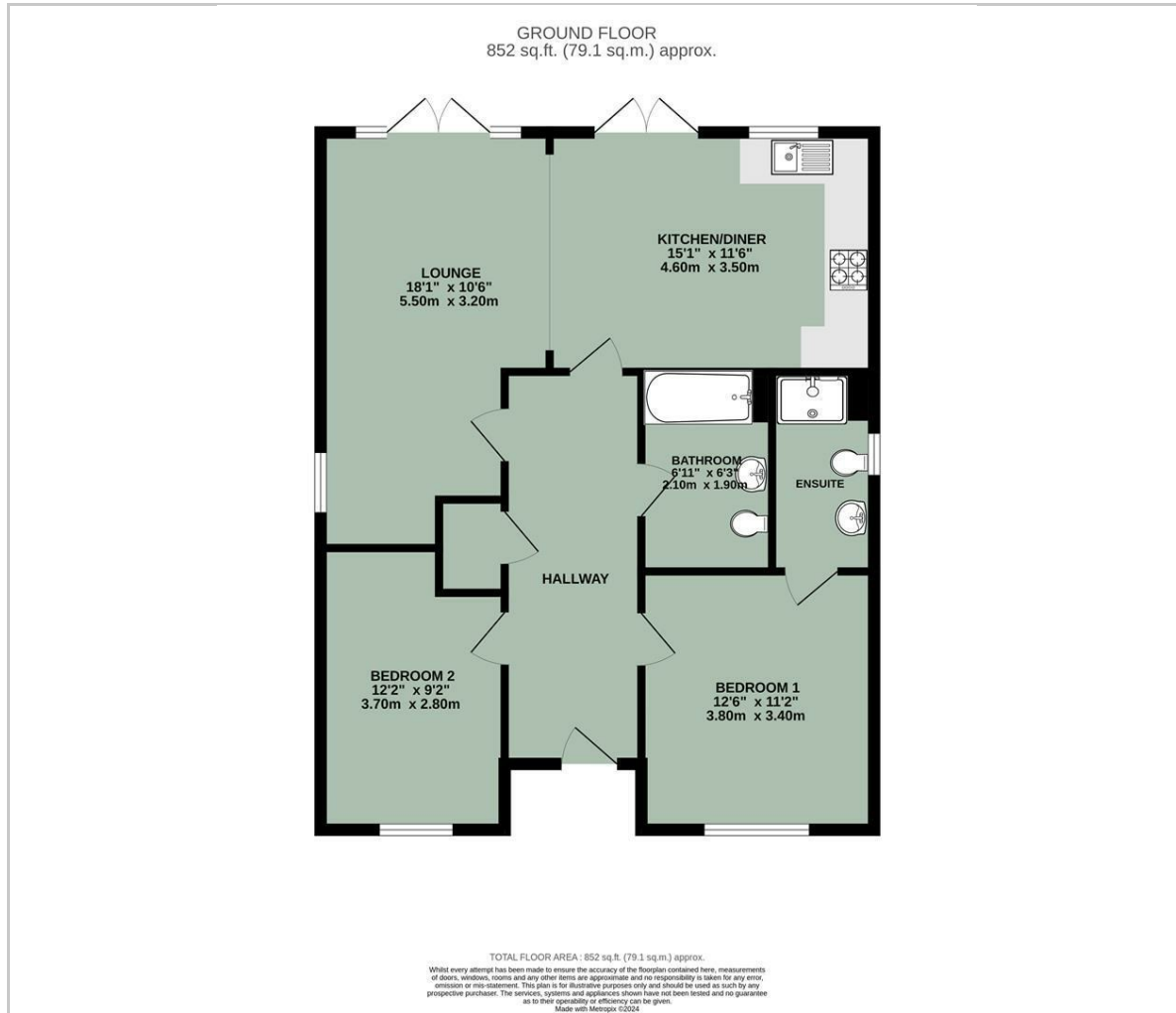


- DETACHED BUNGALOW
- BEAUTIFULLY PRESENTED THROUGHOUT
- TWO DOUBLE BEDROOMS
- OPEN PLAN KITCHEN/DINER
- EN-SUITE TO MAIN BEDROOM
- SPACIOUS LOUNGE
- GENEROUS ENCLOSED REAR GARDEN
- GARAGE
- OFF-STREET PARKING

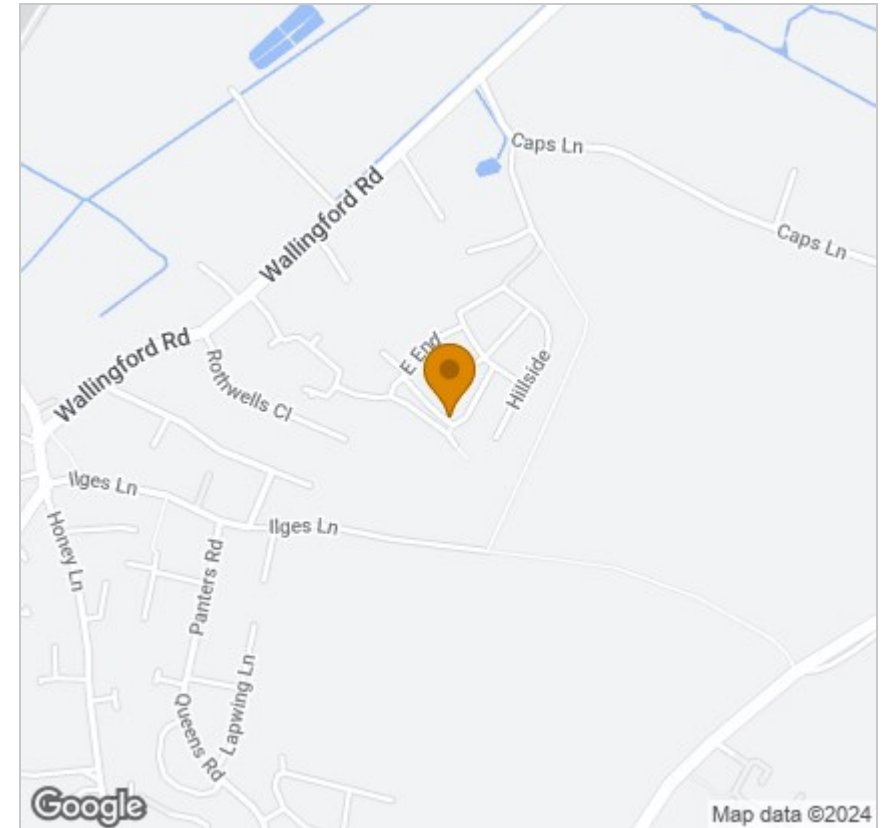


Energy Efficiency Graph

Floor Plan



Area Map



Viewing

Please contact our In House Sales & Lettings Office on 01491 839999 opt.1 if you wish to arrange a viewing appointment for this property or require further information.

These particulars, whilst believed to be accurate are set out as a general outline only for guidance and do not constitute any part of an offer or contract. Intending purchasers should not rely on them as statements of representation of fact, but must satisfy themselves by inspection or otherwise as to their accuracy. No person in this firms employment has the authority to make or give any representation or warranty in respect of the property.

28 St Martins Street, Wallingford, Oxfordshire, OX10 0AL
Tel: 01491 839999 opt.1 Email: sales@inhouseestateagents.co.uk www.inhouseestateagents.co.uk