

WE VALUE



YOUR HOME



Portcullis Drive, Wallingford
Asking Price £325,000

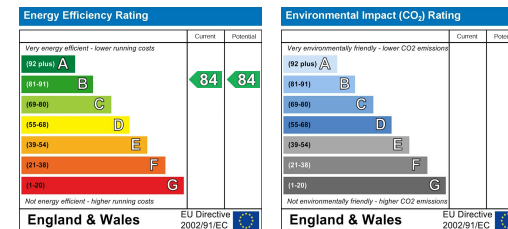


If you love the idea of a modern open-plan lifestyle, this well-presented coach house could be the perfect property for you. Located within the Winterbrook area of Wallingford, just a short distance from the town and pretty countryside, this spacious property features two double bedrooms with an en-suite and built-in storage to the main, a bathroom and a generous open-plan kitchen living space with dual aspect windows allowing for plenty of natural light and views out across the communal green space. With both off-street parking and a garage as well as handy external storage, this stylish coach house is perfect for those wanting all the convenience of nearby amenities whilst still being close to the countryside.



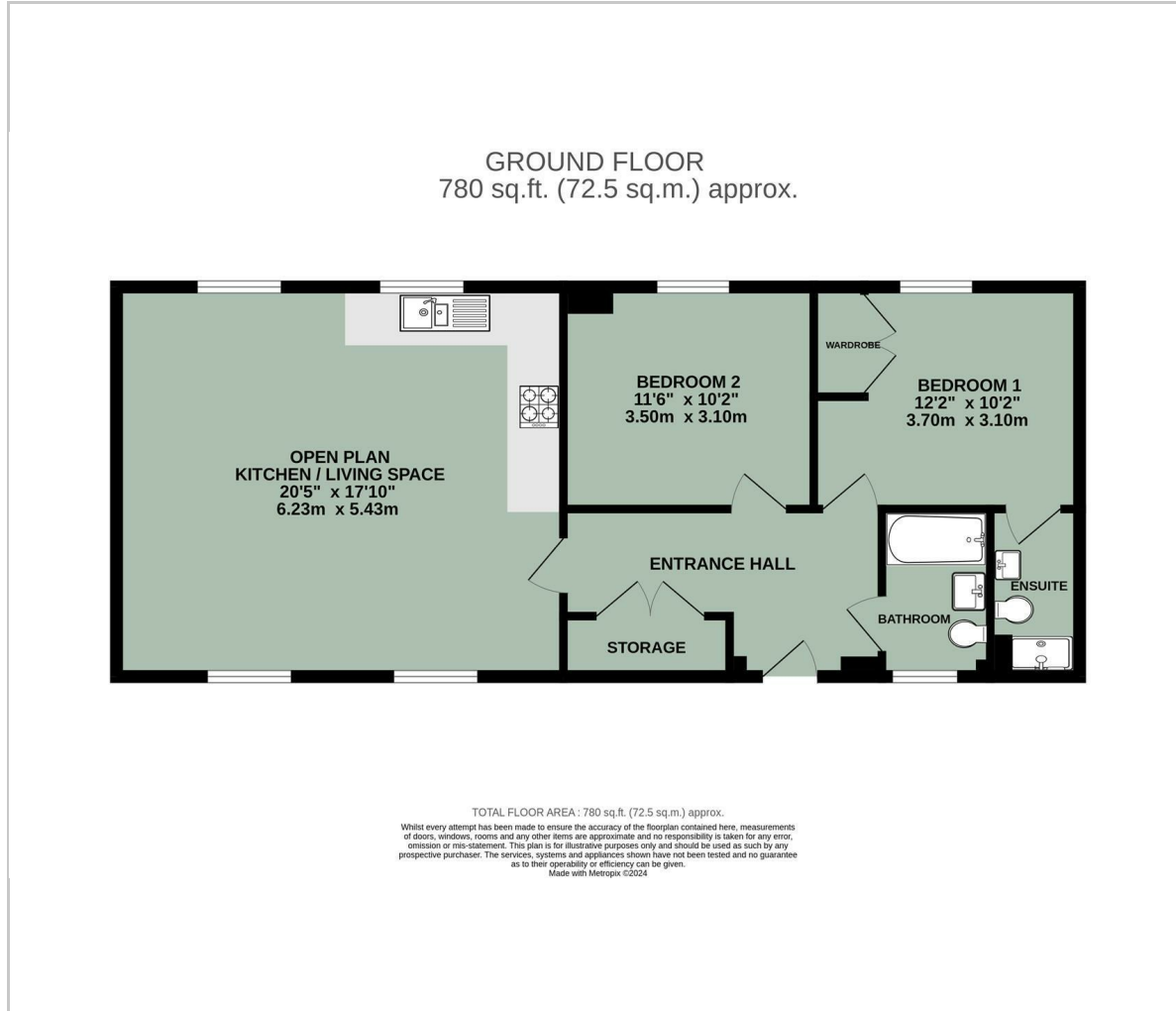


- SPACIOUS OPEN PLAN KITCHEN/LIVING AREA
- WELL-PRESENTED THROUGHOUT
- TWO DOUBLE BEDROOMS
- EN-SUITE & BATHROOM
- OFF-STREET PARKING
- GARAGE
- INTERNAL & EXTERNAL STORAGE
- CLOSE TO AMENITIES & COUNTRYSIDE WALKS



Energy Efficiency Graph

Floor Plan



Area Map



Viewing

Please contact our In House Sales & Lettings Office on 01491 839999 opt.1 if you wish to arrange a viewing appointment for this property or require further information.

These particulars, whilst believed to be accurate are set out as a general outline only for guidance and do not constitute any part of an offer or contract. Intending purchasers should not rely on them as statements of representation of fact, but must satisfy themselves by inspection or otherwise as to their accuracy. No person in this firm's employment has the authority to make or give any representation or warranty in respect of the property.

28 St Martins Street, Wallingford, Oxfordshire, OX10 0AL
Tel: 01491 839999 opt.1 Email: sales@inhouseestateagents.co.uk www.inhouseestateagents.co.uk