

WE VALUE



YOUR HOME



Warborough Road, Shillingford
Offers Over £475,000

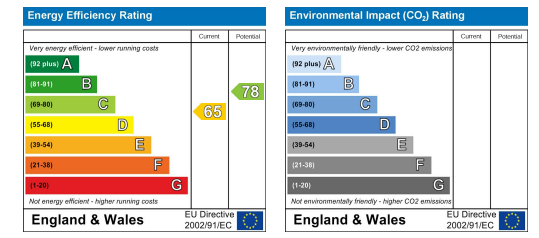
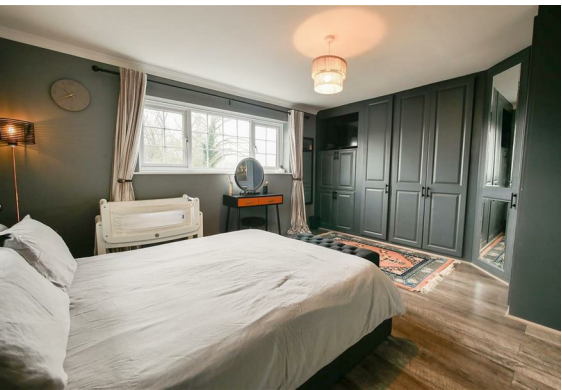


Welcome to Sheridan Cottage... From the moment you walk through the front door into the entrance hall, you immediately get a sense of home thanks to the chic style and stunning interior touches. Designed for space and comfort, the dual aspect lounge looks out over the manicured garden and features an open fireplace, perfect for cosy evenings, and with a generous open-plan style kitchen/diner opening up to the paved courtyard with a bespoke barbecue area, this home is perfect for entertaining family and friends! With a cloakroom, a dual aspect main bedroom with plenty of built-in storage and two additional bedrooms, one of which can be repurposed into a study if preferred, this beautiful home with its off-street parking and garage, all just a stones throw from the village amenities and tranquil countryside walks is a house you'll be proud to call home.



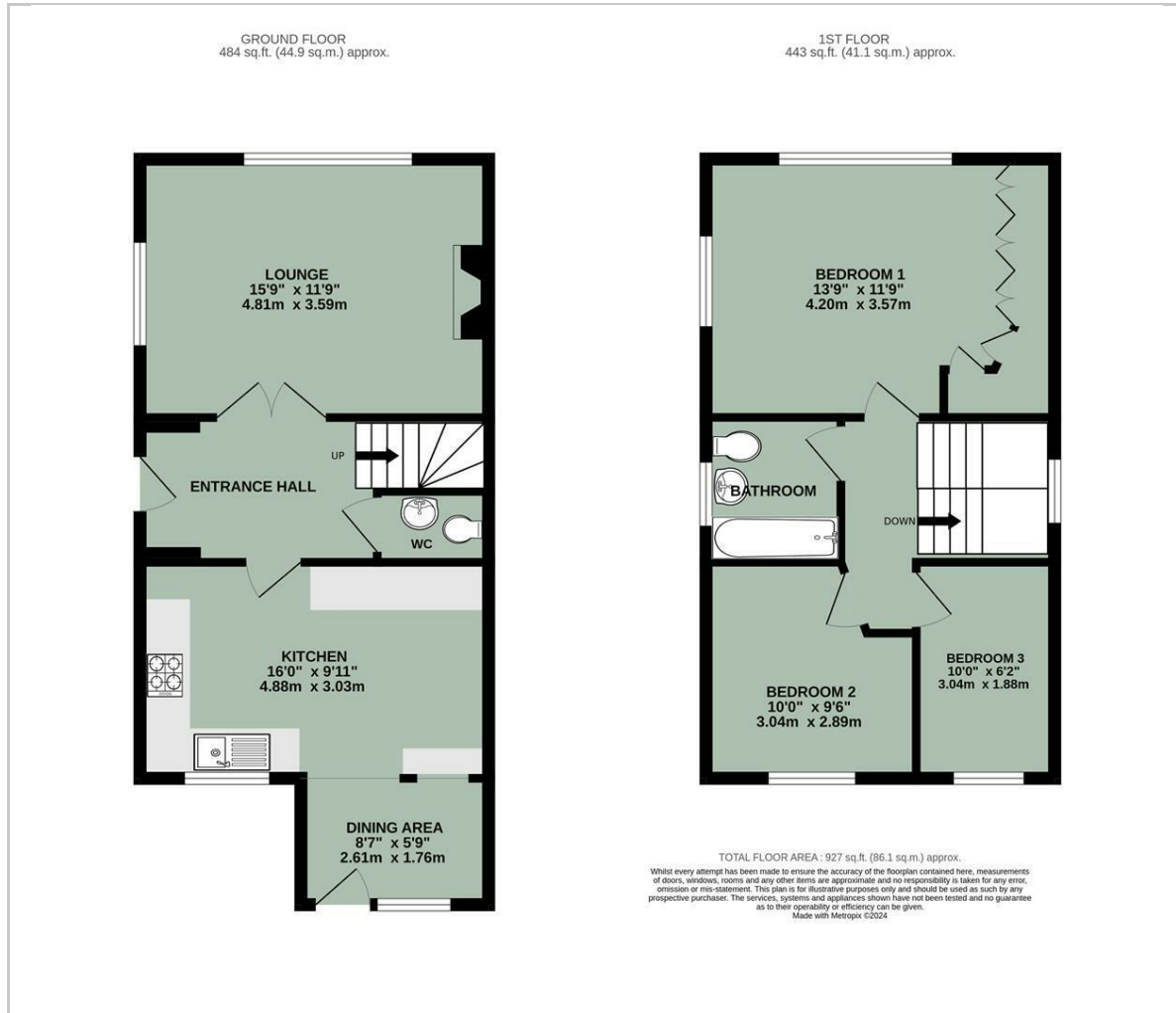


- BEAUTIFULLY PRESENTED SEMI-DETACHED COTTAGE
- OPEN-PLAN STYLE KITCHEN/DINER
- GENEROUS DUAL ASPECT LOUNGE WITH OPEN FIREPLACE
- CHIC AND STYLISH INTERIOR THROUGHOUT
- THREE BEDROOMS WITH BUILT-IN WARDROBES TO THE MAIN
- STUNNING ENCLOSED FRONT GARDEN
- COURTYARD WITH BESPOKE CHIMINEA BARBECUE
- OFF-STREET PARKING FOR TWO VEHICLES
- GARAGE TO THE REAR
- CLOSE TO TRANSPORT LINKS & VILLAGE AMENITIES



Energy Efficiency Graph

Floor Plan



Area Map



Viewing

Please contact our In House Sales & Lettings Office on 01491 839999 opt.1 if you wish to arrange a viewing appointment for this property or require further information.

These particulars, whilst believed to be accurate are set out as a general outline only for guidance and do not constitute any part of an offer or contract. Intending purchasers should not rely on them as statements of representation of fact, but must satisfy themselves by inspection or otherwise as to their accuracy. No person in this firm's employment has the authority to make or give any representation or warranty in respect of the property.

28 St Martins Street, Wallingford, Oxfordshire, OX10 0AL
Tel: 01491 839999 opt.1 Email: sales@inhouseestateagents.co.uk www.inhouseestateagents.co.uk