

WE VALUE



YOUR HOME



Station Road, Wallingford
Offers Over £200,000

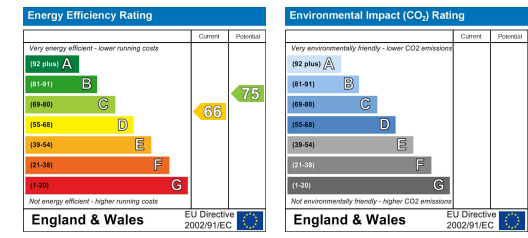
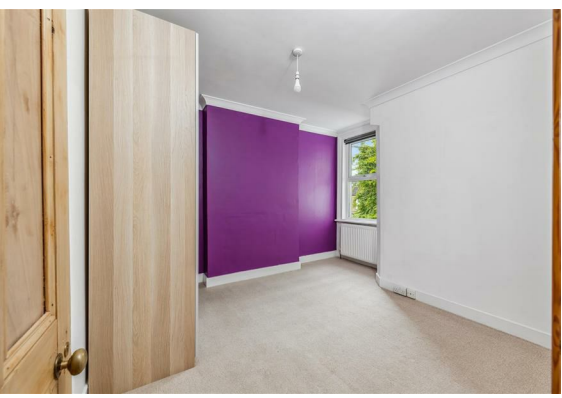


If the modern apartment lifestyle appeals to you then this spacious, one-bedroom property could be ideal. Occupying the first floor of this Victorian conversion and just a short stroll from Wallingford's historic town centre, parks and amenities, this apartment comes with its own decked terrace, gas central heating and double glazing. Its long lease and great location makes this the perfect property for investors, first time buyers or those looking for a handy lock and leave.



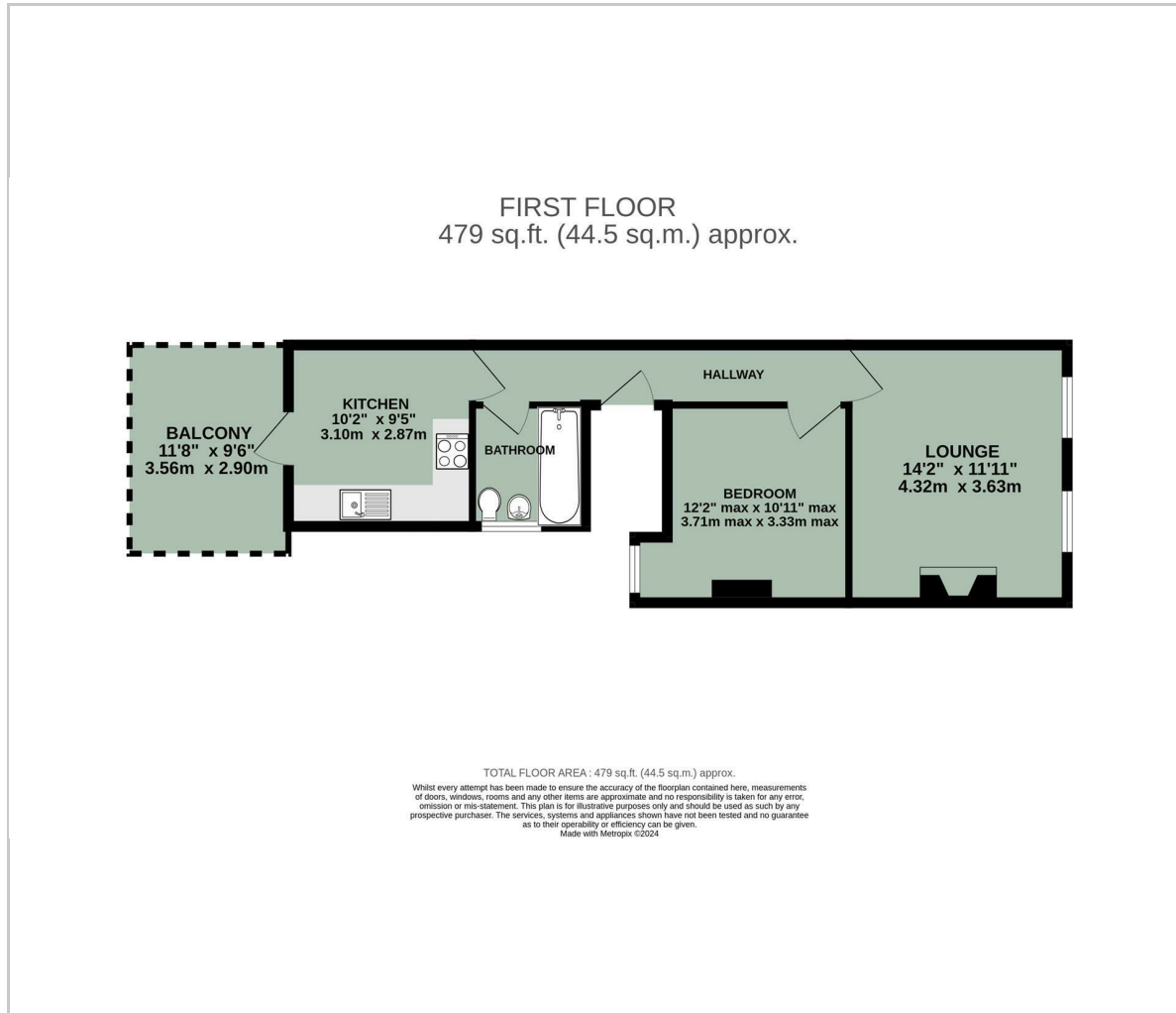


- VICTORIAN CONVERSION WITH CHARACTER FEATURES
- LONG LEASE LENGTH
- PRIVATE DECKED TERRACE
- GOOD SIZED ROOMS
- SHARE OF FREEHOLD
- TOWN CENTRE & PARKS WITHIN WALKING DISTANCE
- IDEAL INVESTMENT OR FOR FIRST TIME BUYERS
- FIRST FLOOR APARTMENT
- NO ONWARD CHAIN



Energy Efficiency Graph

Floor Plan



Area Map



Viewing

Please contact our In House Sales & Lettings Office on 01491 839999 opt.1 if you wish to arrange a viewing appointment for this property or require further information.

These particulars, whilst believed to be accurate are set out as a general outline only for guidance and do not constitute any part of an offer or contract. Intending purchasers should not rely on them as statements of representation of fact, but must satisfy themselves by inspection or otherwise as to their accuracy. No person in this firm's employment has the authority to make or give any representation or warranty in respect of the property.

28 St Martins Street, Wallingford, Oxfordshire, OX10 0AL
Tel: 01491 839999 opt.1 Email: sales@inhouseestateagents.co.uk www.inhouseestateagents.co.uk