

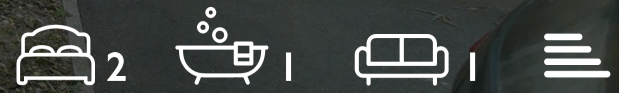
WE VALUE



YOUR HOME



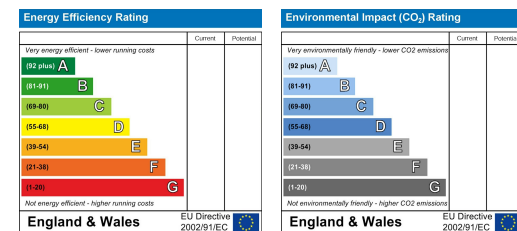
Smith Court, Wallingford
£1,250 PCM



Located just a short stroll from Wallingford's many amenities, this stylish ground floor apartment is perfectly designed for modern day living. Featuring two double bedrooms with built-in storage and an en-suite to the master, a spacious open-plan living area and kitchen with integral appliances. To the outside space, the private patio area is accessed via the French doors and with allocated parking in the resident's parking area. Available from May 2024 for long-term let, unfurnished.

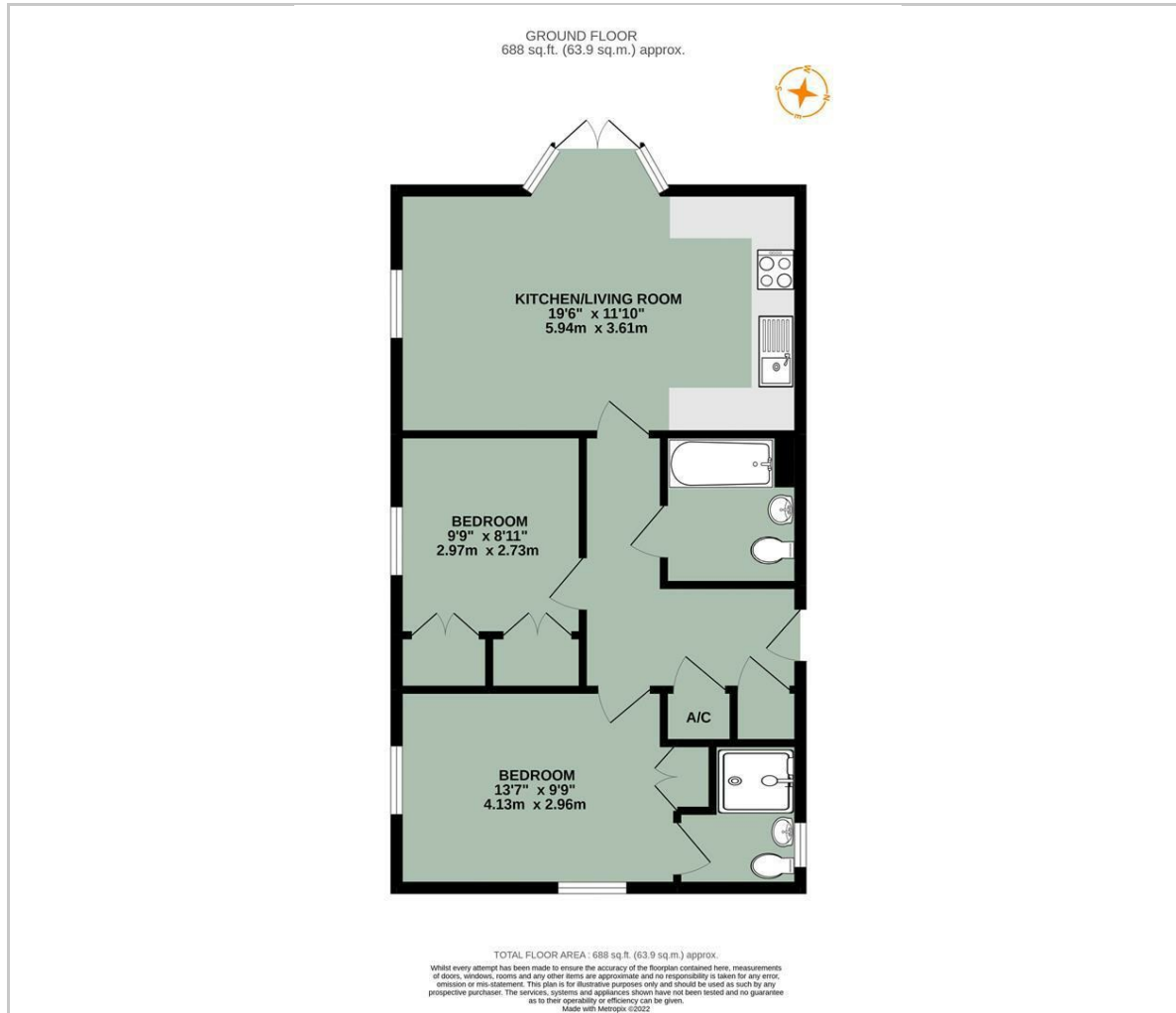


- MODERN GROUND FLOOR APARTMENT
- TWO DOUBLE BEDROOMS WITH BUILT-IN STORAGE
- EN-SUITE & BATHROOM
- OPEN PLAN LIVING AREA & KITCHEN
- INTEGRAL APPLIANCES
- ALLOCATED PARKING
- PATIO AREA
- AVAILABLE FROM MAY 2024, UN-FURNISHED FOR LONG-TERM LET



Energy Efficiency Graph

Floor Plan



Viewing

Please contact our In House Sales & Lettings Office on 01491 839999 opt.1
if you wish to arrange a viewing appointment for this property or require further information.

These particulars, whilst believed to be accurate are set out as a general outline only for guidance and do not constitute any part of an offer or contract. Intending purchasers should not rely on them as statements of representation of fact, but must satisfy themselves by inspection or otherwise as to their accuracy. No person in this firm's employment has the authority to make or give any representation or warranty in respect of the property.

28 St Martins Street, Wallingford, Oxfordshire, OX10 0AL
Tel: 01491 839999 opt.1 Email: sales@inhouseestateagents.co.uk www.inhouseestateagents.co.uk

Area Map

