

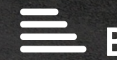
WE VALUE



YOUR HOME



Agatha Christie Way, Cholsey
Asking Price £395,000

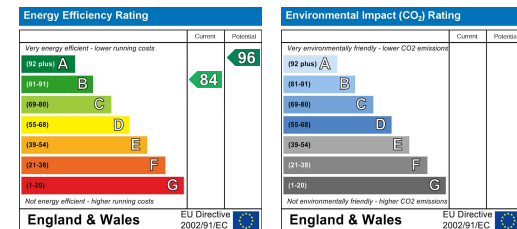


Well-presented throughout, this three-bedroom property features a contemporary and stylish decor offering a relaxing and fresh living space. With an en-suite to the master bedroom, built-in storage, a kitchen/diner with integral appliances, a cloakroom, off-street parking for two vehicles and a west-facing landscaped garden complete with a garden room, all within close proximity to excellent transport links and amenities. This impressive property is ideal for those looking for a home which is accommodating to modern day living in a village location.



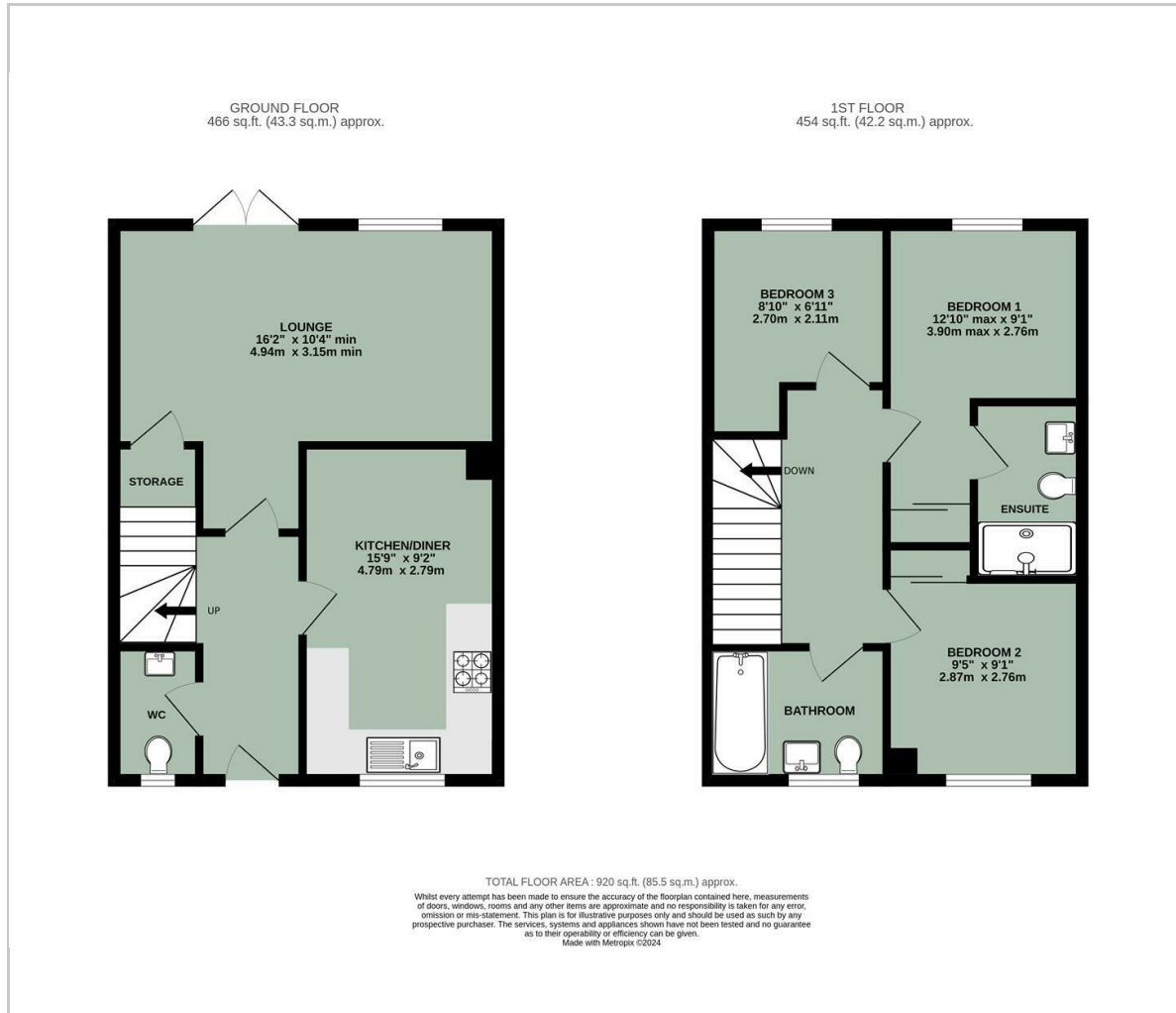


- WELL-PRESENTED THROUGHOUT
- EN-SUITE TO THE MAIN BEDROOM
- SPACIOUS KITCHEN/DINER & LOUNGE
- WEST-FACING GARDEN WITH GARDEN ROOM
- OFF-STREET PARKING FOR TWO VEHICLES
- FITTED KITCHEN WITH INTEGRATED APPLIANCES
- CLOAKROOM
- BUILT-IN STORAGE
- CLOSE TO AMENITIES & TRANSPORT LINKS



Energy Efficiency Graph

Floor Plan



Area Map



Viewing

Please contact our In House Sales & Lettings Office on 01491 839999 opt.1 if you wish to arrange a viewing appointment for this property or require further information.

These particulars, whilst believed to be accurate are set out as a general outline only for guidance and do not constitute any part of an offer or contract. Intending purchasers should not rely on them as statements of representation of fact, but must satisfy themselves by inspection or otherwise as to their accuracy. No person in this firm's employment has the authority to make or give any representation or warranty in respect of the property.

28 St Martins Street, Wallingford, Oxfordshire, OX10 0AL
Tel: 01491 839999 opt.1 Email: sales@inhouseestateagents.co.uk www.inhouseestateagents.co.uk