

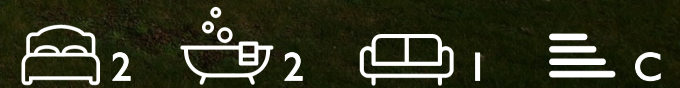
WE VALUE



YOUR HOME



Walter Bigg Way, Wallingford  
Asking Price £260,000

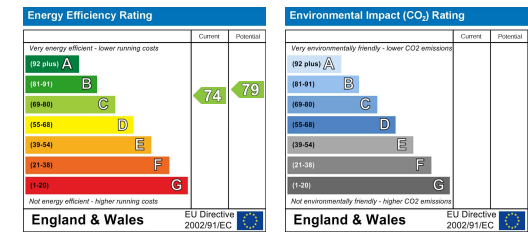
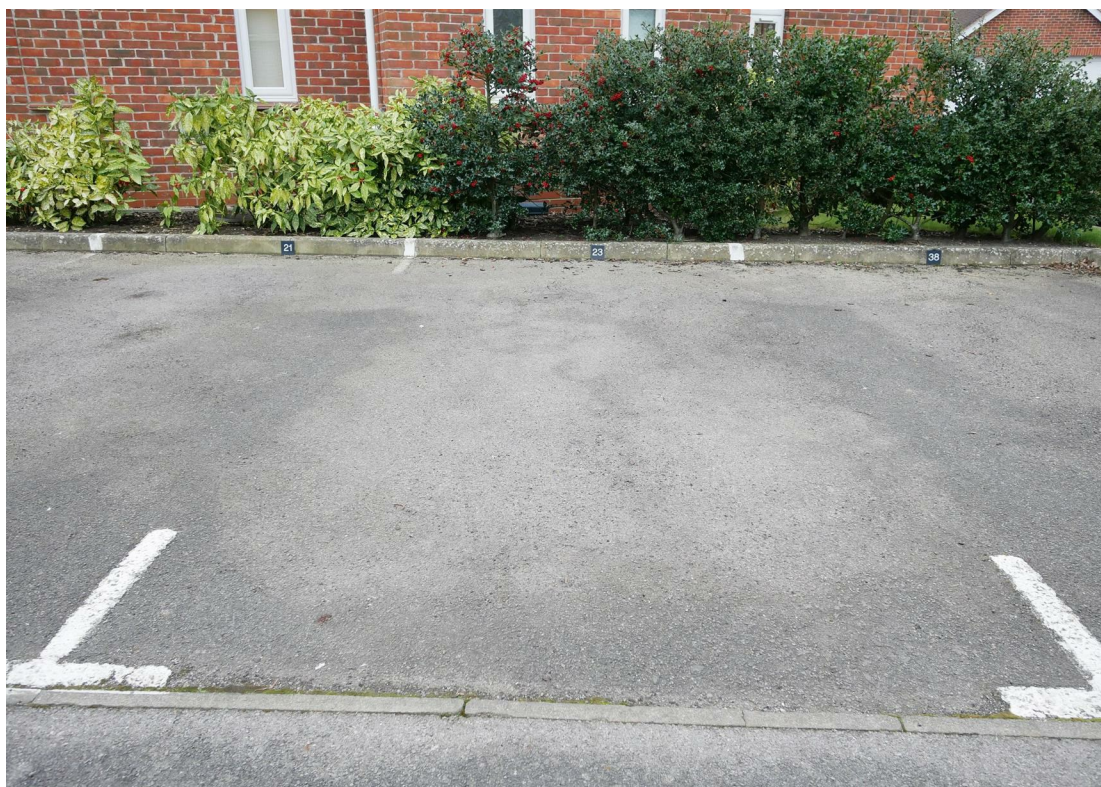
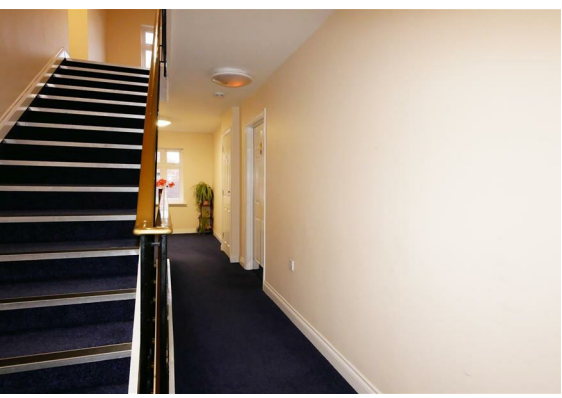


Located within a stone's throw of Wallingford's many amenities and parks, this well-presented top floor apartment has a spacious layout as well as ample built-in storage. Featuring two good sized bedrooms with an en-suite to the main, a dual aspect lounge, a fitted kitchen with water softener and appliances included, and a bathroom. With allocated parking and well-kept communal gardens to enjoy, this apartment, which is coming to the market with no onward chain is ideal for those looking for a practical property within walking distance of shops, picturesque riverside walks and good transport links.



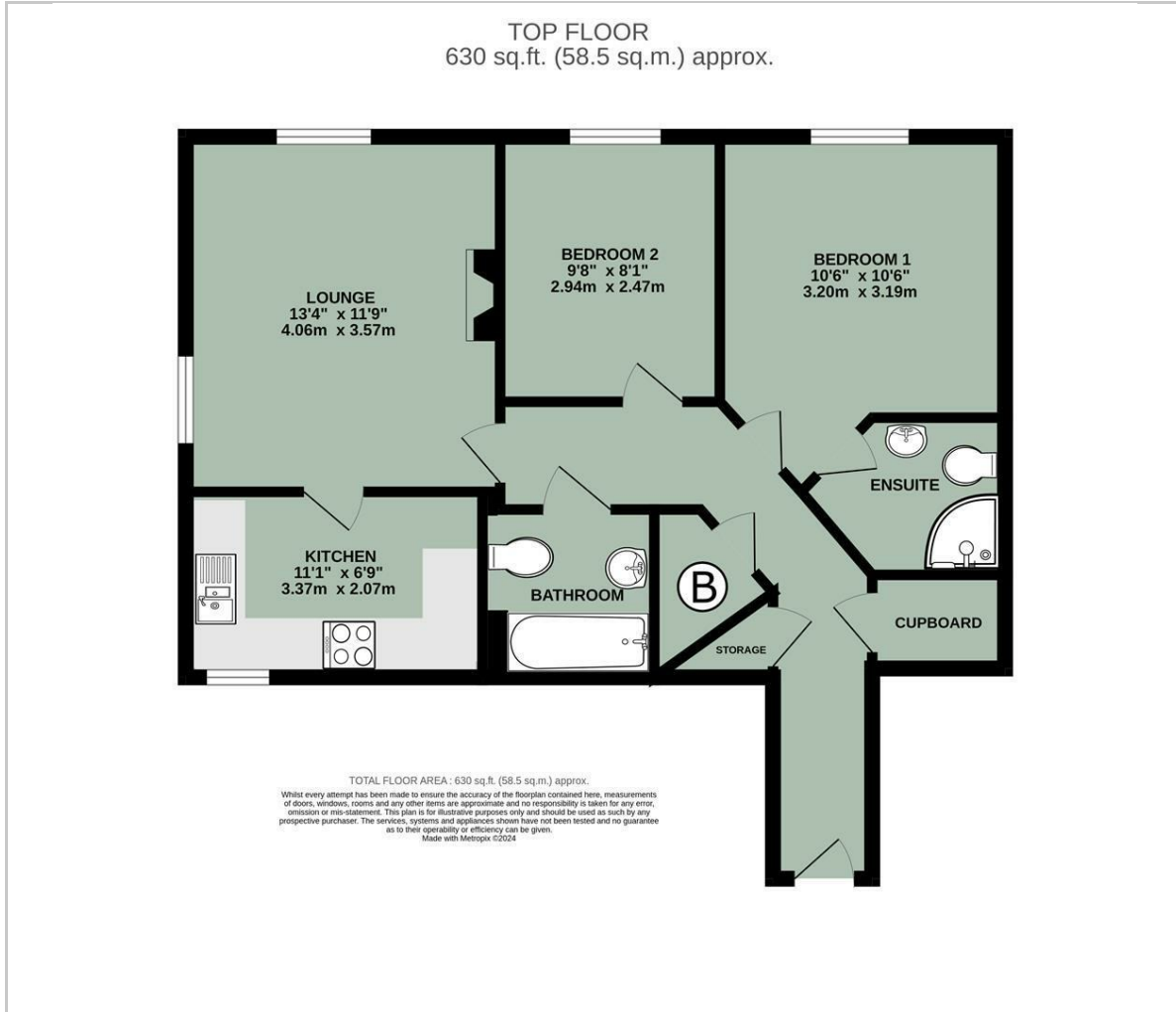


- WELL-PRESENTED TOP FLOOR APARTMENT
- EN-SUITE TO THE MAIN BEDROOM
- AMPLE BUILT-IN STORAGE
- GENEROUS DUAL ASPECT LOUNGE
- ALLOCATED OFF-STREET PARKING & VISITOR SPACES
- TWO BEDROOMS
- FITTED KITCHEN WITH WATER SOFTENER
- WALKING DISTANCE TO TOWN CENTRE AND GREEN SPACE
- COMMUNAL GARDENS
- FREE STANDING APPLIANCES & WINDOW DRESSINGS INCLUDED



Energy Efficiency Graph

## Floor Plan



## Area Map



## Viewing

Please contact our In House Sales & Lettings Office on 01491 839999 opt.1 if you wish to arrange a viewing appointment for this property or require further information.

These particulars, whilst believed to be accurate are set out as a general outline only for guidance and do not constitute any part of an offer or contract. Intending purchasers should not rely on them as statements of representation of fact, but must satisfy themselves by inspection or otherwise as to their accuracy. No person in this firm's employment has the authority to make or give any representation or warranty in respect of the property.

28 St Martins Street, Wallingford, Oxfordshire, OX10 0AL  
Tel: 01491 839999 opt.1 Email: [sales@inhouseestateagents.co.uk](mailto:sales@inhouseestateagents.co.uk) [www.inhouseestateagents.co.uk](http://www.inhouseestateagents.co.uk)