

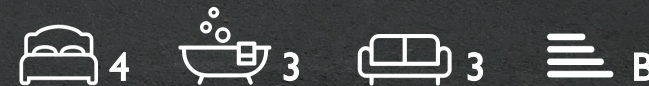
WE VALUE



YOUR HOME



Triggs mead, Benson  
Asking Price £625,000





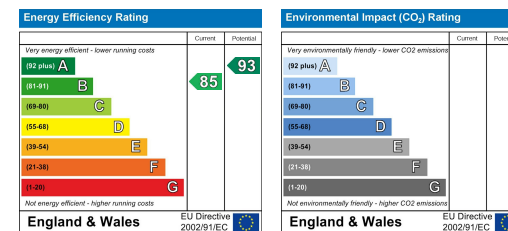
If you love clean, modern and spacious living, this stylish and immaculately presented, detached family home could be your dream come true! Located within the Cala development, 'The Nenhurst' features a stunning kitchen/diner opening out to the larger than average, south-west facing rear garden, a beautiful bay-fronted lounge, a study, separate utility and cloakroom to the downstairs space, and to the first floor, two double bedrooms both with en-suites and built-in double wardrobes plus a family bathroom and two further bedrooms. With off-street parking and a garage, all just a short stroll from Benson's many amenities and countryside walks, if you are bursting at the seams and need a home where space and storage isn't an issue, this beautiful four-bedroom property can't fail to impress!





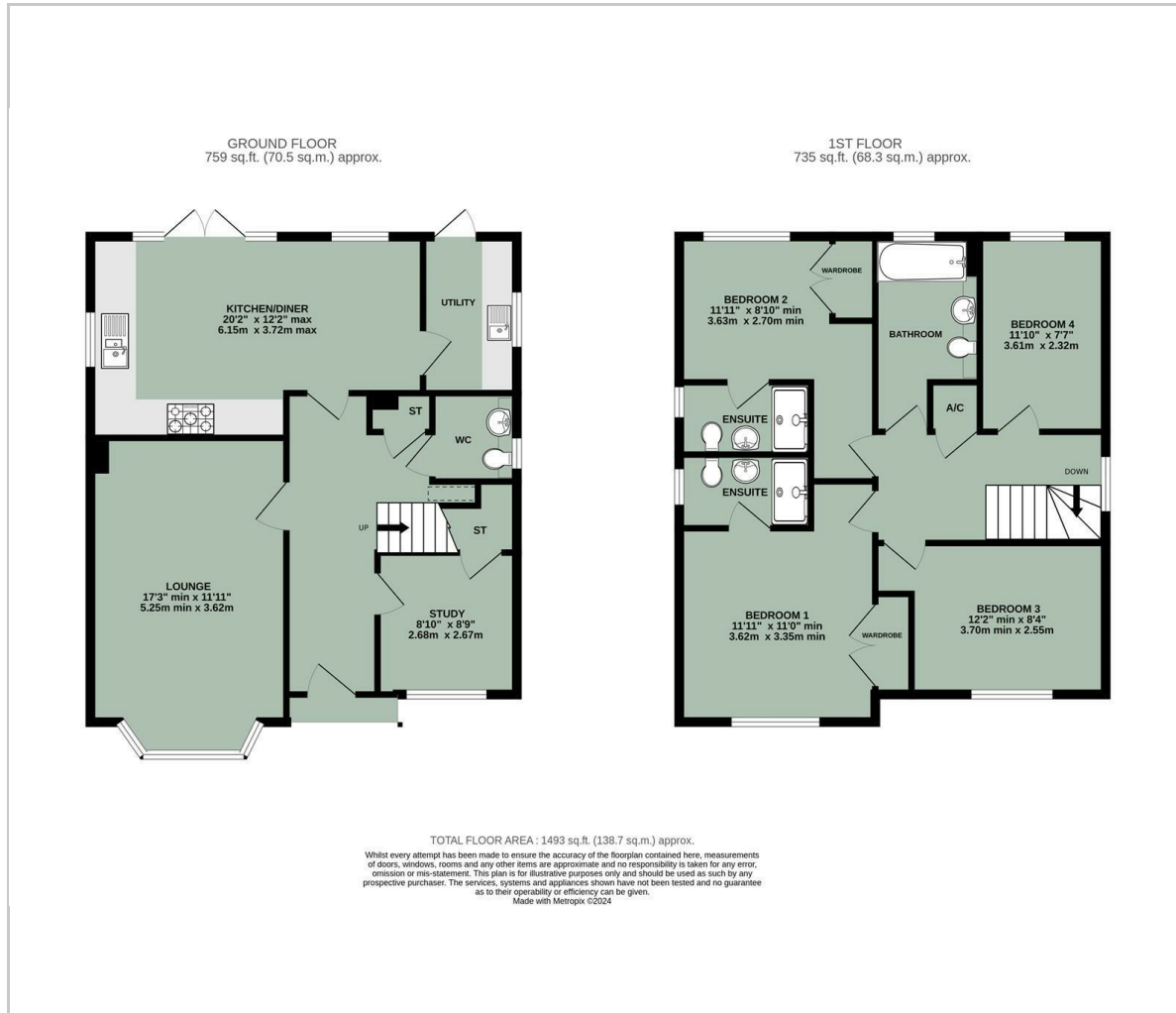


- NO ONWARD CHAIN
- DETACHED FOUR BEDROOM FAMILY HOME
- 20FT OPEN PLAN KITCHEN/DINER
- STUDY, UTILITY & CLOAKROOM
- TWO EN-SUITES & FAMILY BATHROOM
- GENEROUS SOUTH-WEST FACING REAR GARDEN
- GARAGE & OFF-STREET PARKING
- IMMACULATELY PRESENTED THROUGHOUT



Energy Efficiency Graph

## Floor Plan



## Area Map



## Viewing

Please contact our In House Sales & Lettings Office on 01491 839999 opt.1 if you wish to arrange a viewing appointment for this property or require further information.

These particulars, whilst believed to be accurate are set out as a general outline only for guidance and do not constitute any part of an offer or contract. Intending purchasers should not rely on them as statements of representation of fact, but must satisfy themselves by inspection or otherwise as to their accuracy. No person in this firm's employment has the authority to make or give any representation or warranty in respect of the property.

28 St Martins Street, Wallingford, Oxfordshire, OX10 0AL

Tel: 01491 839999 opt.1 Email: [sales@inhouseestateagents.co.uk](mailto:sales@inhouseestateagents.co.uk) [www.inhouseestateagents.co.uk](http://www.inhouseestateagents.co.uk)