

WE VALUE



YOUR HOME



Westfield Road, Benson
£360,000

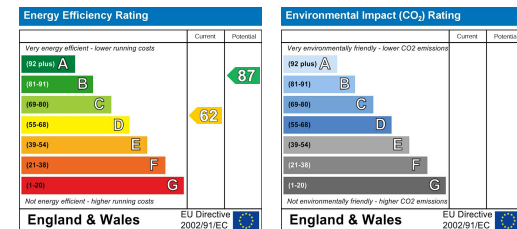


Located within a popular area of Benson, this three-bedroom property benefits from a sunny south-west facing rear garden, a good sized lounge and kitchen/diner and three bedrooms - one that can be repurposed into a study if required, off-street parking for three vehicles on the property's driveway and a garage! With scope to modernize and put your own stamp on it, if you are looking for a home close to all the village amenities in a family-friendly area, this one is worth a look!



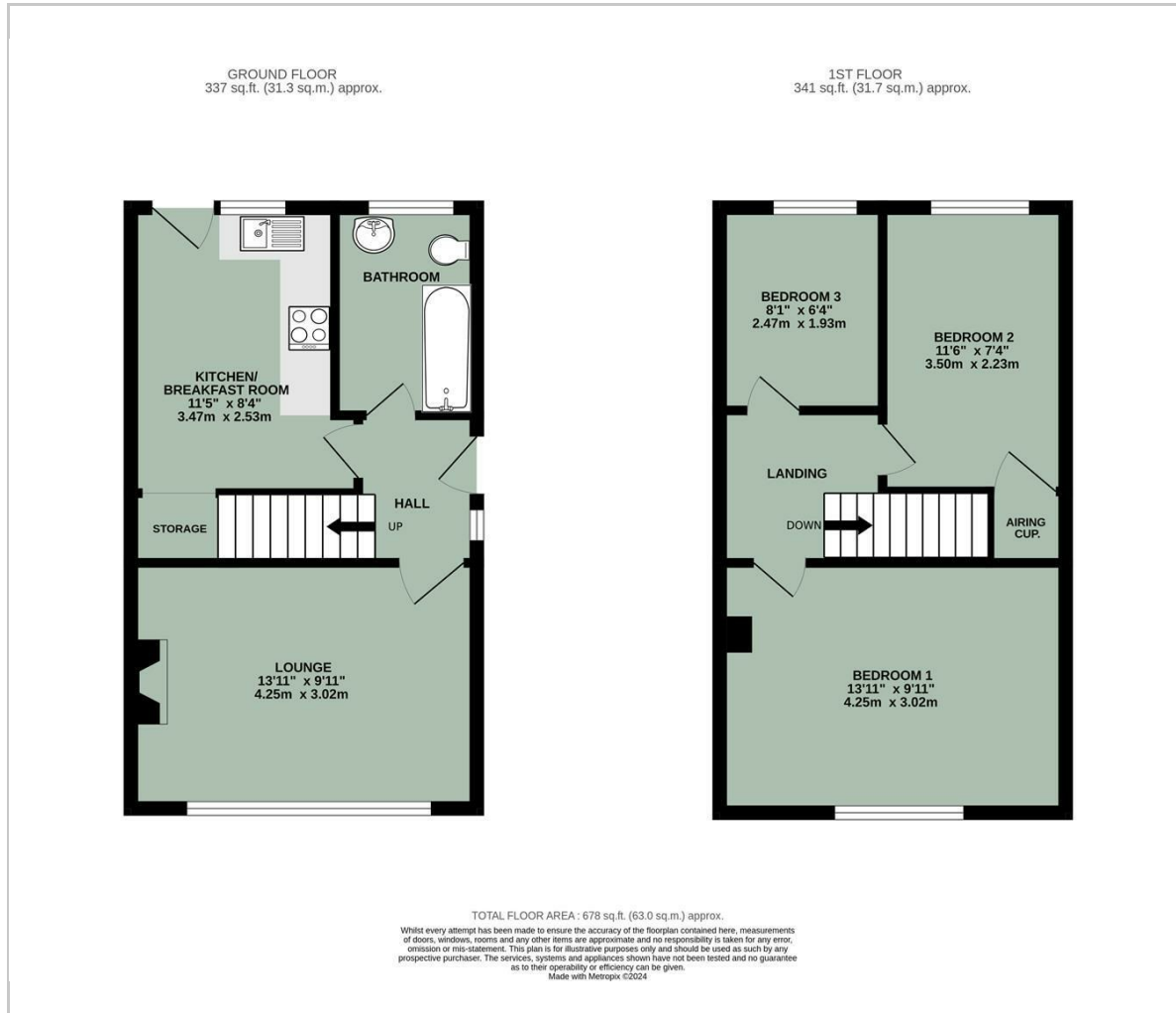


- POPULAR VILLAGE LOCATION
- THREE-BEDROOMS
- SOUTH-WEST FACING REAR GARDEN
- OFF-STREET PARKING FOR THREE VEHICLES
- GARAGE
- CLOSE TO VILLAGE AMENITIES
- SCOPE TO MODERNIZE



Energy Efficiency Graph

Floor Plan



Area Map



Viewing

Please contact our In House Sales & Lettings Office on 01491 839999 opt.1 if you wish to arrange a viewing appointment for this property or require further information.

These particulars, whilst believed to be accurate are set out as a general outline only for guidance and do not constitute any part of an offer or contract. Intending purchasers should not rely on them as statements of representation of fact, but must satisfy themselves by inspection or otherwise as to their accuracy. No person in this firm's employment has the authority to make or give any representation or warranty in respect of the property.

28 St Martins Street, Wallingford, Oxfordshire, OX10 0AL
Tel: 01491 839999 opt.1 Email: sales@inhouseestateagents.co.uk www.inhouseestateagents.co.uk