

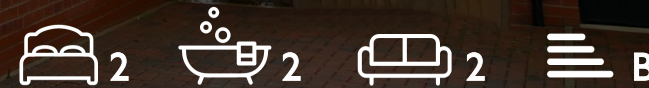
WE VALUE



YOUR HOME



King Close, Chalgrove  
Asking Price £350,000

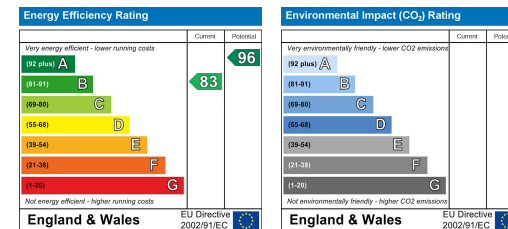


Only two years old, this immaculately presented two-bedroom house with its modern and stylish interior has a lovely homely feel and a wealth of great features including a south-facing rear garden making it perfect for those who love a sunny outdoor space and off-street parking for two vehicles. With a spacious lounge and kitchen/diner, a utility and cloakroom, and to the upstairs, two double bedrooms with an en-suite to the master and a family bathroom. If you are looking for a home you can move straight into without the need of redecorating or renovating, this stylish property could be the perfect find!



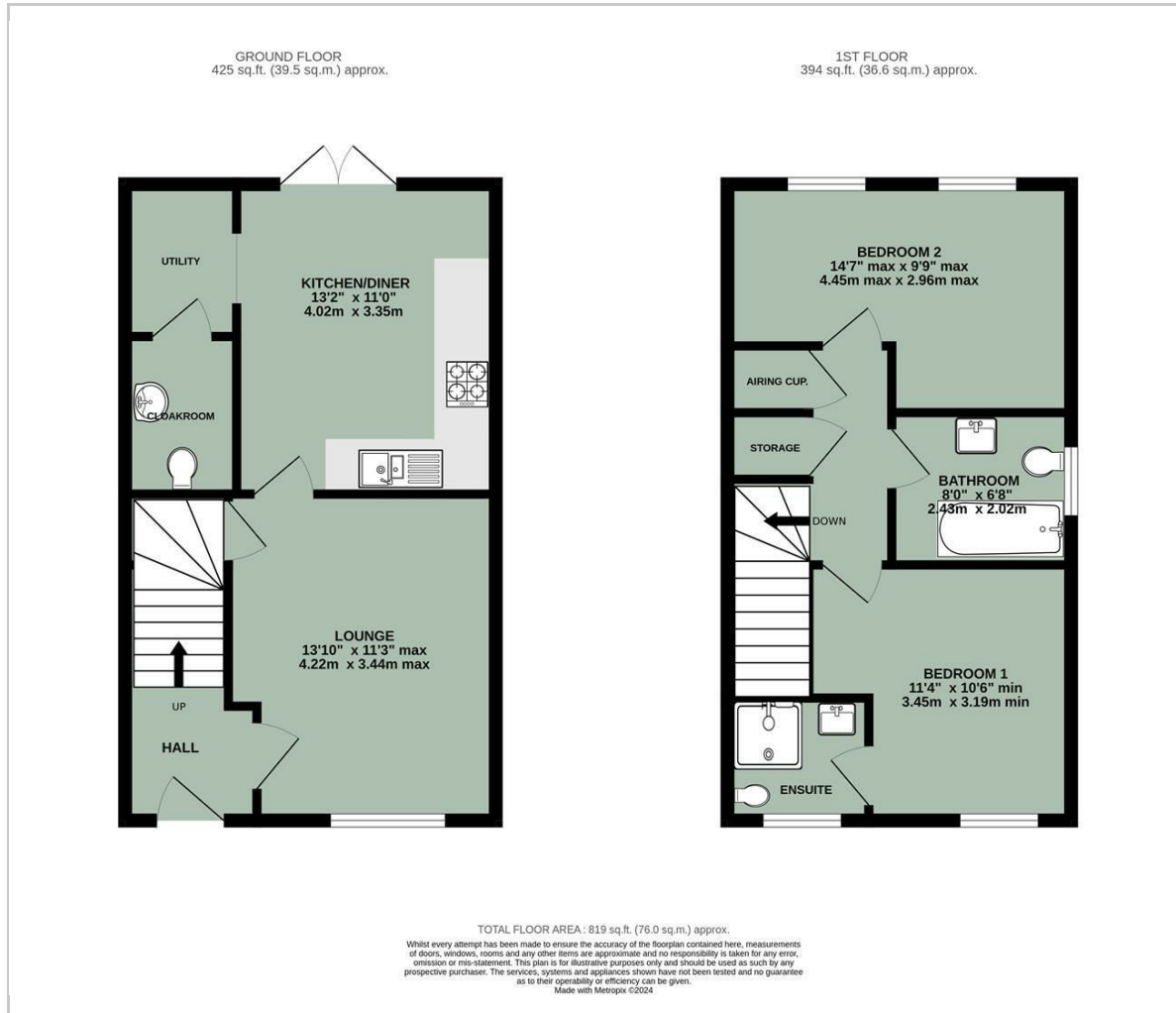


- IMMACULATLY PRESENTED MODERN PROPERTY
- SPACIOUS LOUNGE & KITCHEN DINER
- STYLISLY DECORATED THROUGHOUT
- UTILITY & CLOAKROOM
- TWO DOUBLE BEDROOMS
- EN-SUITE TO THE MAIN BEDROOM
- SOUTH-FACING REAR GARDEN
- OFF-STREET PARKING FOR TWO VEHICLES

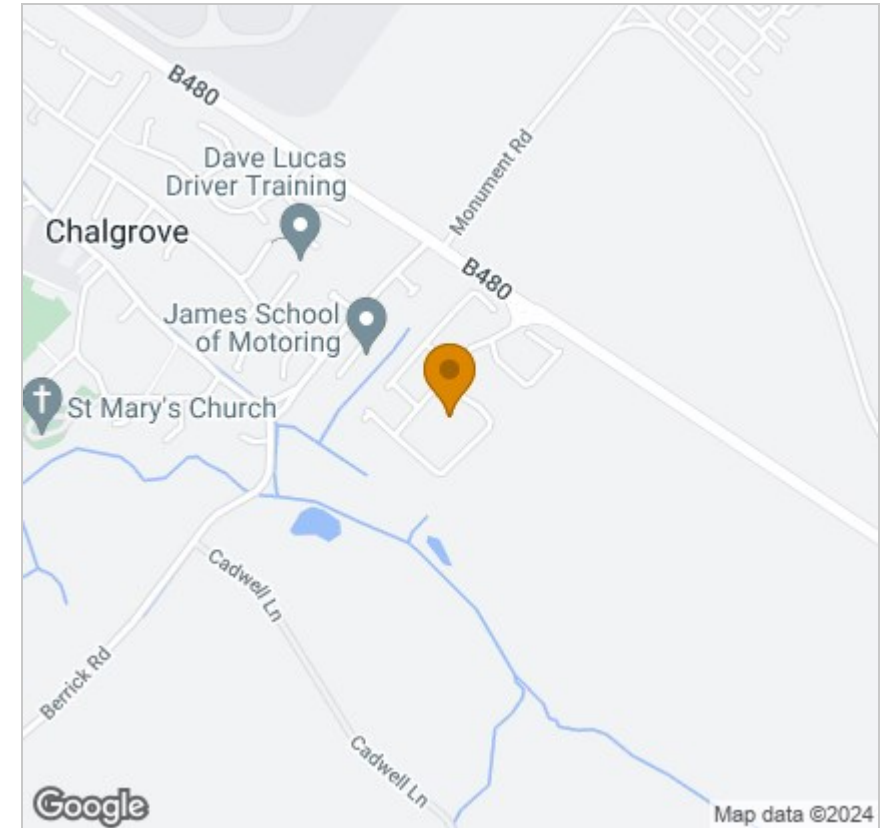


Energy Efficiency Graph

## Floor Plan



## Area Map



## Viewing

Please contact our In House Sales & Lettings Office on 01491 839999 opt.1 if you wish to arrange a viewing appointment for this property or require further information.

These particulars, whilst believed to be accurate are set out as a general outline only for guidance and do not constitute any part of an offer or contract. Intending purchasers should not rely on them as statements of representation of fact, but must satisfy themselves by inspection or otherwise as to their accuracy. No person in this firm's employment has the authority to make or give any representation or warranty in respect of the property.

28 St Martins Street, Wallingford, Oxfordshire, OX10 0AL  
Tel: 01491 839999 opt.1 Email: [sales@inhouseestateagents.co.uk](mailto:sales@inhouseestateagents.co.uk) [www.inhouseestateagents.co.uk](http://www.inhouseestateagents.co.uk)