

WE VALUE



YOUR HOME



DIAMOND DRIVE, DIDCOT
Asking Price £220,000

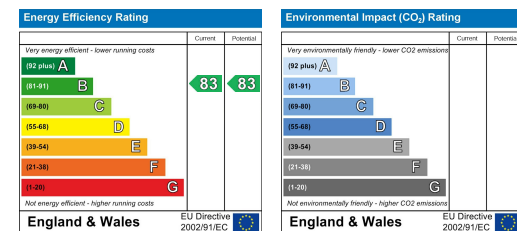


This stylish and well-presented, upper floor apartment features an en-suite to the master bedroom, a light and spacious open-plan kitchen and living space including doors opening to the balcony. With integrated appliances, secure access, allocated parking and located close to transport links and amenities, this modern apartment is coming to the market with no onward chain making it a very appealing first time home or investment property. WHAT THE OWNER SAYS..."The apartment has a lovely south-facing balcony with views of Oxfordshire, its just a short walk from the North Wessex Downs area of outstanding natural beauty. Inside the apartment, the main thing that drew me to it was the significant amount of storage space, especially in the kitchen!"



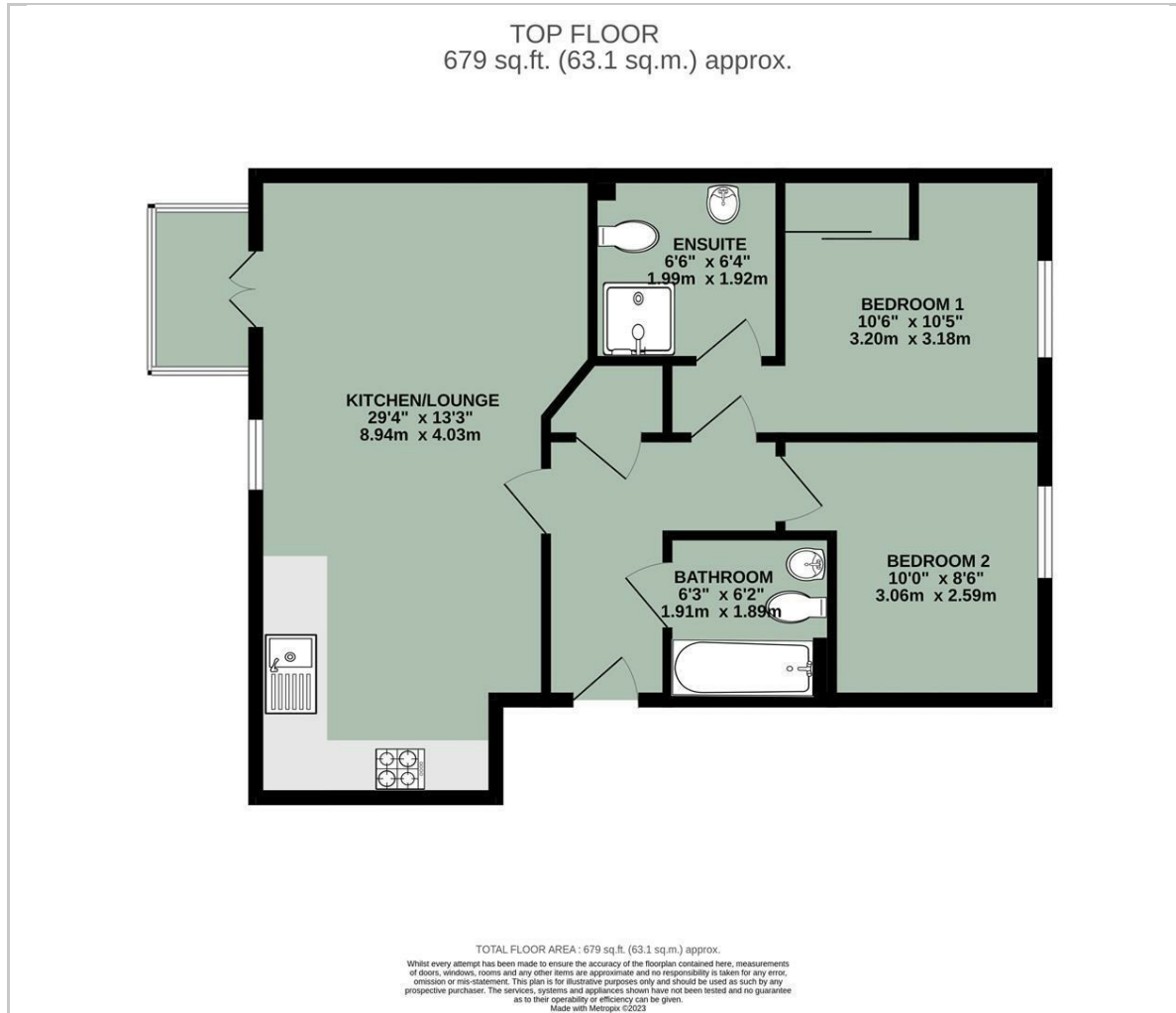


- NO ONWARD CHAIN
- WELL-PRESENTED THROUGHOUT
- EN-SUITE TO MASTER BEDROOM
- OPEN PLAN LIVING SPACE WITH BALCONY
- TWO DOUBLE BEDROOMS
- ALLOCATED PARKING
- INTEGRAL KITCHEN APPLIANCES



Energy Efficiency Graph

Floor Plan



Area Map



Viewing

Please contact our In House Sales & Lettings Office on 01491 839999 opt.1 if you wish to arrange a viewing appointment for this property or require further information.

These particulars, whilst believed to be accurate are set out as a general outline only for guidance and do not constitute any part of an offer or contract. Intending purchasers should not rely on them as statements of representation of fact, but must satisfy themselves by inspection or otherwise as to their accuracy. No person in this firm's employment has the authority to make or give any representation or warranty in respect of the property.

28 St Martins Street, Wallingford, Oxfordshire, OX10 0AL
Tel: 01491 839999 opt.1 Email: sales@inhouseestateagents.co.uk www.inhouseestateagents.co.uk