

WE VALUE



YOUR HOME



Thame Road, Warborough
£750,000

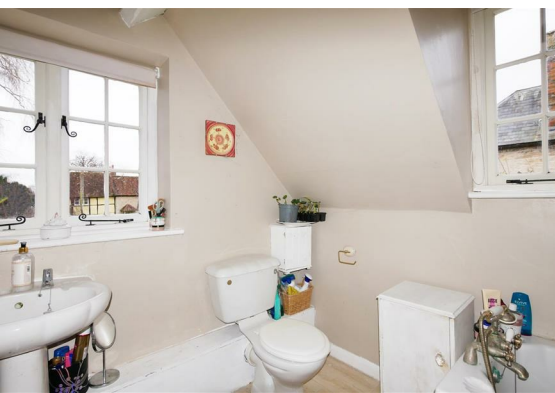


Welcome to 'Quarr Cottage'... Believed to date back to the 1640's, this Grade II listed character property retains many of its original period features from the Inglenook fireplace creating a striking centre piece to the lounge to the timber beams throughout. Located just a stones throw from the village green, this picturesque cottage comes with plenty of living space, four bedrooms, both front and rear gardens and gated off-street parking. If you love properties from the past but need enough space for all the family and the added option to put a modern twist on the interior if your taste desires, Quarr Cottage offers exactly that!



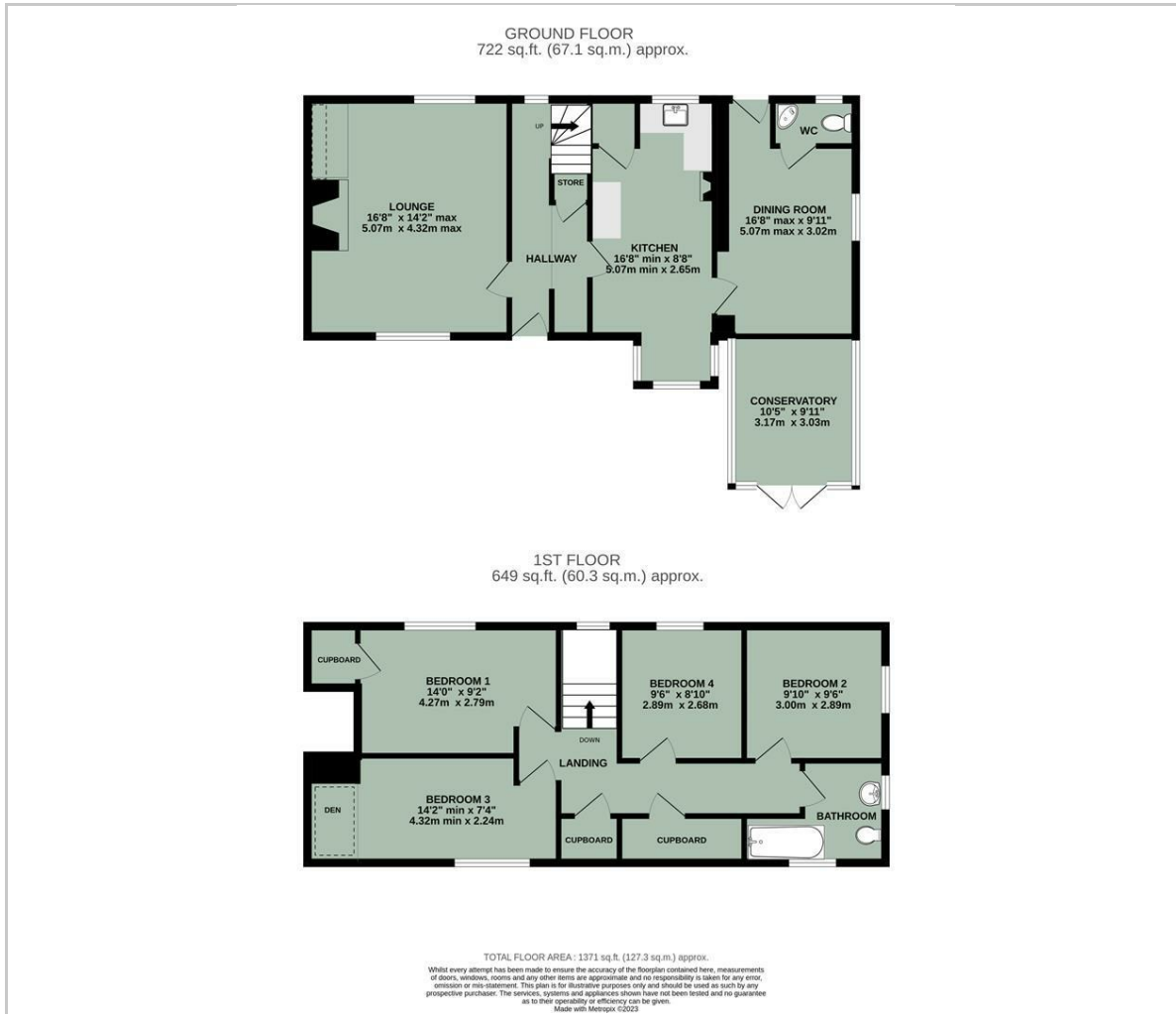


- GRADE II LISTED CHARACTER COTTAGE
- FOUR BEDROOMS
- PERIOD FEATURES INC. INGLENOOK FIREPLACE
- THREE RECEPTION ROOMS INC. CONSERVATORY
- OFF-STREET PARKING
- KITCHEN/BREAKFAST ROOM WITH WOOD BURNER
- CLOSE TO THE VILLAGE GREEN & PRIMARY SCHOOL
- FRONT AND REAR GARDENS



Energy Efficiency Graph

Floor Plan



Area Map



Viewing

Please contact our In House Sales & Lettings Office on 01491 839999 opt.1
if you wish to arrange a viewing appointment for this property or require further information.

These particulars, whilst believed to be accurate are set out as a general outline only for guidance and do not constitute any part of an offer or contract. Intending purchasers should not rely on them as statements of representation of fact, but must satisfy themselves by inspection or otherwise as to their accuracy. No person in this firm's employment has the authority to make or give any representation or warranty in respect of the property.

28 St Martins Street, Wallingford, Oxfordshire, OX10 0AL
Tel: 01491 839999 opt.1 Email: sales@inhouseestateagents.co.uk www.inhouseestateagents.co.uk