

WE VALUE



YOUR HOME



Fieldside, Long Wittenham
Offers Over £290,000

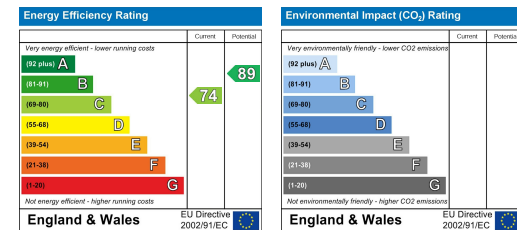


Detached and set back from the road, 'The Lodge' offers a cosy and stylish home arranged over the one floor. With a spacious open plan kitchen/living area opening up to the south-west facing rear garden, underfloor heating throughout, a stylish shower room, two double bedrooms, off-street parking for three vehicles and solar panels, this property is a must-see for first time buyers or downsizers looking for a village property that you can move straight into!



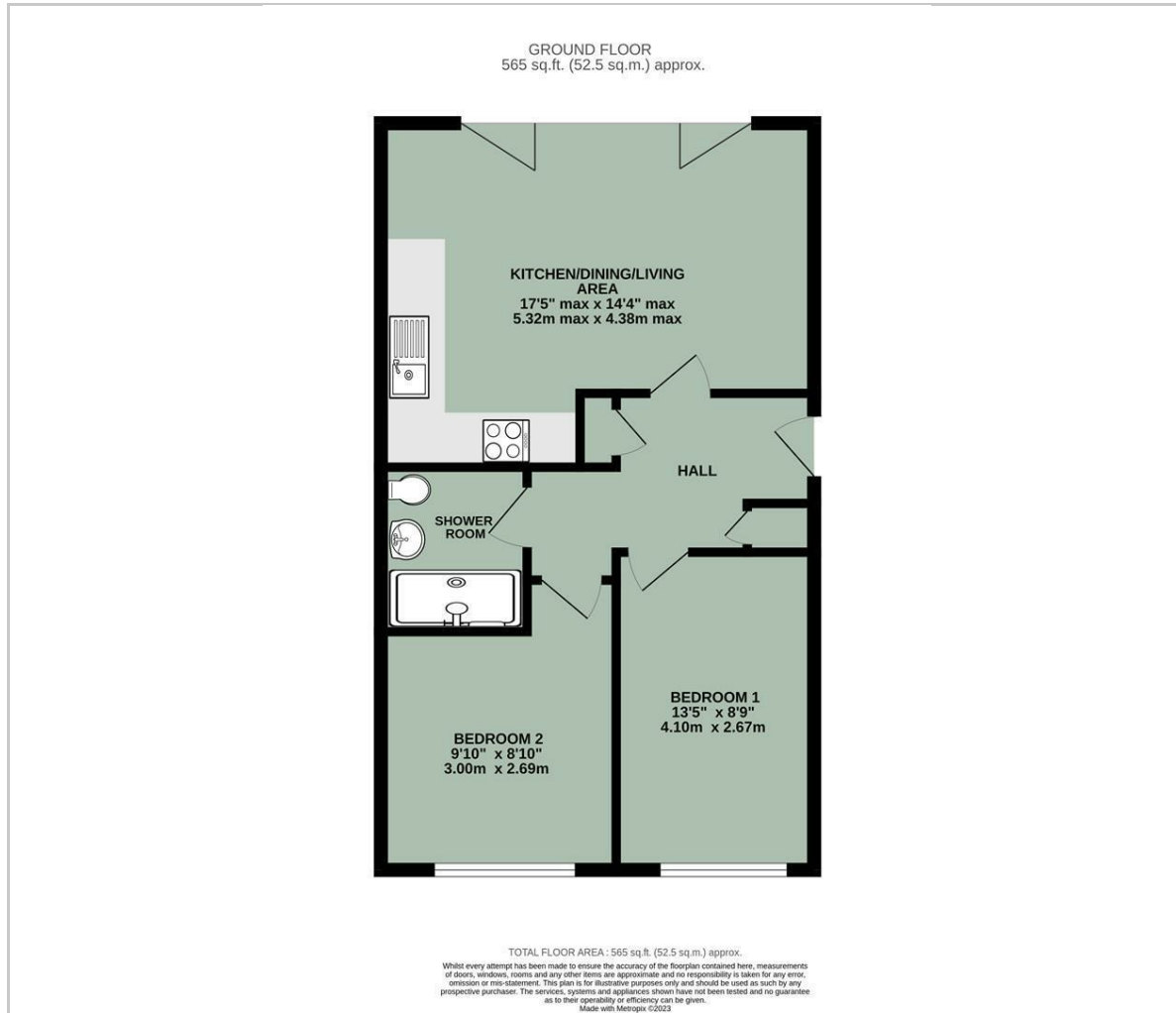


- DETACHED BUNGALOW
- UNDERFLOOR HEATING THROUGHOUT
- OPEN PLAN KITCHEN/LIVING AREA
- SOUTH-WEST FACING REAR GARDEN
- OFF-STREET PARKING FOR THREE VEHICLES
- SOLAR PANELS
- VILLAGE LOCATION



Energy Efficiency Graph

Floor Plan



Area Map



Viewing

Please contact our In House Sales & Lettings Office on 01491 839999 opt.1 if you wish to arrange a viewing appointment for this property or require further information.

These particulars, whilst believed to be accurate are set out as a general outline only for guidance and do not constitute any part of an offer or contract. Intending purchasers should not rely on them as statements of representation of fact, but must satisfy themselves by inspection or otherwise as to their accuracy. No person in this firm's employment has the authority to make or give any representation or warranty in respect of the property.

28 St Martins Street, Wallingford, Oxfordshire, OX10 0AL
Tel: 01491 839999 opt.1 Email: sales@inhouseestateagents.co.uk www.inhouseestateagents.co.uk