

WE VALUE



YOUR HOME



THAME ROAD, WARBOROUGH
Offers Over £450,000



Set back from the road on a good sized plot in the picturesque village of Warborough, this two-bedroom bungalow has plenty of potential to extend (subject to planning permission) thanks to the generous, mature rear garden and frontage. Featuring off-street parking on the private drive and a garage, two reception rooms including a sun room, and two good sized bedrooms offering flexible accommodation. Coming to the market with no onward chain, this property is ideal for those looking for single storey living or wanting to put their own stamp on a property.





In House
We value your home
FOR SALE
01491 839999
www.inhouseagents.co.uk



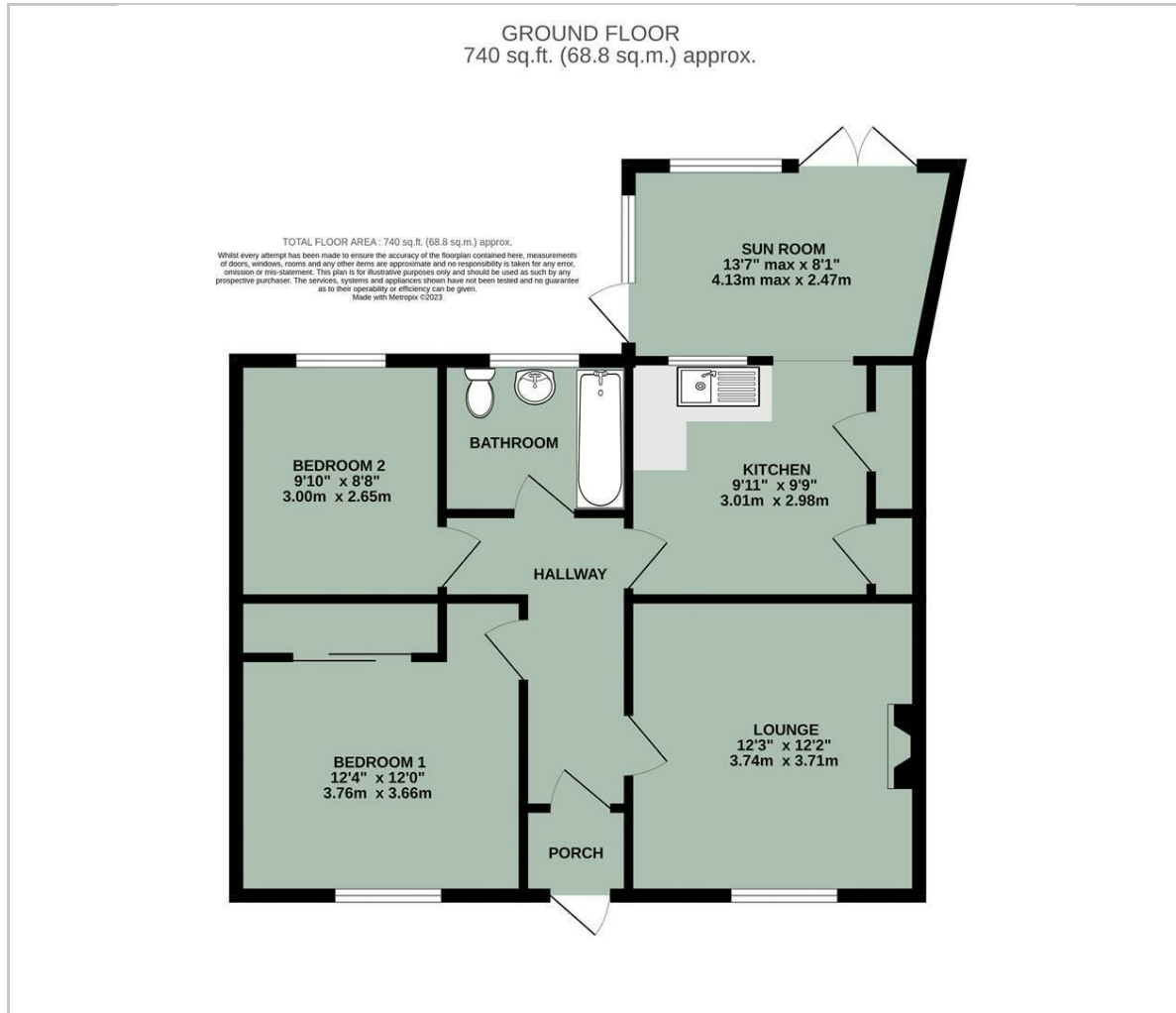
- NO ONWARD CHAIN
- WARBOROUGH VILLAGE
- TWO-BEDROOM BUNGALOW
- GENEROUS PLOT
- OFF-STREET PARKING & GARAGE
- SUN ROOM
- GAS CENTRAL HEATING



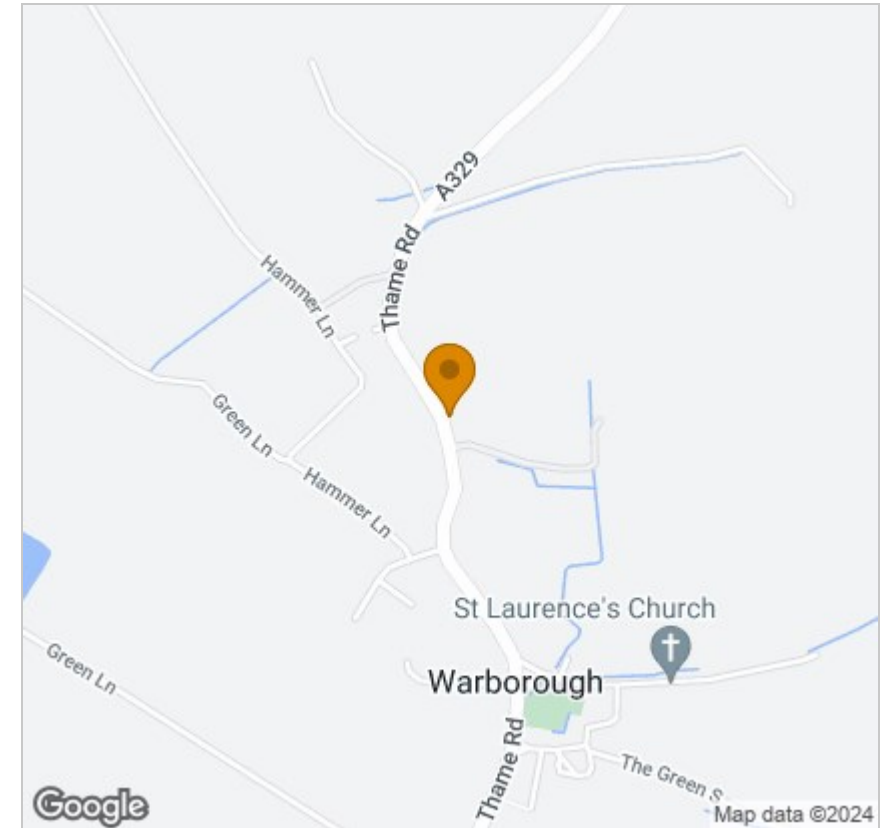
Energy Efficiency Rating		Current	Potential	Environmental Impact (CO ₂) Rating		Current	Potential
Very energy efficient - lower running costs				Very environmentally friendly - lower CO ₂ emissions			
92 plus A				92 plus A			
81-91 B				81-91 B			
69-80 C				69-80 C			
55-68 D				55-68 D			
39-54 E				39-54 E			
21-38 F				21-38 F			
1-20 G				1-20 G			
Not energy efficient - higher running costs				Not environmentally friendly - higher CO ₂ emissions			
England & Wales	EU Directive 2002/91/EC			England & Wales	EU Directive 2002/91/EC		

Energy Efficiency Graph

Floor Plan



Area Map



Viewing

Please contact our In House Sales & Lettings Office on 01491 839999 opt.1
if you wish to arrange a viewing appointment for this property or require further information.

These particulars, whilst believed to be accurate are set out as a general outline only for guidance and do not constitute any part of an offer or contract. Intending purchasers should not rely on them as statements of representation of fact, but must satisfy themselves by inspection or otherwise as to their accuracy. No person in this firm's employment has the authority to make or give any representation or warranty in respect of the property.

28 St Martins Street, Wallingford, Oxfordshire, OX10 0AL
Tel: 01491 839999 opt.1 Email: sales@inhouseestateagents.co.uk www.inhouseestateagents.co.uk