

WE VALUE



YOUR HOME



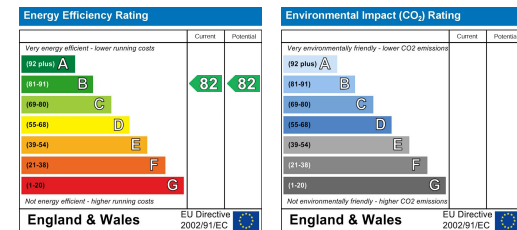
Ramsons Crescent, Didcot  
Asking Price £215,000



Well-presented and neutrally decorated, this spacious and modern first-floor apartment features a 26ft open-plan kitchen & living space with double doors opening to the Juliette balcony, two double bedrooms, a fitted bathroom and allocated off-street parking. Located close to excellent transport links and amenities, this property is ideal for first time buyers and investors alike.

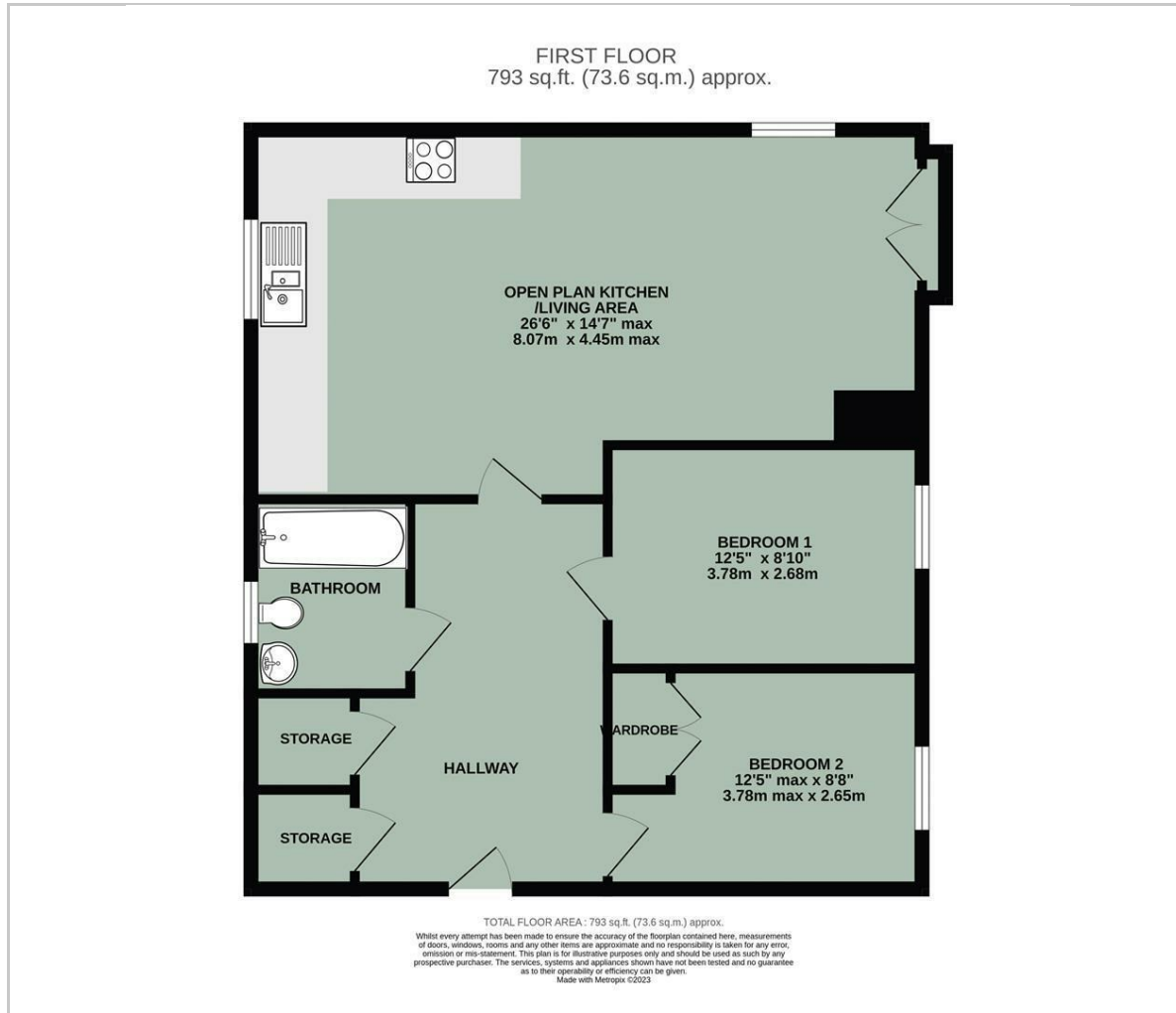


- SPACIOUS FIRST FLOOR APARTMENT
- OPEN-PLAN KITCHEN/LIVING AREA
- JULIETTE BALCONY
- ALLOCATED OFF-STREET PARKING
- TWO DOUBLE BEDROOMS
- FAMILY BATHROOM
- LOCATED CLOSE TO AMENITIES & TRANSPORT LINKS



Energy Efficiency Graph

## Floor Plan



## Area Map



## Viewing

Please contact our In House Sales & Lettings Office on 01491 839999 opt.1 if you wish to arrange a viewing appointment for this property or require further information.

These particulars, whilst believed to be accurate are set out as a general outline only for guidance and do not constitute any part of an offer or contract. Intending purchasers should not rely on them as statements of representation of fact, but must satisfy themselves by inspection or otherwise as to their accuracy. No person in this firms employment has the authority to make or give any representation or warranty in respect of the property.

28 St Martins Street, Wallingford, Oxfordshire, OX10 0AL  
Tel: 01491 839999 opt.1 Email: [sales@inhouseestateagents.co.uk](mailto:sales@inhouseestateagents.co.uk) [www.inhouseestateagents.co.uk](http://www.inhouseestateagents.co.uk)