

WE VALUE



YOUR HOME



BRINKINFIELD ROAD, CHALGROVE
Asking Price £450,000

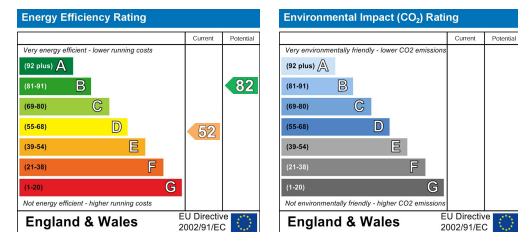


Conveniently located close to excellent commuter links including the M40 and Oxford City Centre, this link-detached family home has a spacious layout and plenty of scope to configure to suit your needs. With three bedrooms including a shower area to the master and a family bathroom to the upstairs, and on the ground floor, a fourth guest bedroom which could easily be repurposed as an office, a generous kitchen/diner, lounge and conservatory opening out to the landscaped rear garden. With off-street parking for three vehicles and a garage/utility, this property is ideal for those looking for a home with a versatile layout, close to the village amenities and within walking distance of the primary school. WHAT THE OWNER SAYS... "It's such a great village with really nice neighbours, we have spent over 13 years here and have enjoyed the easy access to the local amenities and being able to walk to the primary school and shops!"



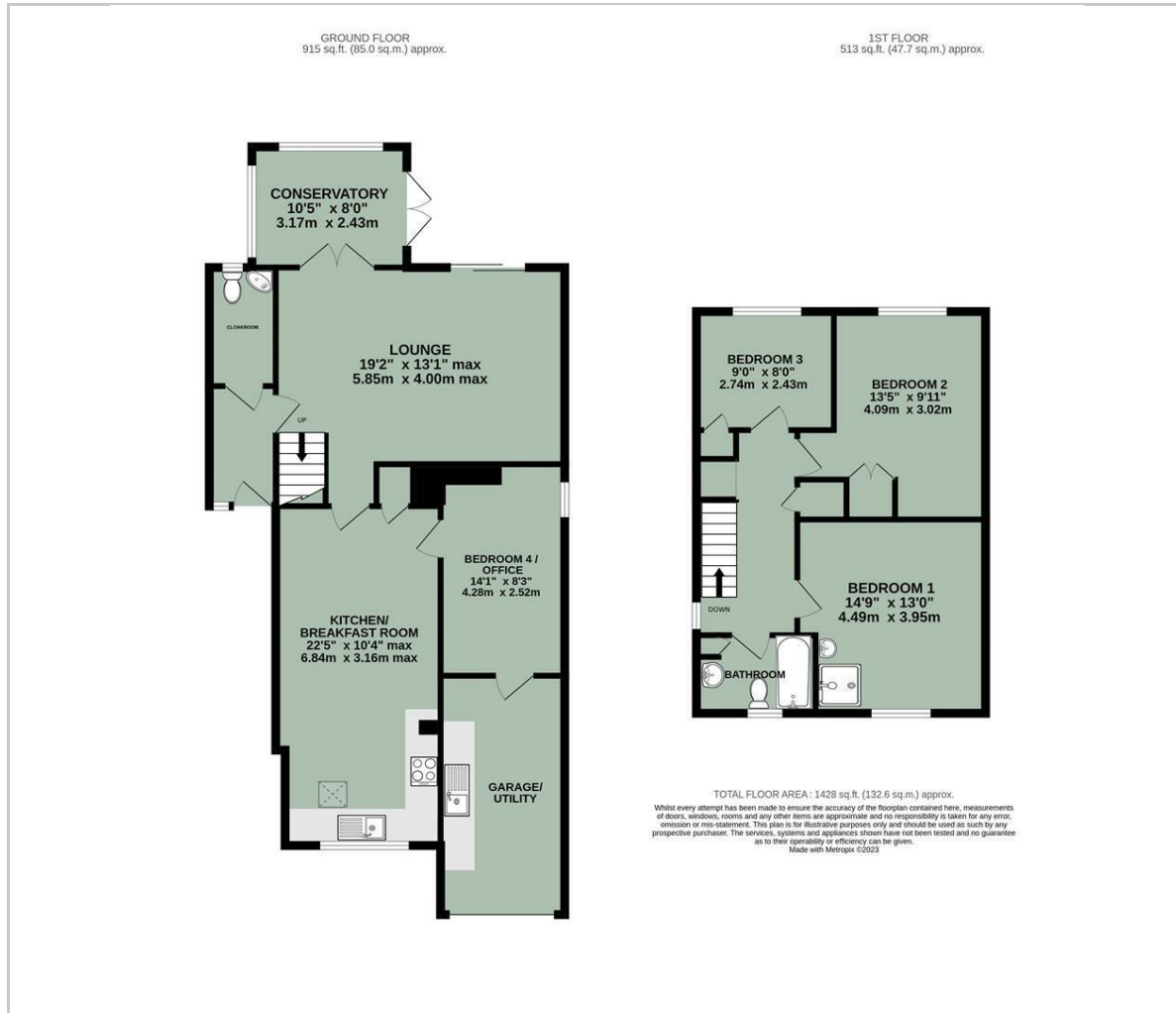


- LINK-DETACHED FAMILY HOME
- VERSATILE LAYOUT
- FOURTH GROUND FLOOR BEDROOM / OFFICE
- MASTER BEDROOM WITH SHOWER AREA
- GENEROUS KITCHEN/BREAKFAST ROOM
- CONSERVATORY
- LANDSCAPED REAR GARDEN
- OFF-STREET PARKING & GARAGE/UTILITY



Energy Efficiency Graph

Floor Plan



Area Map



Viewing

Please contact our In House Sales & Lettings Office on 01491 839999 opt.1 if you wish to arrange a viewing appointment for this property or require further information.

These particulars, whilst believed to be accurate are set out as a general outline only for guidance and do not constitute any part of an offer or contract. Intending purchasers should not rely on them as statements of representation of fact, but must satisfy themselves by inspection or otherwise as to their accuracy. No person in this firm's employment has the authority to make or give any representation or warranty in respect of the property.

28 St Martins Street, Wallingford, Oxfordshire, OX10 0AL
Tel: 01491 839999 opt.1 Email: sales@inhouseestateagents.co.uk www.inhouseestateagents.co.uk