



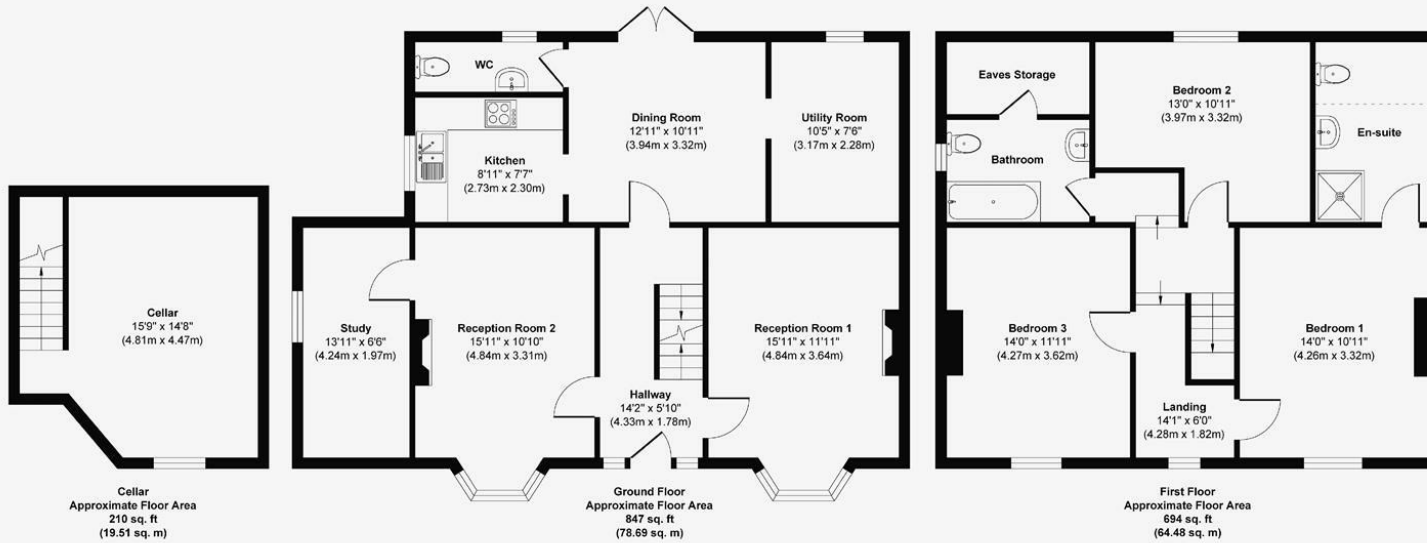
**3 Bed
House - Detached
located in**

Guide Price £650,000



briggs & mortimer
HYBRID

Melbourn Road



Approx. Gross Internal Floor Area 1751 sq. ft / 162.68 sq. m
Illustration for identification purposes only, measurements are approximate, not to scale.

DIRECTIONS

CONTACT

20 Market Hill
Royston
SG89JG

E: sales@briggsandmortimer.co.uk
T: 01763242626
<https://www.briggsandmortimer.co.uk/>

Energy Efficiency Rating		
	Current	Potential
Very energy efficient - lower running costs		
(92 plus) A		
(81-91) B		
(69-80) C		
(55-68) D		
(39-54) E		
(21-38) F		
(1-20) G		
Not energy efficient - higher running costs		
EU Directive 2002/91/EC		
England & Wales		

briggs & mortimer
HYBRID