

Waterman House, 1 Lord Street. Gravesend  
Kent, DA12 1AW  
Sales: 01474 330840  
Email: [info@watermanhouseestates.co.uk](mailto:info@watermanhouseestates.co.uk)  
[www.watermanhouseestates.co.uk](http://www.watermanhouseestates.co.uk)



**Waterman House Estates**



## Castleridge Drive, Greenhithe, DA9 9WT

**£1,595 Per month**

Waterman House Estates are proud to offer this NEW BUILD ground floor 2 BEDROOM APARTMENT on the popular development of St Clements Lake. The property boasts an OPEN PLAN KITCHEN/LIVING ROOM, master bedroom with EN-SUITE, a SPACIOUS SECOND BEDROOM and MODERN FAMILY BATHROOM. The apartment also has its own allocated parking space and secured entry.

This property is within easy access of the A2, M2 and M25. Just a 10-minute walk away is Greenhithe Railway Station, which has train services running into London Charing Cross. Ebbsfleet International Train Station is a 10 minute car journey so you have easy access to high speed rail links to London. Located next to Bluewater Shopping Centre means you have access to hundreds of shops and restaurants.

Council Tax Band - D

Call us now to book a viewing on 01474 330840!



Kitchen/ Living Area

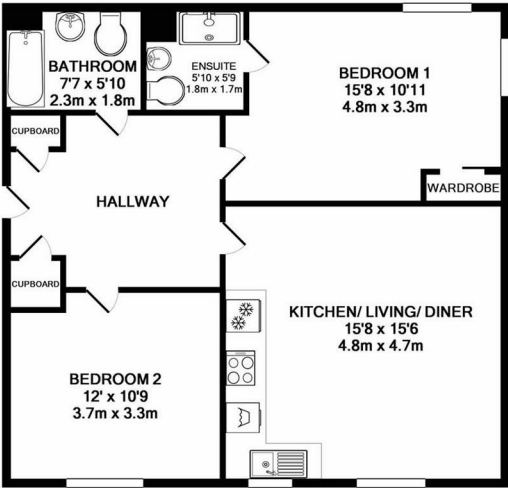
Bedroom 1

Ensuite

Bedroom 2

Bathroom

EXTERNAL



TOTAL APPROX. FLOOR AREA 726 SQ.FT. (67.4 SQ.M.)

Whilst every attempt has been made to ensure the accuracy of the floor plan contained here, measurements of doors, windows, rooms and any other items are approximate and no responsibility is taken for any error, omission, or mis-statement. This plan is for illustrative purposes only and should be used as such by any prospective purchaser. The services, systems and appliances shown have not been tested and no guarantee as to their operability or efficiency can be given

Made with Metropix ©2017

Energy Efficiency Rating		Current	Potential
Very energy efficient - lower running costs			
(92 plus) A			
(81-91) B			
(69-80) C			
(55-68) D			
(39-54) E			
(21-38) F			
(1-20) G			
Not energy efficient - higher running costs			
		83	83

Environmental Impact (CO <sub>2</sub> ) Rating		Current	Potential
Very environmentally friendly - lower CO <sub>2</sub> emissions			
(92 plus) A			
(81-91) B			
(69-80) C			
(55-68) D			
(39-54) E			
(21-38) F			
(1-20) G			
Not environmentally friendly - higher CO <sub>2</sub> emissions			
		91	91

