

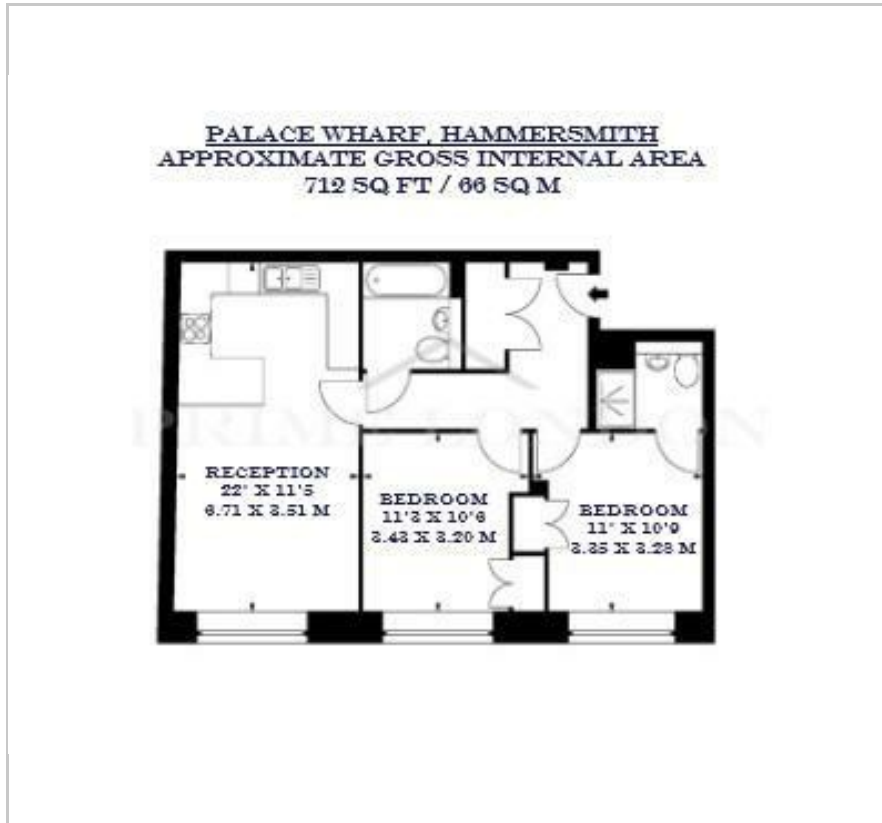
Palace Wharf

Rainville Road, Hammersmith, W6 9UF

£995 Per Week



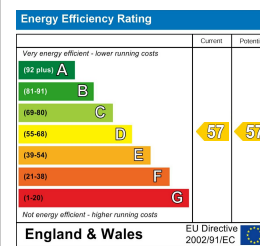
Floor Plan



Area Map



Energy Efficiency Graph



Viewing

By appointment. Contact us on 0207 052 1075 if you wish to arrange a viewing appointment for this property, or require further information.

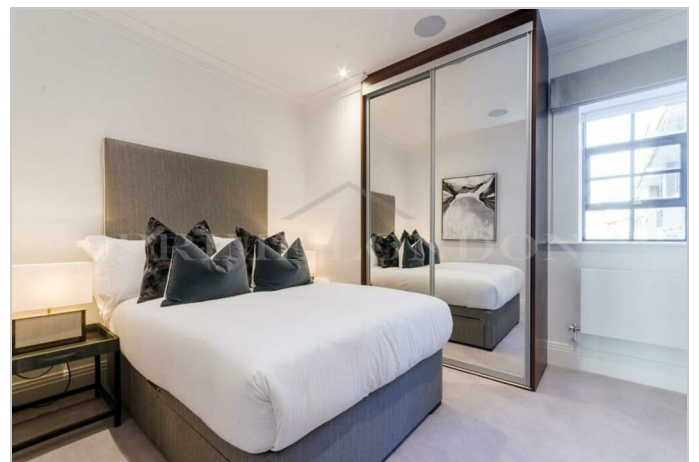
- Two bedroom apartment with 712 sq ft (66 sqm) riverside location
- Benefits include a Crestron audio visual system
- Close proximity to Hammersmith and Baron's Court stations
- Walking distance to local shops and cafes



This bright two bedroom apartment, with the riverside location of Palace Wharf, is available for lease through Prime London.

Totalling 712 sq ft (66 sqm), this property comprises an open plan kitchen and reception area, along with two good size bedrooms, with one being an en-suite. There is also an additional bathroom. The apartment further benefits from a Crestron audio visual system, a digital video door entry system and pre-wiring for Sky + TV.

Palace Wharf is in close proximity to Hammersmith Overground and Underground Station, Barons Court, Putney Bridge and Fulham Broadway Underground Stations. With it's riverside location, Palace Wharf is within walking distance to local shops and cafes.



These particulars, whilst believed to be accurate are set out as a general outline only for guidance and do not constitute any part of an offer or contract. Intending purchasers should not rely on them as statements of representation of fact, but must satisfy themselves by inspection or otherwise as to their accuracy. No person in this firm's employment has the authority to make or give any representation or warranty in respect of the property.